

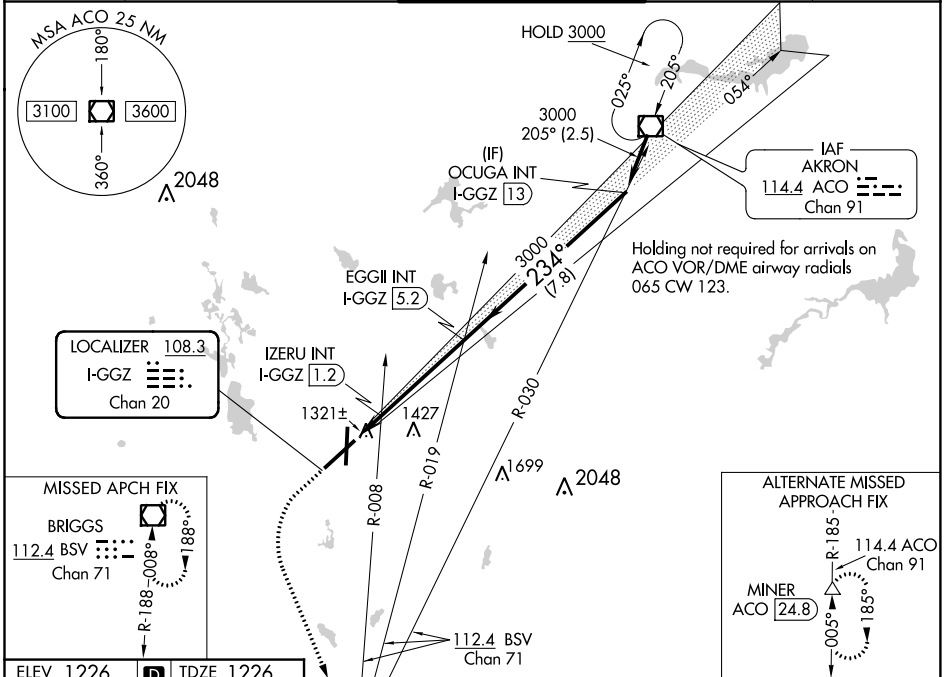
LOC/DME I-GGZ 108.3 Chan 20	APP CRS 234°	Rwy Idg TDZE Apt Elev	8204 1226 1226
--	------------------------	-----------------------------	---

ILS or LOC RWY 23

AKRON-CANTON RGNL (CAK)

MALS R MISSED APPROACH: Climb to 2500 then climbing left turn to 3000 direct BSV VOR/DME and hold.

ATIS 121.05	CLEVELAND APP CON * 125.5 269.25	AKRON-CANTON TOWER 134.75 279.575	GND CON 121.7 348.6	CLNC DEL 132.05
-----------------------	--	---	-------------------------------	---------------------------



ELEV 1226	D	TDZE 1226	2500	3000	BSV	EGGII INT I-GGZ 5.2	OCUGA INT I-GGZ 13
*LOC only		IZERU INT I-GGZ 1.2	3000			Procedure Turn NA	
		I-GGZ DME ANTENNA I-GGZ 0.2	*1700			GS 3.00° TCH 45	
			3000			234°	
			3000				
			1.4 NM		4 NM		7.8 NM

CATEGORY	A	B	C	D
S-ILS 23	**1426/24 200 (200-½)			
S-LOC 23	1700/24	474 (500-½)	1700/50 474 (500-1)	
CIRCLING	1760-1	534 (600-1)	1780-1½ 554 (600-1½)	1800-2 574 (600-2)
IZERU FIX MINIMUMS				
S-LOC 23	1580/24 354 (400-½)		1580/40 354 (400-¾)	
CIRCLING	1760-1	534 (600-1)	1780-1½ 554 (600-1½)	1800-2 574 (600-2)

HIRL Rwys 1-19 and 5-23

FAF to MAP 5.4 NM

Knots	60	90	120	150	180
Min:Sec	5:24	3:36	2:42	2:10	1:48

EC-2, 09 SEP 2021 to 07 OCT 2021

EC-2, 09 SEP 2021 to 07 OCT 2021