

WAAS CH 70420 W01A	APP CRS 009°	Rwy Idg TDZE 1209 Apt Elev 1226	7007
----------------------------------------	------------------------	-----------------------------------------------------	-------------

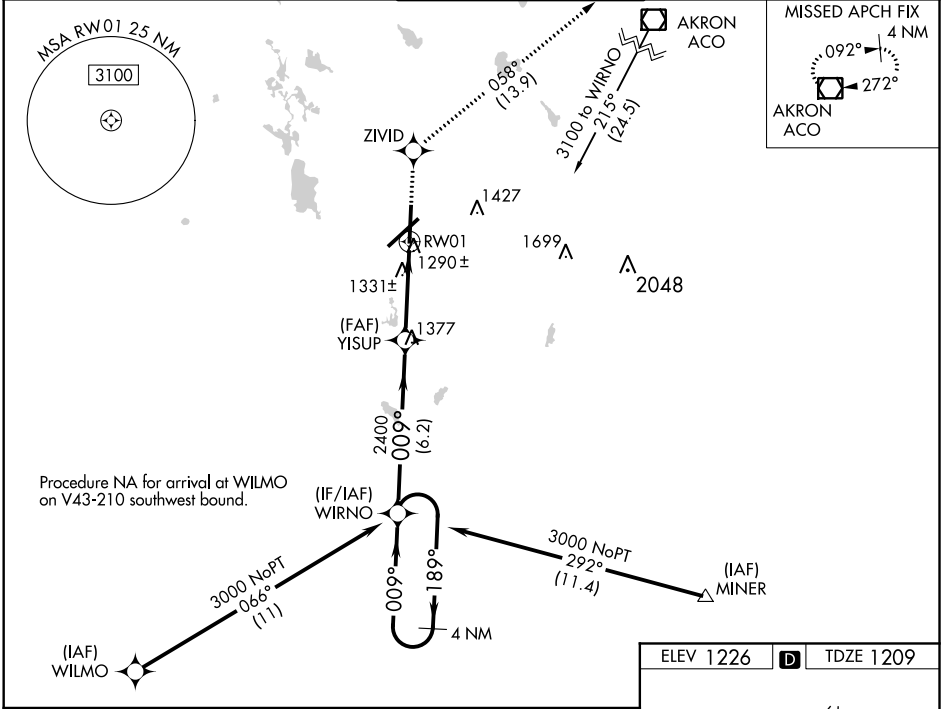
RNAV (GPS) RWY 1

AKRON-CANTON RGNL (CAK)

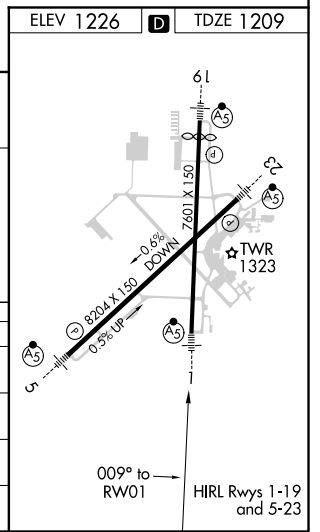
▼ For uncompensated Baro-VNAV systems, LNAV/VNAV NA below -17°C (2°F) or above 45°C (113°F). DME/DME RNP-0.3 NA.
 ** RVR 1800 authorized with use of FD or AP or HUD to DA.

MALSR MISSED APPROACH: Climb to 3000 direct ZIVID and on track 058° to ACO VOR/DME and hold.

ATIS 121.05	CLEVELAND APP CON * 125.5 269.25	AKRON-CANTON TOWER 134.75 279.575	GND CON 121.7 348.6	CLNC DEL 132.05
-----------------------	--------------------------------------------	---------------------------------------------	-------------------------------	---------------------------



4 NM Holding Pattern	WIRNO			
	3000 ← 189°	← 009°	009°	2400
GP 3.00° TCH 53	6.2 NM		2.4 NM	1.1 NM
CATEGORY	A	B	C	D
LPV DA**	1409/24		200 (200-½)	
LNAV/VNAV DA	1542/40		333 (400-¾)	
LNAV MDA	1600/24		391 (400-½)	
CIRCLING	1760-1	534 (600-1)	1780-1½ 554 (600-1½)	1800-2 574 (600-2)



EC-2, 09 SEP 2021 to 07 OCT 2021

EC-2, 09 SEP 2021 to 07 OCT 2021