

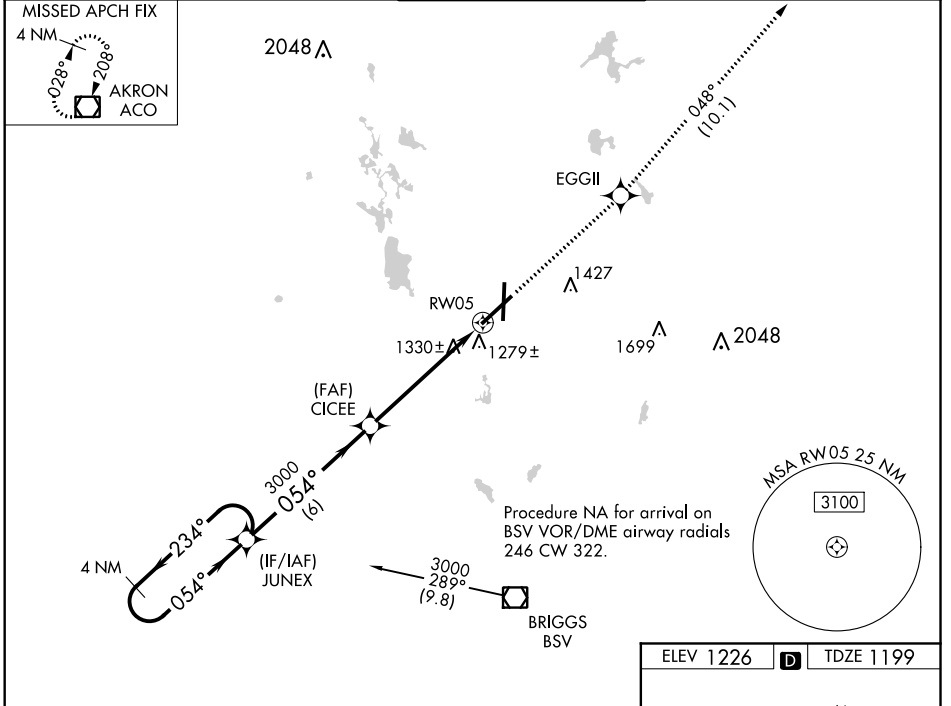
WAAS CH 77620 W05A	APP CRS 054°	Rwy Idg TDZE Apt Elev	8204 1199 1226
--	------------------------	-----------------------------	---

RNAV (GPS) RWY 5

AKRON-CANTON RGNL(CAK)

<p>▼ For uncompensated Baro-VNAV systems, LNAV/VNAV NA below -17°C (2°F) or above 46°C (114°F). DME/DME RNP-0.3 NA. ** RVR 1800 authorized with use of FD or AP or HUD to DA.</p>	<p>MALSR</p>	<p>MISSED APPROACH: Climb to 3000 direct EGGII and on track 048° to ACO VOR/DME and hold.</p>
--	--------------	---

ATIS 121.05	CLEVELAND APP CON * 125.5 269.25	AKRON-CANTON TOWER 134.75 279.575	GND CON 121.7 348.6	CLNC DEL 132.05
-----------------------	--	---	-------------------------------	---------------------------



4 NM Holding Pattern	JUNEX		CICEE		3000	EGGII	tr 048°	ACO
	3000 ← 234°	054° →	054° →	3000	*1.3 NM to RW05	*LNAV only		
GP 3.00° TCH 50	6 NM		4.2 NM	1.3 NM				
CATEGORY	A	B	C	D				
LPV DA**	1399/24		200 (200-½)					
LNAV/VNAV DA	1577/50		378 (400-1)					
LNAV MDA	1640/24	441 (500-½)	1640/40 441 (500-¾)	1640/50 441 (500-1)				
CIRCLING	1760-1	534 (600-1)	1780-1½ 554 (600-1½)	1800-2 574 (600-2)				

