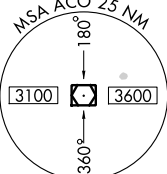
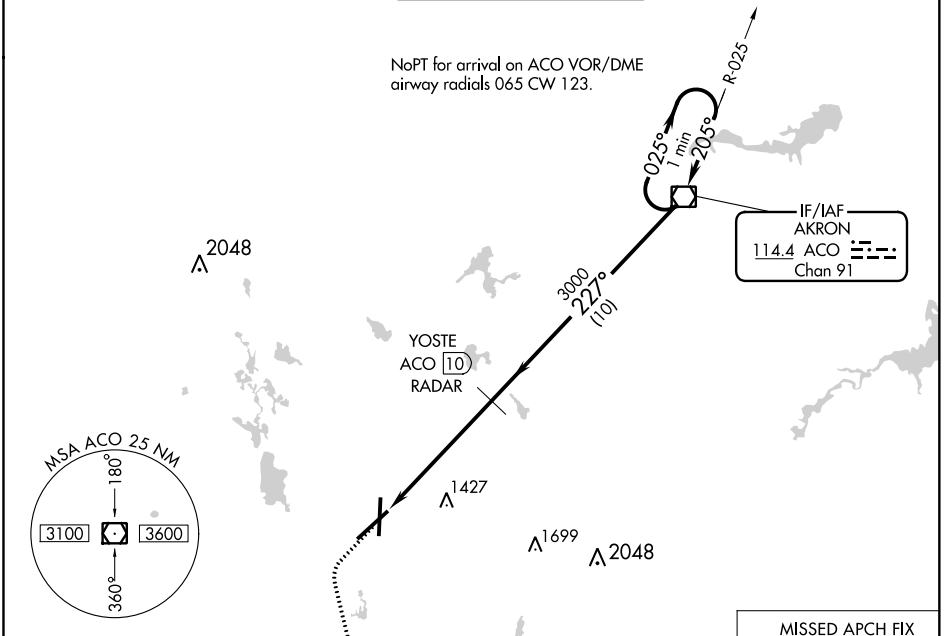


VOR/DME ACO <b>114.4</b> Chan <b>91</b>	APP CRS <b>227°</b>	Rwy Idg TDZE <b>1226</b> Apt Elev <b>1226</b>
---	------------------------	---

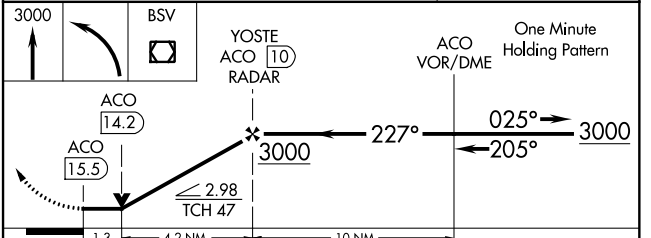
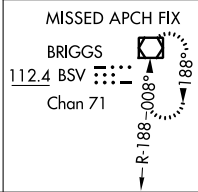
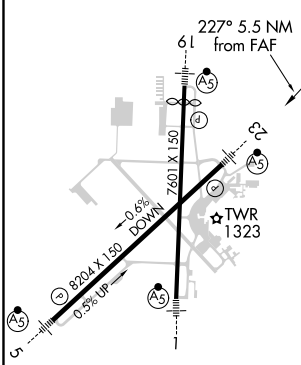
**VOR RWY 23**  
AKRON-CANTON RGNL (CAK)

DME or RADAR required.		MALS	MISSED APPROACH: Climb to 3000 then left turn direct BSV VOR/DME and hold.	
------------------------	--	------	--	--

ATIS <b>121.05</b>	CLEVELAND APP CON * <b>125.5 269.25</b>	AKRON-CANTON TOWER <b>134.75 279.575</b>	GND CON <b>121.7 348.6</b>	CLNC DEL <b>132.05</b>
-----------------------	--	---	-------------------------------	---------------------------



ELEV 1226	<b>D</b>	TDZE 1226
-----------	----------	-----------



HIRL Rws 1-19 and 5-23	FAF to MAP 5.5 NM				
Knots	60	90	120	150	180
Min:Sec	5:30	3:40	2:45	2:12	1:50
CATEGORY	A	B	C	D	
S-23	1680/24	454 (500-½)	1680/40	454 (500-¾)	1680/50
CIRCLING	1760-1	534 (600-1)	1780-1½	554 (600-1½)	1800-2
				574 (600-2)	

EC-2, 09 SEP 2021 to 07 OCT 2021

EC-2, 09 SEP 2021 to 07 OCT 2021