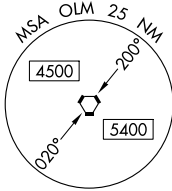


VORTAC OLM 113.4 Chan 81	APP CRS 171°	Rwy Idg TDZE Apt Elev	N/A N/A 208
---------------------------------------	------------------------	-----------------------------	--

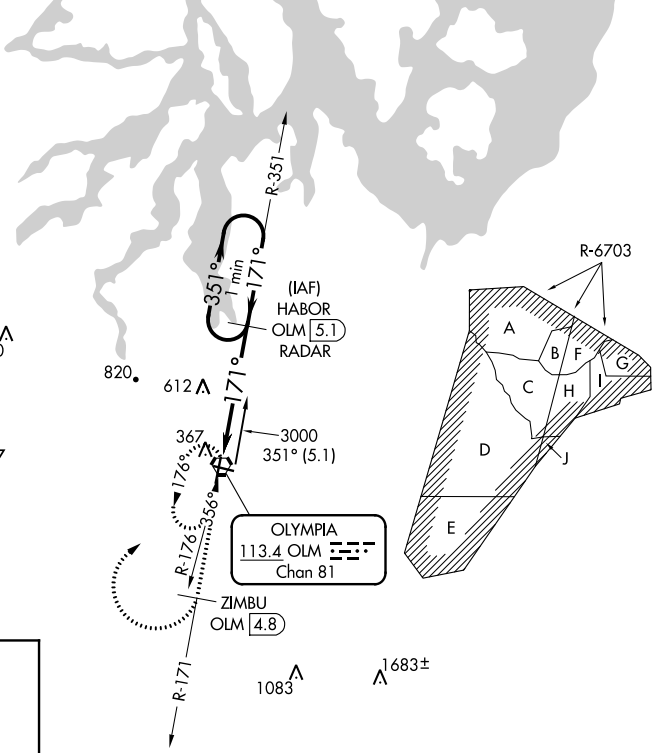
VOR-A
OLYMPIA RGNL (OLM)

⚠ DME required. MISSED APPROACH: Climb to 4200 on OLM VORTAC R-171 to ZIMBU/OLM 4.8 DME and climbing right turn direct OLM VORTAC and hold, continue climb-in-hold to 4200.

ATIS★ 135.725	SEATTLE APP CON 121.1 290.9	OLYMPIA TOWER★ 124.4 (CTAF) 0 254.25	GND CON 121.6	UNICOM 122.95
-------------------------	---------------------------------------	---	-------------------------	-------------------------

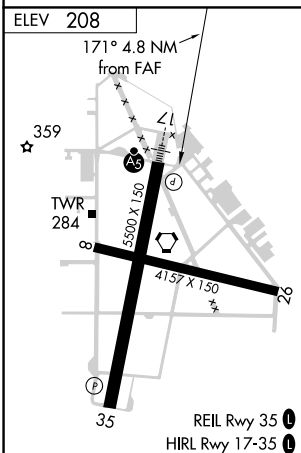


1730 **⚠**
1360 **⚠**
2356
⚠ 3047

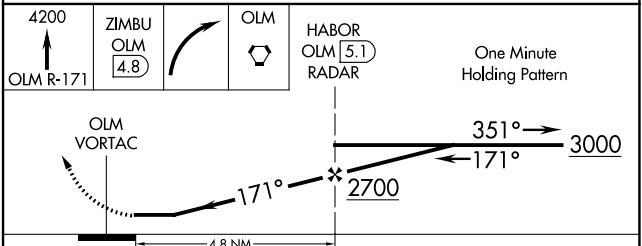


NW-1, 09 SEP 2021 to 07 OCT 2021

NW-1, 09 SEP 2021 to 07 OCT 2021



DME or RADAR REQUIRED



FAF to MAP 4.8 NM					
Knots	60	90	120	150	180
Min:Sec	4:48	3:12	2:24	1:55	1:36
☑ CIRCLING	880-1		672 (700-1)		
	1020-2½		812 (900-2½)		
	1020-2¾		812 (900-2¾)		