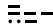


YELM FIVE DEPARTURE

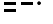
AL-645 (FAA)

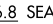
OLYMPIA RGNL (OLM)
OLYMPIA, WASHINGTON

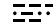
TATOOSH
112.2 TOU 
Chan 59
N48°17.99'-W124°37.62'
L-1, H-1

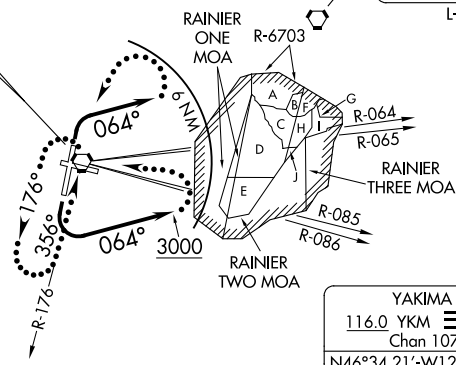
TOP ALTITUDE:
3000

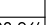
OLYMPIA TOWER*
124.4 (CTAF) 254.25
SEATTLE DEP CON
121.1 290.9


PAINÉ
110.6 PAE 
Chan 43
N47°55.19'-W122°16.67'
L-1, H-1


SEATTLE
116.8 SEA 
Chan 115
N47°26.12'-W122°18.58'
L-1, H-1


OLYMPIA
113.4 OLM 
Chan 81
N46°58.30'-W122°54.11'
L-1, H-1



HOQUIAM
117.7 HQM 
Chan 124
N46°56.82'-W124°08.96'
L-1, H-1

YAKIMA
116.0 YKM 
Chan 107
N46°34.21'-W120°26.68'
L-13, H-1

NEWBERG
117.4 UBG 
Chan 121
N45°21.19'-W122°58.69'
L-1, H-1

BATTLE GROUND
116.6 BTG 
Chan 113
N45°44.87'-W122°35.49'
L-1, H-1

TAKEOFF MINIMUMS

Rwys 8, 26: NA- ATC.

Rwy 17: 300-2 with minimum climb of 210' per NM to 2200 or standard with minimum climb of 720' per NM to 500.

Rwy 35: Standard.

NOTE: RADAR required.

NOTE: Chart not to scale.



DEPARTURE ROUTE DESCRIPTION

TAKEOFF RUNWAY 17: Turn left, climb heading 064° to 3000, thence. . . .

TAKEOFF RUNWAY 35: Turn right, climb heading 064°, maintain 3000 thence. . . .

. . . .for RADAR vectors on course and filed altitude.

LOST COMMUNICATIONS: If no contact with ATC within 6 NM of OLM VORTAC, or 2 minutes after departure for non-DME aircraft, turn left direct OLM VORTAC, continue climb in OLM VORTAC holding pattern to cross OLM VORTAC at or above R-086 CW R-064 4200 feet; R-065 CW R-085 7300 feet, continue climb on assigned route.

YELM FIVE DEPARTURE

NW-1, 09 SEP 2021 to 07 OCT 2021

NW-1, 09 SEP 2021 to 07 OCT 2021