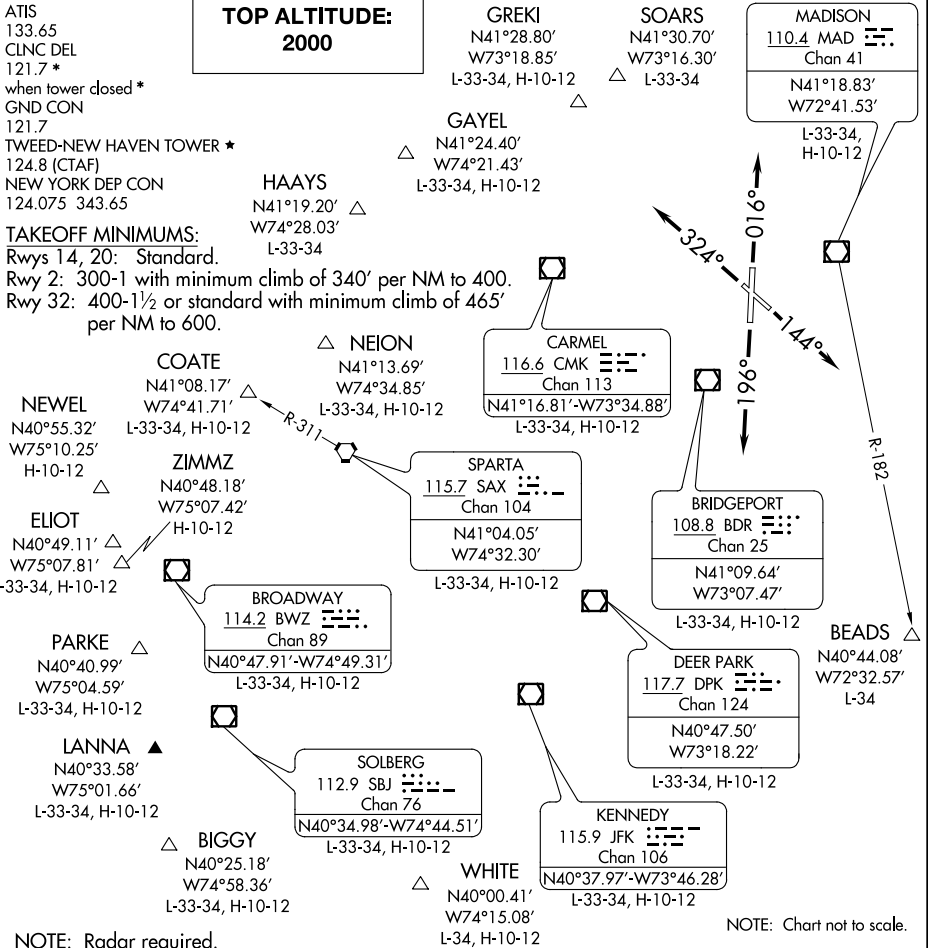


BRIDGEHAVEN NINE DEPARTURE

NEW HAVEN, CONNECTICUT



NE-1, 09 SEP 2021 to 07 OCT 2021

NE-1, 09 SEP 2021 to 07 OCT 2021

- NOTE: Radar required.
- NOTE: BEADS Departures expect vectors to MAD R-182.
- NOTE: COATE Departures expect vectors to SAX/SAX R-311.
- NOTE: ELIOT authorized for all aircraft types but restricted to a final altitude of 14000 or 16000.
- NOTE: NEWEL authorized only for jet aircraft requesting a final altitude of FL180 and above.
- NOTE: ZIMMZ authorized for all aircraft types but restricted to a final altitude of FL180 and above.

DEPARTURE ROUTE DESCRIPTION

TAKEOFF RUNWAY 2: Climb heading 016°, thence. . .

TAKEOFF RUNWAY 14: Climb heading 144°, thence. . .

TAKEOFF RUNWAY 20: Climb heading 196°, thence. . .

TAKEOFF RUNWAY 32: Climb heading 324°, thence. . .

. . . expect vectors to assigned route/fix. Maintain 2000. Expect clearance to filed altitude/flight level within ten (10) minutes after departure.

BRIDGEHAVEN NINE DEPARTURE