

WAAS CH <b>86999</b>	APP CRS <b>016°</b>	Rwy Idg TDZE Apt Elev	<b>5600</b> <b>6</b> <b>12</b>
<b>W02A</b>			

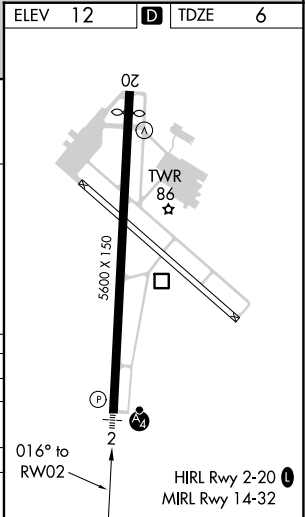
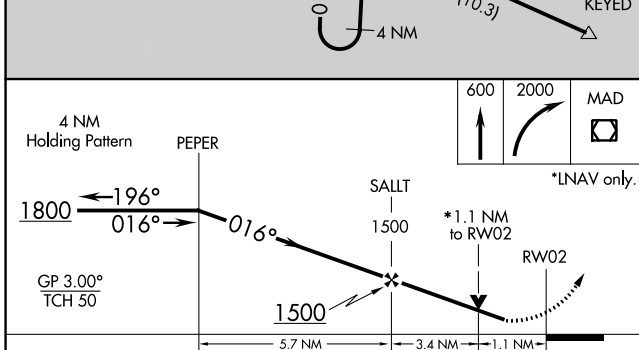
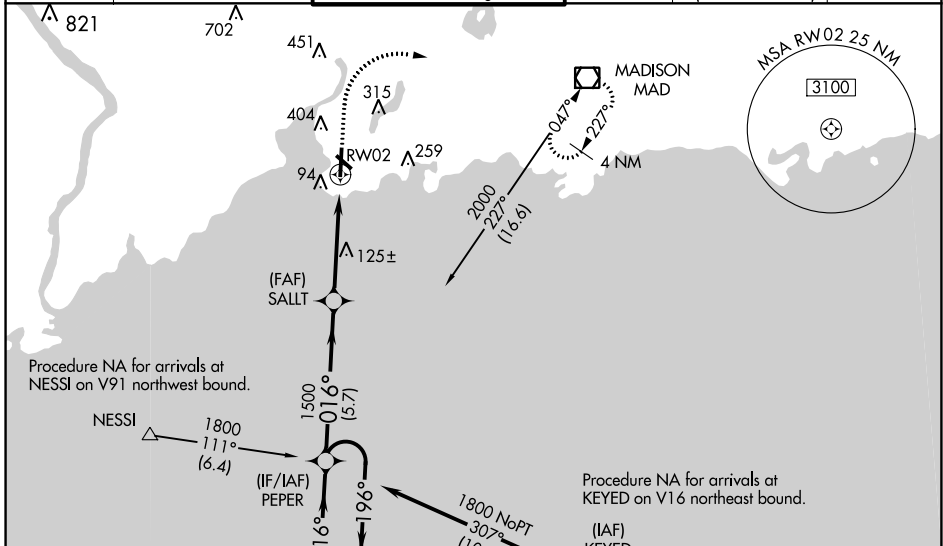
# RNAV (GPS) RWY 2

TWEED-NEW HAVEN (HVN)

**⚠ DME/DME RNP -0.3 NA.** When local altimeter setting not received, use Long Island Mac Arthur altimeter setting; increase LPV all Cats DA to 374 feet and LNAV/VNAV all Cats DA to 415 feet and visibility LPV all Cats to RVR 5000, LNAV/VNAV to RVR 6000; increase all MDAs 100 feet, increase visibility LNAV Cat C and D to RVR 6000, and Circling Cat C to 2½ mile and Cat D to 3 mile. For inop MALSF, increase LPV and LNAV/VNAV all Cats visibility to RVR 5000, LNAV Cats C and Cat D to RVR 6000. For inop MALSF when using Long Island Mac Arthur altimeter setting, increase LPV visibility all Cats to 1¼ miles, increase LNAV/VNAV all Cats, and LNAV Cats C and D visibility to 1½ miles. For uncompensated Baro-VNAV systems, LNAV/VNAV NA below -14°C (7°F) or above 54°C (130°F). Night landing: Rwy 14, 32 NA. Helicopter visibility reduction below RVR 4000 NA. VDP and Baro-VNAV NA with Long Island Mac Arthur altimeter setting.

**MALSF**  
**MISSED APPROACH:**  
Climb to 600 then climbing right turn to 2000 direct MAD VOR/DME and hold.

ATIS <b>133.65</b>	NEW YORK APP CON <b>124.075 343.65</b>	TWEED-NEW HAVEN TOWER ★ <b>124.8 (CTAF) 0</b>	GND CON <b>121.7</b>	CLNC DEL <b>121.7</b> (when twr closed)	UNICOM <b>122.95</b>
-----------------------	---	--	-------------------------	---	-------------------------



CATEGORY	A	B	C	D
LPV DA		293/40	287 (300-¾)	
LNAV/VNAV DA		309/40	303 (300-¾)	
LNAV MDA	400/40	394 (400-¾)	400/45	394 (400-¾)
<b>C</b> CIRCLING	720-1	708 (800-1)	780-2¼ 768 (800-2¼)	880-2¾ 868 (900-2¾)

NE-1, 09 SEP 2021 to 07 OCT 2021

NE-1, 09 SEP 2021 to 07 OCT 2021