

WAAS CH 73040 W02A	APP CRS 024°	Rwy Idg 4649 TDZE 2596 Apt Elev 2596
--	------------------------	---

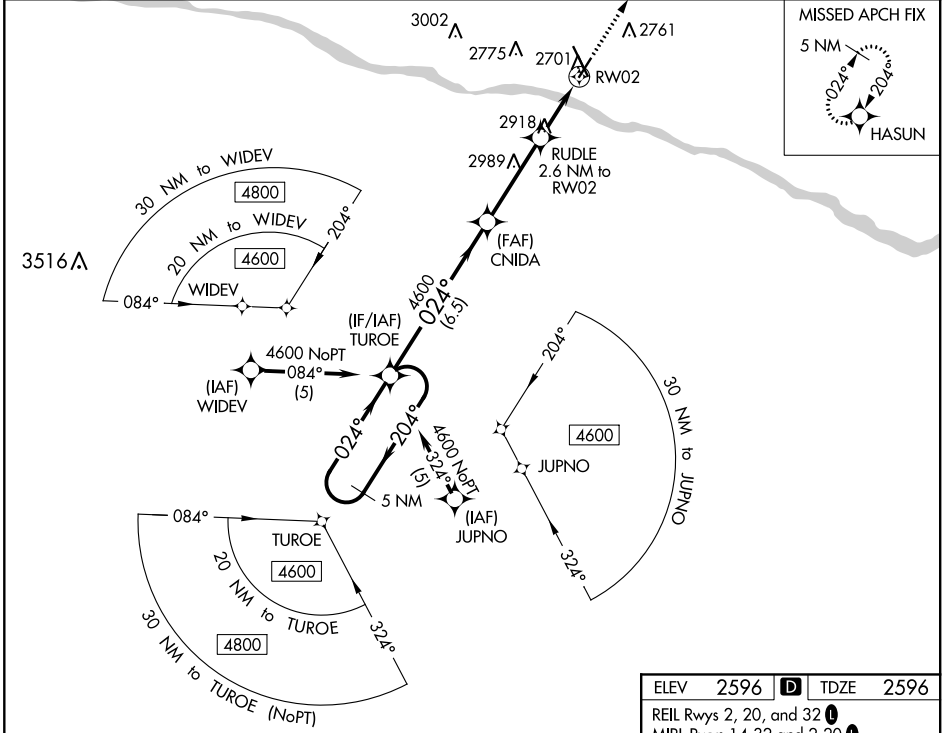
RNAV (GPS) RWY 2

DODGE CITY RGNL (DDC)

For uncompensated Baro-VNAV systems, LNAV/VNAV NA below -9°C (16°F) or above 54°C (130°F). Rwy 2 helicopter visibility reduction below 3/4 SM NA. DME/DME RNP-0.3 NA.

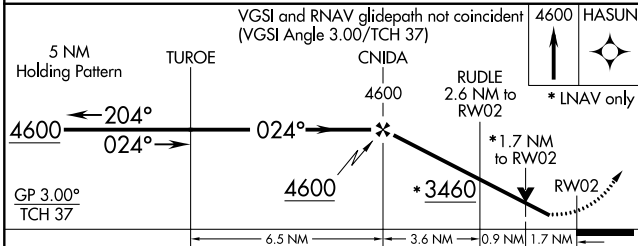
MISSED APPROACH: Climb to 4600 direct HASUN and hold.

ASOS 118.525	KANSAS CITY CENTER 125.2 269.4	UNICOM 122.7 (CTAF) 0
------------------------	--	---------------------------------



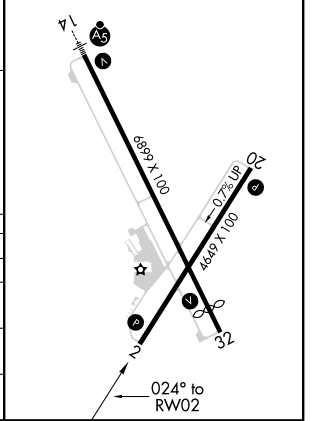
NC-2, 09 SEP 2021 to 07 OCT 2021

NC-2, 09 SEP 2021 to 07 OCT 2021



ELEV	2596	TDZE	2596
------	------	------	------

REIL Rwy 2, 20, and 32
MIRL Rwy 14-32 and 2-20



CATEGORY	A	B	C	D
LPV DA	2846-7/8		250 (300-7/8)	NA
LNAV/VNAV DA	2883-1		287 (300-1)	NA
LNAV MDA	3180-1	584 (600-1)	3180-1 3/4 584 (600-1 3/4)	NA
C CIRCLING	3180-1	584 (600-1)	3320-2 724 (800-2)	NA