

FORT CAMPBELL, KENTUCKY

ILS or LOC RWY 23

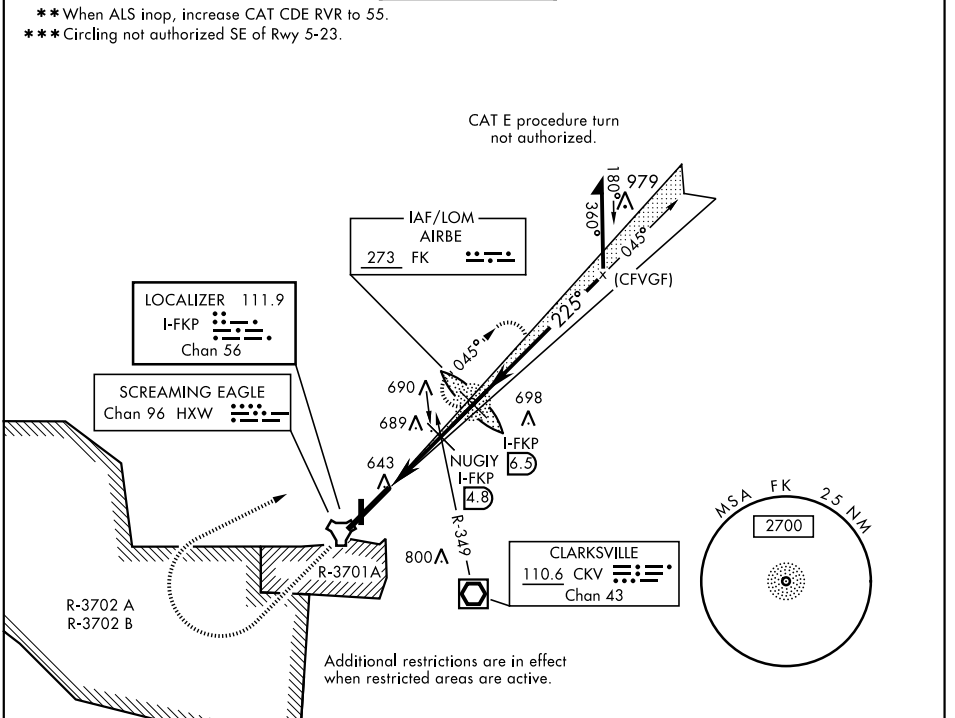
LOC I-FKP 111.9 Chan 56	APCH CRS 225°	Rwy Idg TDZE Arprt Elev 10,926 571 571
---	-------------------------	--

AL-679 [USA]

CAMPBELL AAF (KHOP)

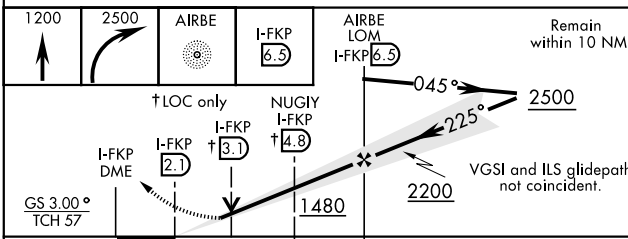
<p>▼ *When ALS inop, increase CAT E RVR to 40. RVR 18 authorized with use of FD or AP or HUD to DA.</p>		<p>MISSED APPROACH: Climb to 1200 then climbing right turn to 2500 direct AIRBE LOM/I-FKP 6.5 DME, continue climb-in-hold to 2500.</p>			
			<p>ATIS 125.175 308.4</p>	<p>CAMPBELL APP CON 118.1 269.525</p>	<p>CAMPBELL TOWER 120.9 278.8</p>

<p>** When ALS inop, increase CAT CDE RVR to 55. *** Circling not authorized SE of Rwy 5-23.</p>
--



RADAR REQUIRED

(for procedure entry)



ELEV 571	TDZE 571
HIRL all Rwy	
FAF to MAP 4.4 NM	
Knots	60 90 120 150 180
Min:Sec	4:24 2:56 2:12 1:46 1:28

FORT CAMPBELL, KENTUCKY
Amdt 13 05DEC19

36° 40' N - 87° 30' W

CAMPBELL AAF (KHOP)

ILS or LOC RWY 23

SE-1, 09 SEP 2021 to 07 OCT 2021

SE-1, 09 SEP 2021 to 07 OCT 2021