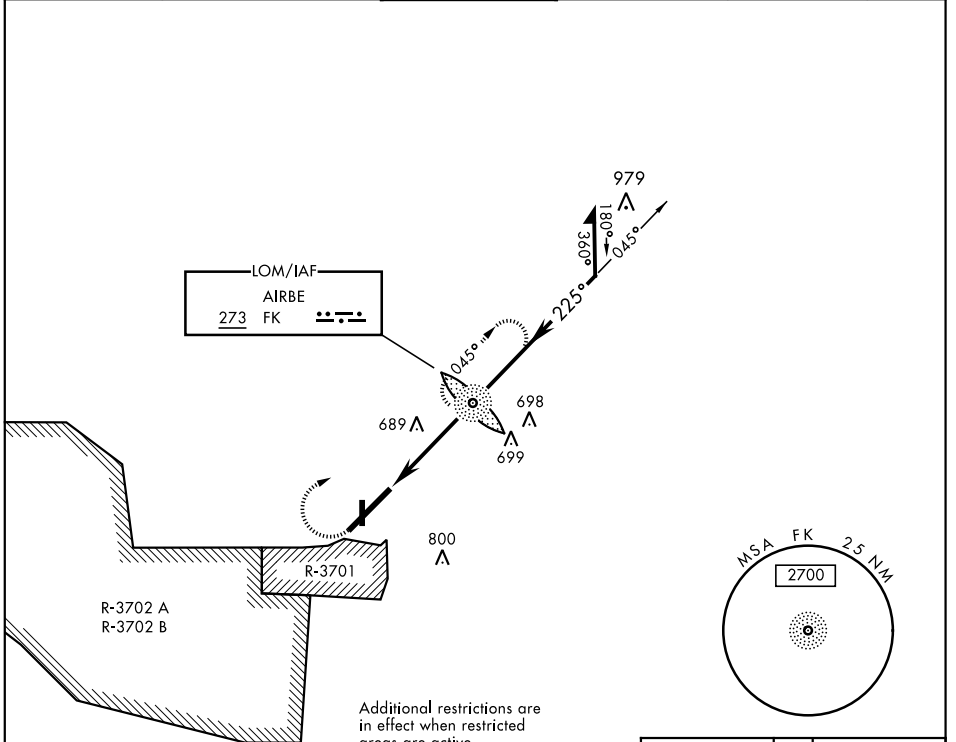


# NDB RWY 23

NDB FK <b>273</b>	APCH CRS <b>225°</b>	Rwy ldg <b>10,926</b> TDZE <b>571</b> Arprt Elev <b>571</b>	AL-679 [USA]	CAMPBELL AAF (KHOP)	
▼ <b>*When ALS inop, increase CAT AB RVR to 50.</b> <b>**Radar not authorized SE of Rwy 5-23.</b>			SSALR <b>(A3)</b>	MISSED APPROACH: Climb to 1200, then climbing right turn to 2500 direct to FK LOM and hold.	
ATIS <b>125.175 308.4</b>	CAMPBELL APP CON <b>118.1 269.525</b>	CAMPBELL TOWER <b>120.9 278.8</b>	GND CON <b>121.8 266.8</b>	CLNC DEL <b>138.8</b>	ASR/PAR

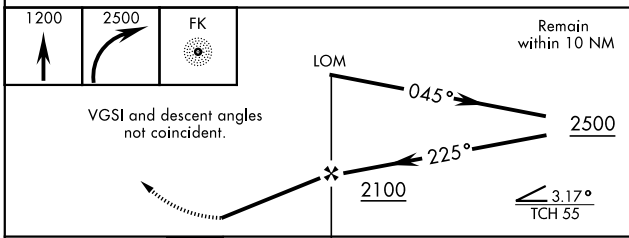


SE-1, 09 SEP 2021 to 07 OCT 2021

SE-1, 09 SEP 2021 to 07 OCT 2021

## RADAR REQUIRED

(for procedure entry)



ELEV 571	TDZE 571
225° 4.4 NM from NDB	
HIRL all Rwy	
FAF to MAP 4.4 NM	
Knots	60 90 120 150 180
Min:Sec	4:24 2:56 2:12 1:46 1:28

# NDB RWY 23