

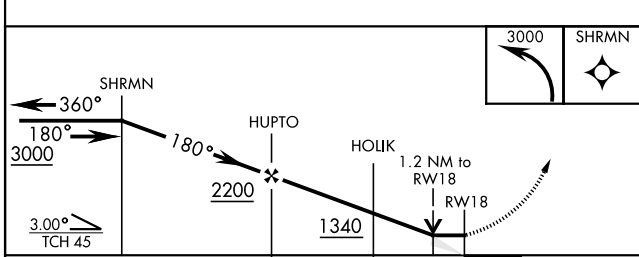
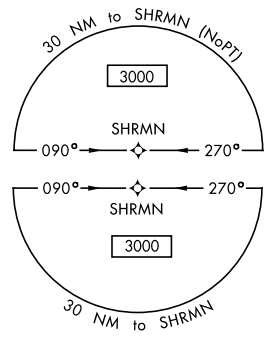
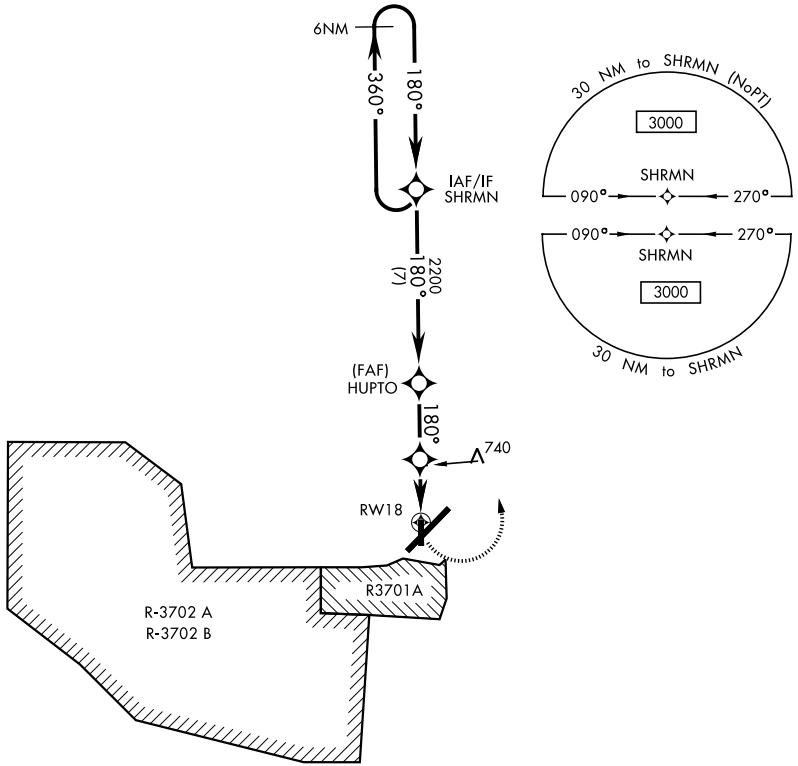
RNAV (GPS) RWY 18

APCH CRS	Rwly ldg	4500
180°	TDZE	562
	Arprt Elev	571

AL-679 [USA]

CAMPBELL AAF (KHOP)

* Circling NA SE of RWY 5-23. DME/DME RNP-0.3 NA.			MISSED APPROACH: Climbing left turn to 3000 direct SHRMN and hold.		
ATIS 125.175 308.4	CAMPBELL APP CON 118.1 269.525	CAMPBELL TOWER 120.9 278.8	GND CON 121.8 266.8	CLNC DEL 138.8	ASR/PAR



ELEV	571	TDZE	562
------	-----	------	-----

The obstacle diagram shows various terrain features and obstructions. Key points include TW 694, a 7466 x 90 obstacle, a 4500 x 100 obstacle, an 81' obstacle, a 10,926 x 150 obstacle, a 607' obstacle, a 661' obstacle, a 640' obstacle, and points 36 and 33.

CATEGORY	A	B	C	D
LNVA MDA	1000-1	438 (500-1)	1000-1½ 438 (500-1½)	NA
CIRCLING *	1060-1	489 (500-1)	1060-1½ 489 (500-1½)	NA

HIRL all Rwy

FORT CAMPBELL, KENTUCKY 36°40'N - 87°30'W CAMPBELL AAF (KHOP)

Amdt 1A 24MAY18

RNAV (GPS) RWY 18

SE-1, 09 SEP 2021 to 07 OCT 2021

SE-1, 09 SEP 2021 to 07 OCT 2021