

# RNAV (GPS) RWY 23

WAAS Chan <b>56203</b> <b>W23A</b>	APCH CRS <b>225°</b>	Rwy Idg <b>10,926</b> TDZE <b>571</b> Arprt Elev <b>571</b>
--	-------------------------	---

AL-679 [USA]

CAMPBELL AAF (KHOP)

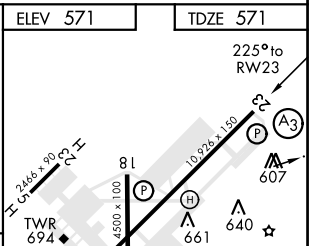
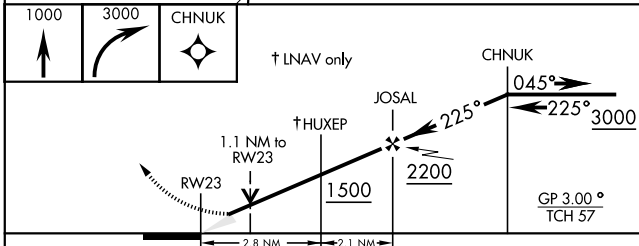
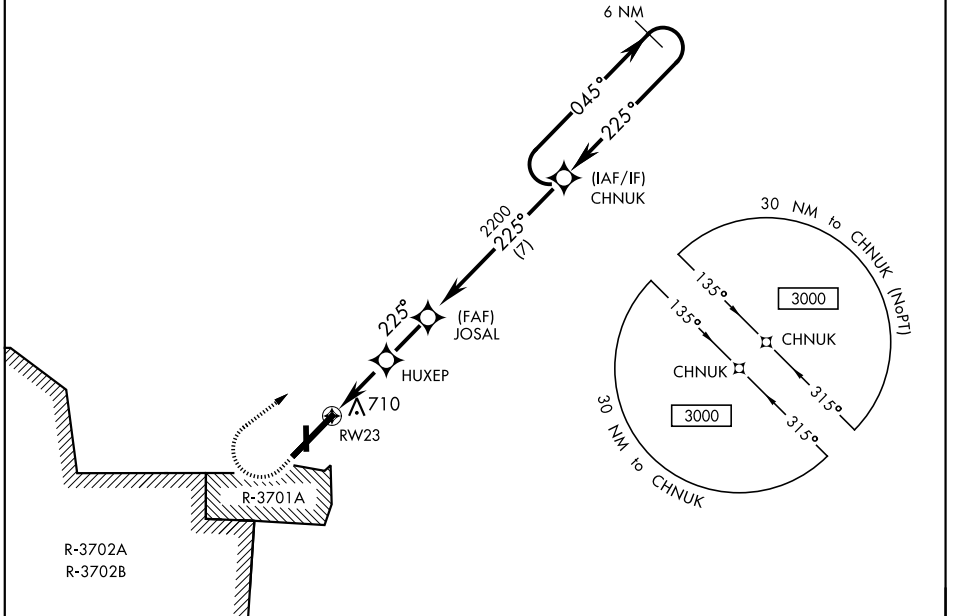
<p>▼ * When ALS inop, increase CAT E RVR to 40. ** When ALS inop, increase CAT E RVR to 50. *** When ALS inop, increase CAT E RVR to 60.</p>	<p>SSALR <b>(A3)</b></p>	<p>MISSED APPROACH: Climb to 1000 then climbing right turn to 3000 direct CHNUK and hold.</p>
--	------------------------------	---

<p>ATIS <b>125.175 308.4</b></p>	<p>CAMPBELL APP CON <b>118.1 269.525</b></p>	<p>CAMPBELL TOWER <b>120.9 278.8</b></p>	<p>GND CON <b>121.8 266.8</b></p>	<p>CLNC DEL <b>138.8</b></p>	<p>ASR/PAR</p>
--------------------------------------	--	--	---------------------------------------	----------------------------------	----------------

\*\*\*\* Circling NA SE of Rwy 5-23.

DME/DME RNP-0.3 NA.

For uncompensated BARO-VNAV systems, LNAV/VNAV NA below -19°C (-2°F) or above 54°C (130°F).



CATEGORY	A	B	C	D	E
LPV DA *	771/24		200	(200-½)	
LNAV/DA **	891/24		320	(400-½)	
LNAV MDA ***	960/24	389 (400-½)	960/35		389 (400-¾)
**** CIRCLING	1060-1	489 (500-1)	1060-1½ 489 (500-1½)	1140-2	569 (600-2)

ELEV 571	TDZE 571
HIRL all Rwy	

# RNAV (GPS) RWY 23

SE-1, 09 SEP 2021 to 07 OCT 2021

SE-1, 09 SEP 2021 to 07 OCT 2021