

FORT CAMPBELL, KENTUCKY

# TACAN RWY 23

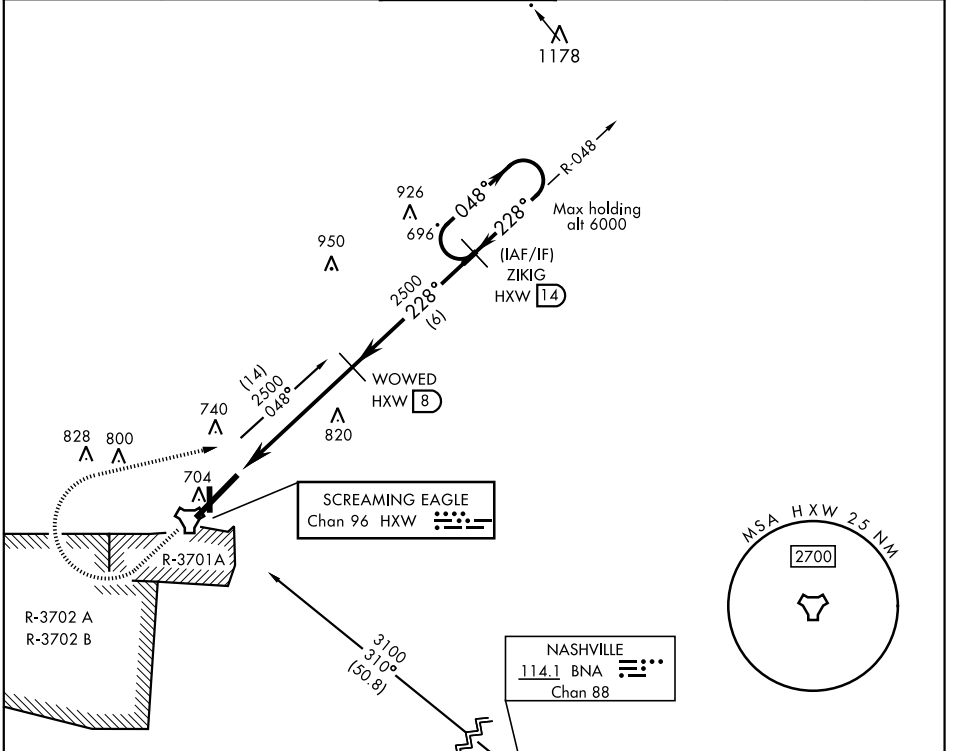
TACAN HXW Chan <b>96</b>	APCH CRS <b>228°</b>	Rwy ldg TDZE Arprt Elev <b>10,926</b> <b>571</b> <b>571</b>
-----------------------------	-------------------------	--

AL-679 [USA]

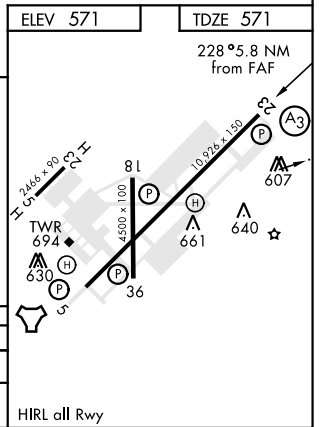
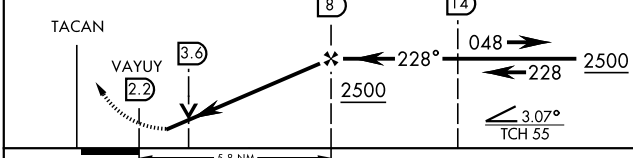
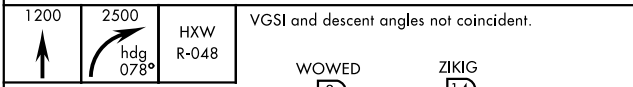
CAMPBELL AAF (KHOP)

<p>▼ * When ALS inop, increase CAT CDE vis to 1 3/8.</p> <p>** Circling NA SE of Rwy 5-23.</p>	<p>SSALR</p>	<p>MISSED APPROACH: Climb to 1200 then climbing right turn to 2500 on hdg 078° and HXW TACAN R-048 to ZIKIG/HXW 14 DME and hold.</p>
--	--------------	--

<p>ATIS</p> <p><b>125.175 308.4</b></p>	<p>CAMPBELL APP CON</p> <p><b>118.1 269.525</b></p>	<p>CAMPBELL TOWER</p> <p><b>120.9 278.8</b></p>	<p>GND CON</p> <p><b>121.8 266.8</b></p>	<p>CLNC DEL</p> <p><b>138.8</b></p>	<p>ASR/PAR</p>
---	---	---	--	-------------------------------------	----------------



Additional restrictions are in effect when restricted areas are active.



CATEGORY	A	B	C	D	E
S-23 *	1080/24	509 (600-3/4)	1080/55	509 (600-1/4)	
CIRCLING **	1080-1	509 (600-1)	1080-1 1/2 509 (600-1 1/2)	1140-2	569 (600-2)

FORT CAMPBELL, KENTUCKY

36° 40' N - 87° 30' W

CAMPBELL AAF (KHOP)

Orig B 05DEC19

# TACAN RWY 23

SE-1, 09 SEP 2021 to 07 OCT 2021

SE-1, 09 SEP 2021 to 07 OCT 2021