

WAAS CH 58207 W25A	APP CRS 252°	Rwy Idg TDZE Apt Elev	4196 663 684
---------------------------------	------------------------	-----------------------------	-----------------------------------------

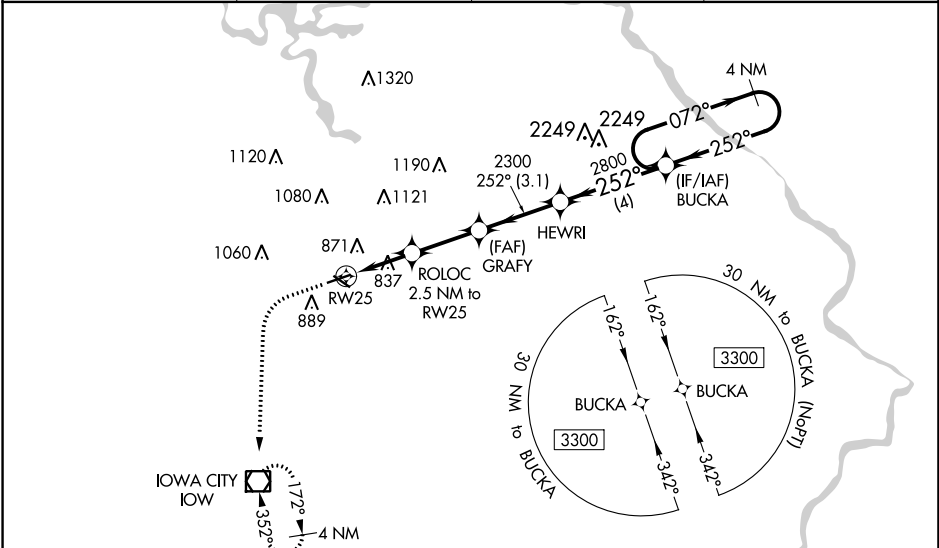
RNAV (GPS) RWY 25

IOWA CITY MUNI (IOW)

⚠ Circling to Rwy 7, 12, 30 NA at night. For uncompensated Baro-VNAV systems, LNAV/VNAV NA below -23°C (-9°F) or above 54°C (130°F). Baro-VNAV and VDP NA when using Cedar Rapids altimeter setting. Rwy 25 helicopter visibility reduction below ¼ SM NA. Rwy 7, 12, 30 helicopter visibility reduction below 1 SM NA. DME/DME RNP-0.3 NA. When local altimeter setting not received, use Cedar Rapids altimeter setting: increase LPV DA to 1056, increase LNAV/VNAV DA to 1196 feet and visibility ¼ SM; increase all MDAs 80 feet and visibility Cats C and D 1¼ SM increase Circling Cat D visibility ¼ SM.

MISSED APPROACH: Climb to 1100 then climbing left turn to 2600 direct IOW VOR/DME and hold.

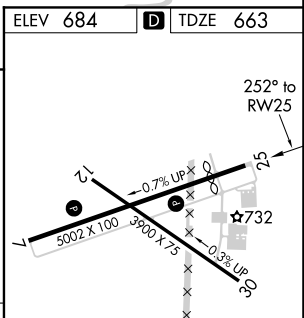
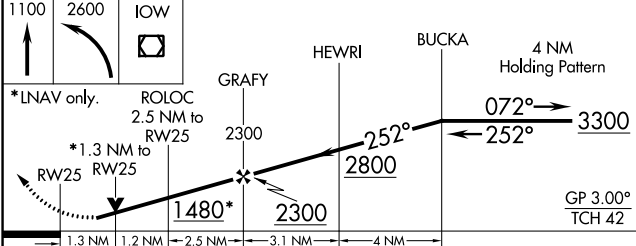
ASOS 128.075	CEDAR RAPIDS APP CON* 119.7 266.8	CLNC DEL 119.05	UNICOM 122.8 (CTAF) 1
------------------------	---------------------------------------------	---------------------------	---------------------------------



NC-3, 09 SEP 2021 to 07 OCT 2021

NC-3, 09 SEP 2021 to 07 OCT 2021

ELEV 684	D TDZE 663
----------	-------------------



CATEGORY	A	B	C	D
LPV DA	992-1 3/8 329 (400-1 1/8)			
LNAV/VNAV DA	1132-1 5/8 469 (500-1 1/8)			
LNAV MDA	1100-1 437 (500-1)	1100-1 1/4 437 (500-1 1/4)		
C CIRCLING	1260-1 576 (600-1)	1440-2 1/4 756 (800-2 1/4)	1440-2 1/2 756 (800-2 1/2)	

REIL Rws 7 and 25
MIRL Rws 7-25 and 12-30 **1**