

WAAS CH 86841 W30A	APP CRS 306°	Rwy Idg 3900 TDZE 657 Apt Elev 684
--	------------------------	---

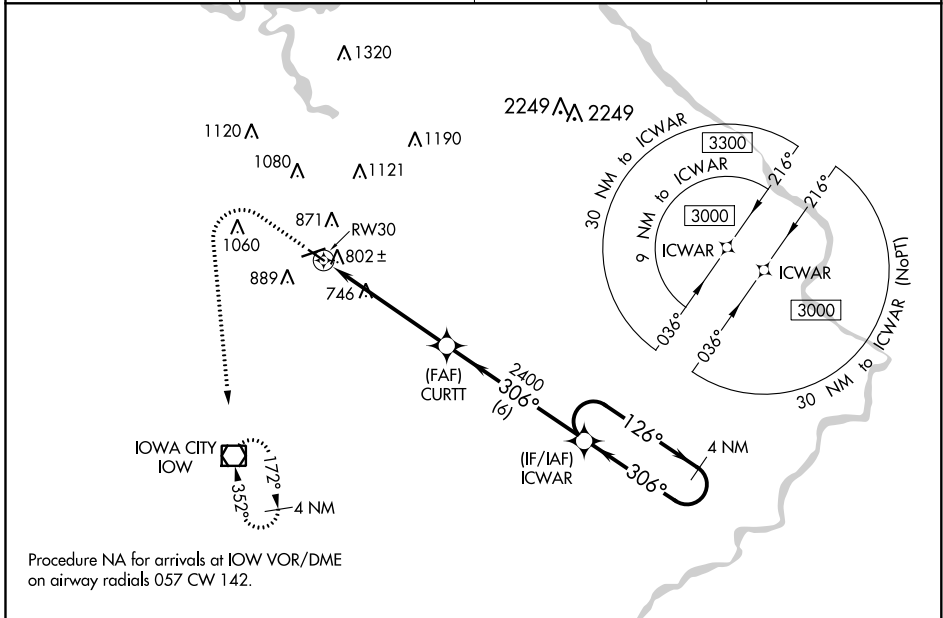
RNAV (GPS) RWY 30

IOWA CITY MUNI (IOW)

⚠ Rwy 7, 12, 30 helicopter visibility reduction below 1 SM NA. DME/DME RNP-0.3 NA.
⚠ When local altimeter setting not received, use Cedar Rapids altimeter setting and increase all MDA 80 feet, LP Cat C and D visibility 1/8 SM, LNAV and Circling Cat C and D visibility 1/4 SM. Straight-in Rwy 30 NA at night, Circling Rwy 7, 12 NA at night.

MISSED APPROACH: Climb to 1100 then climbing left turn to 3000 direct IOW VOR/DME and hold.

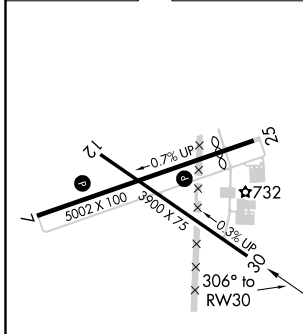
ASOS 128.075	CEDAR RAPIDS APP CON * 119.7 266.8	CLNC DEL 119.05	UNICOM 122.8 (CTAF) 0
------------------------	--	---------------------------	---------------------------------



NC-3, 09 SEP 2021 to 07 OCT 2021

NC-3, 09 SEP 2021 to 07 OCT 2021

ELEV 684	D	TDZE 657
----------	----------	----------



1100	3000	IOW	ICWAR	4 NM Holding Pattern
CURTT		RWY 30		
RWY 30		2400	306°	3000
5.4 NM		6 NM		
CATEGORY	A	B	C	D
LP MDA	1000-1 343 (400-1)			
LNAV MDA	1060-1	403 (400-1)	1060-1 1/8	403 (400-1 1/8)
C CIRCLING	1260-1	576 (600-1)	1440-2 1/4	1440-2 1/2
			756 (800-2 1/4)	756 (800-2 1/2)