

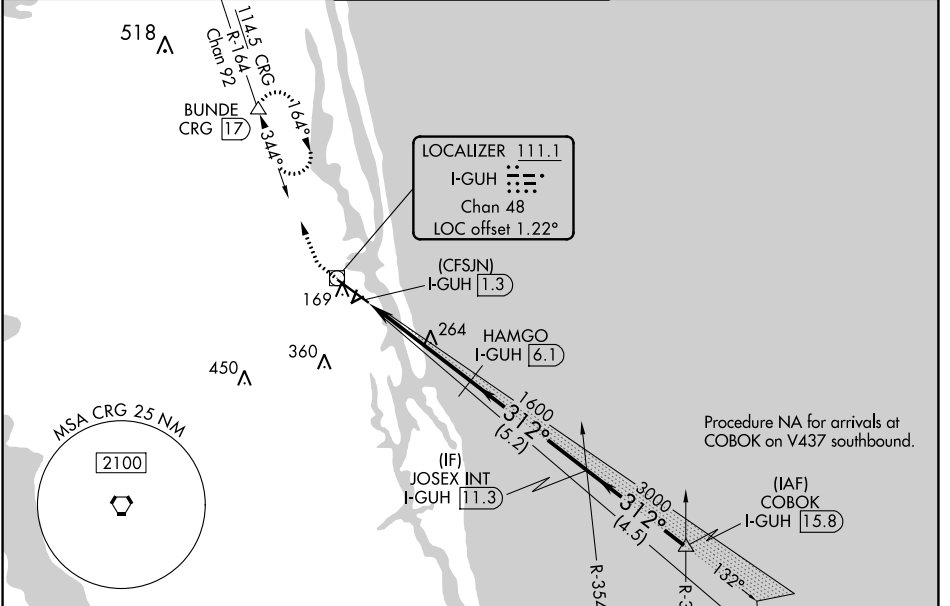
LOC/DME I-GUH <b>111.1</b> Chan <b>48</b>	APP CRS <b>312°</b>	Rwy Idg TDZE Apt Elev	<b>5925</b> <b>8</b> <b>10</b>
---	------------------------	-----------------------------	--------------------------------------

# ILS or LOC RWY 31

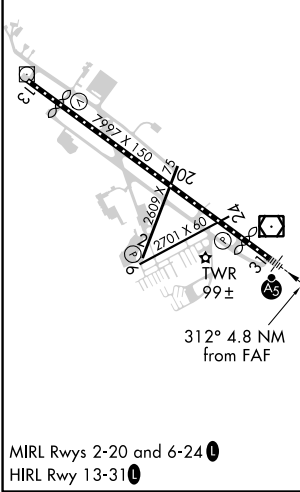
NORTHEAST FLORIDA RGNL (SGJ)

DME required.	MALS R	MISSED APPROACH: Climb to 3000 on heading 312° and on CRG VORTAC R-164 to BUNDE/CRG 17 DME and hold, continue climb-in-hold to 3000.
<p><b>▽</b> Circling Rwy 2, 6 NA at night. For inop ALS, increase S-LOC 31 Cat C/D visibility to 1½ SM.</p> <p><b>▲</b></p>		

ATIS <b>119.625</b>	JACKSONVILLE APP CON <b>120.75</b>	ST AUGUSTINE TOWER ★ <b>127.625 (CTAF) 269.475</b>	GND CON <b>121.175 251.125</b>	UNICOM <b>122.95</b>
------------------------	---------------------------------------	---	-----------------------------------	-------------------------



ELEV 10	<b>D</b>	TDZE 8
---------	----------	--------



3000	CRG R-164	BUNDE	VGSi and ILS glidepath not coincident (VGSi Angle 3.00/TCH 54).	
hdg 312°			JOSEX INT I-GUH 11.3	COBOK I-GUH 15.8
*LOC only.	*I-GUH 2.7	HAMGO I-GUH 6.1		
(CFSJN) I-GUH 1.3		1600	312°	3000
			312°	3000
				GS 3.00° TCH 57
CATEGORY	A	B	C	D
S-ILS 31	258-½		250 (300-½)	
S-LOC 31	520-½ 512 (600-½)		520-1 512 (600-1)	
<b>C</b> CIRCLING	520-1	580-1	680-1¾	740-2½
	510 (600-1)	570 (600-1)	670 (700-1¾)	730 (800-2½)

SE-3, 09 SEP 2021 to 07 OCT 2021

SE-3, 09 SEP 2021 to 07 OCT 2021