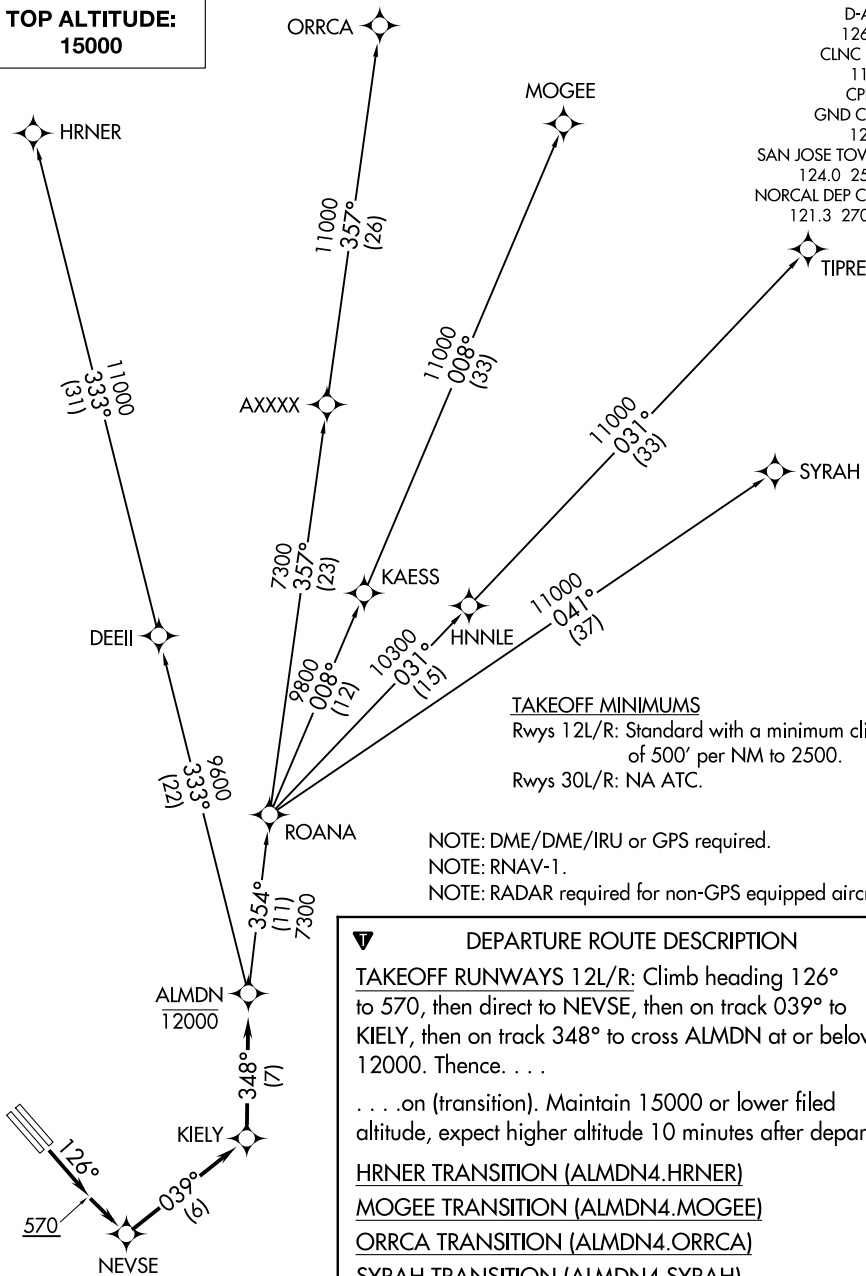


# ALMDN FOUR DEPARTURE (RNAV)

**TOP ALTITUDE:  
15000**

D-ATIS  
126.95  
CLNC DEL  
118.0  
CPDLC  
GND CON  
121.7  
SAN JOSE TOWER \*  
124.0 257.6  
NORCAL DEP CON  
121.3 270.35



### TAKEOFF MINIMUMS

Rwys 12L/R: Standard with a minimum climb of 500' per NM to 2500.  
Rwys 30L/R: NA ATC.

NOTE: DME/DME/IRU or GPS required.  
NOTE: RNAV-1.  
NOTE: RADAR required for non-GPS equipped aircraft.

### DEPARTURE ROUTE DESCRIPTION

**TAKEOFF RUNWAYS 12L/R:** Climb heading 126° to 570, then direct to NEVSE, then on track 039° to KIELY, then on track 348° to cross ALMDN at or below 12000. Thence. . . .on (transition). Maintain 15000 or lower filed altitude, expect higher altitude 10 minutes after departure.

- HRNER TRANSITION (ALMDN4.HRNER)
- MOGEE TRANSITION (ALMDN4.MOGEE)
- ORRCA TRANSITION (ALMDN4.ORRCA)
- SYRAH TRANSITION (ALMDN4.SYRAH)
- TIPRE TRANSITION (ALMDN4.TIPRE)

NOTE: Chart not to scale.

# ALMDN FOUR DEPARTURE (RNAV)

SW-2, 09 SEP 2021 to 07 OCT 2021

SW-2, 09 SEP 2021 to 07 OCT 2021