

LOC/DME I-SJC <b>110.9</b> Chan 46	APP CRS <b>306°</b>	Rwy Idg <b>7614</b> TDZE <b>57</b> Apt Elev <b>62</b>
--	------------------------	---

# ILS RWY 30L (SA CAT I & II)

## NORMAN Y MINETA SAN JOSE INTL (SJC)

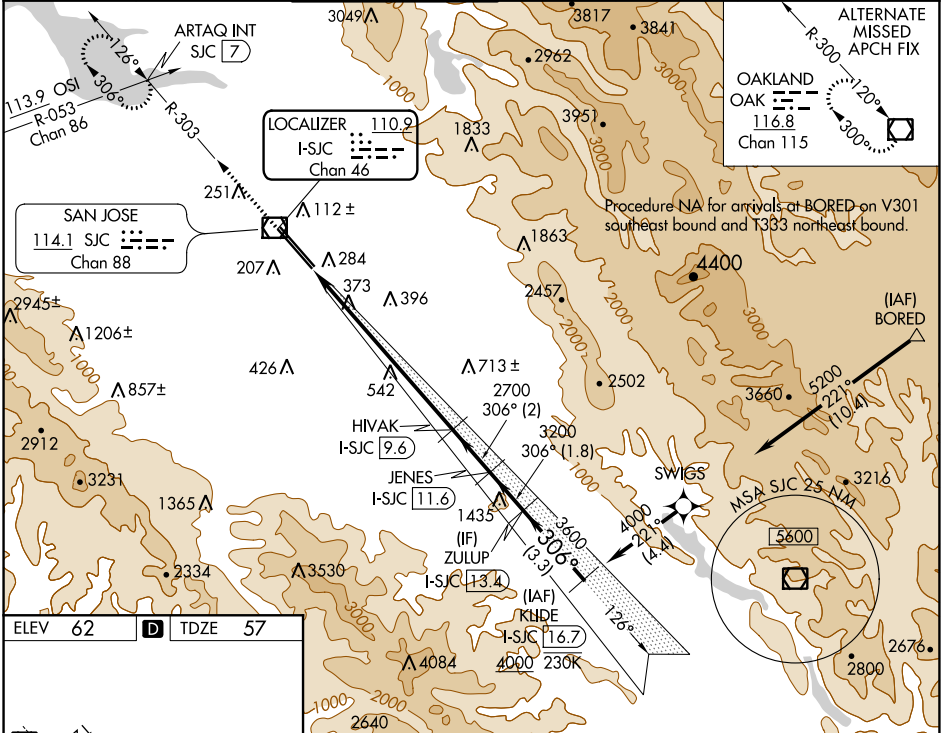
RNAV 1-GPS or RADAR required for procedure entry. DME required.  
From BORED: RNAV 1-GPS required.

- SA CAT I: Requires specific OPSPEC, MSPEC, or LOA approval and use of HUD to DH.
- SA CAT II: Reduced lighting: requires specific OPSPEC, MSPEC, or LOA approval and use of autoland or HUD to touchdown. SA CAT I/II: Procedure NA when tower closed.



MISSED APPROACH: Climb to 1900 on SJC VOR/DME R-303 to ARTAQ INT/SJC 7 DME and hold.

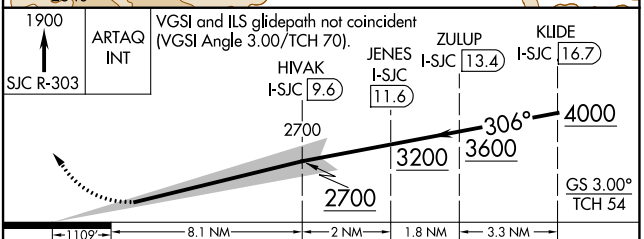
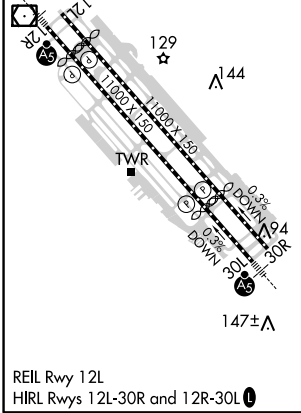
D-ATIS <b>126.95</b>	NORCAL APP CON <b>120.1 290.25</b>	SAN JOSE TOWER* <b>124.0</b> (CTAF) <b>257.6</b>	GND CON <b>121.7</b>	CLNC DEL <b>118.0</b>	CPDLC	UNICOM <b>122.95</b>
-------------------------	---------------------------------------	---	-------------------------	--------------------------	-------	-------------------------



SW-2, 09 SEP 2021 to 07 OCT 2021

SW-2, 09 SEP 2021 to 07 OCT 2021

ELEV 62	<b>D</b>	TDZE 57
---------	----------	---------



CATEGORY	A	B	C	D
S-ILS 30L	SA CAT I RA 147/14 150 DA 207			
S-ILS 30L	SA CAT II RA 97/12 100 DA 157			

### SA CATEGORY I & II ILS - SPECIAL AIRCREW AND AIRCRAFT CERTIFICATION REQUIRED