

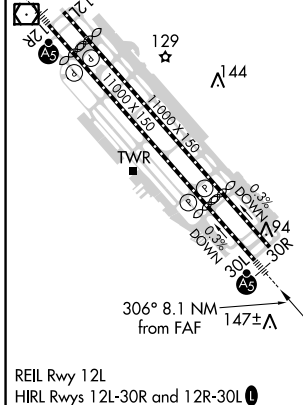
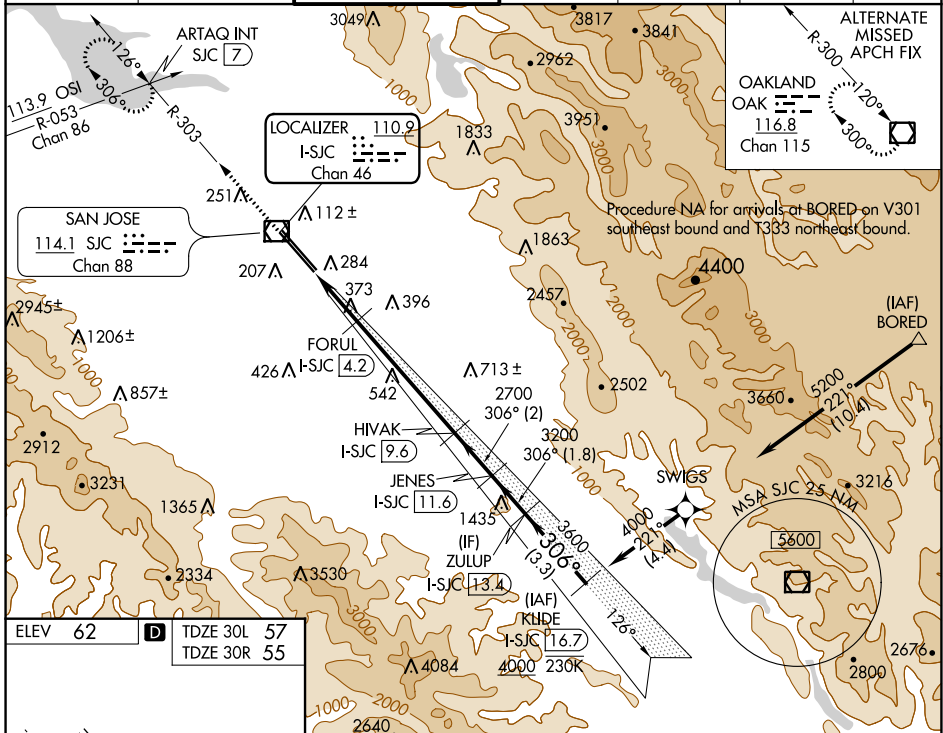
LOC/DME I-SJC <b>110.9</b> Chan 46	APP CRS <b>306°</b>	Rwy Idg 7614 7597 TDZE 57 55 Apt Elev 62 62	30L 30R
--	------------------------	--	---------

# ILS or LOC RWY 30L

NORMAN Y MINETA SAN JOSE INTL (SJC)

RNAV 1-GPS or RADAR required for procedure entry. DME required. From BORED: RNAV 1-GPS required.		MALS Rwy 30L	MISSED APPROACH: Climb to 1900 on SJC VOR/DME R-303 to ARTAQ INT/SJC 7 DME and hold.
# RVR 1800 authorized with use of FD or AP or HUD to DA.			

D-ATIS <b>126.95</b>	NORCAL APP CON <b>120.1 290.25</b>	SAN JOSE TOWER * <b>124.0 (CTAF) 0 257.6</b>	GND CON <b>121.7</b>	CLNC DEL <b>118.0</b>	CPDLC	UNICOM <b>122.95</b>
-------------------------	---------------------------------------	---	-------------------------	--------------------------	-------	-------------------------



1900	ARTAQ INT	VGSI and ILS glidepath not coincident (VGSI Angle 3.00/TCH 70).		KLIDE I-SJC 16.7
SJC R-303	FORUL I-SJC 4.2	HIAK I-SJC 9.6	JENES I-SJC 11.6	ZULUP I-SJC 13.4
*LOC only	*I-SJC 3	2700	3200	3600
I-SJC 1.4	I-SJC 3	1000*	2700	4000
1.6 NM	1.2 NM	5.3 NM	2 NM	1.8 NM
3.3 NM	GS 3.00° TCH 54			
CATEGORY	A	B	C	D
S-ILS 30L#	257/24 200 (200-½)			
S-LOC 30L	640/24	583 (600-½)	640-1¼	583 (600-1¼)
SIDESTEP 30R	640-1	585 (600-1)	640-1¾	585 (600-2)

SW-2, 09 SEP 2021 to 07 OCT 2021

SW-2, 09 SEP 2021 to 07 OCT 2021