

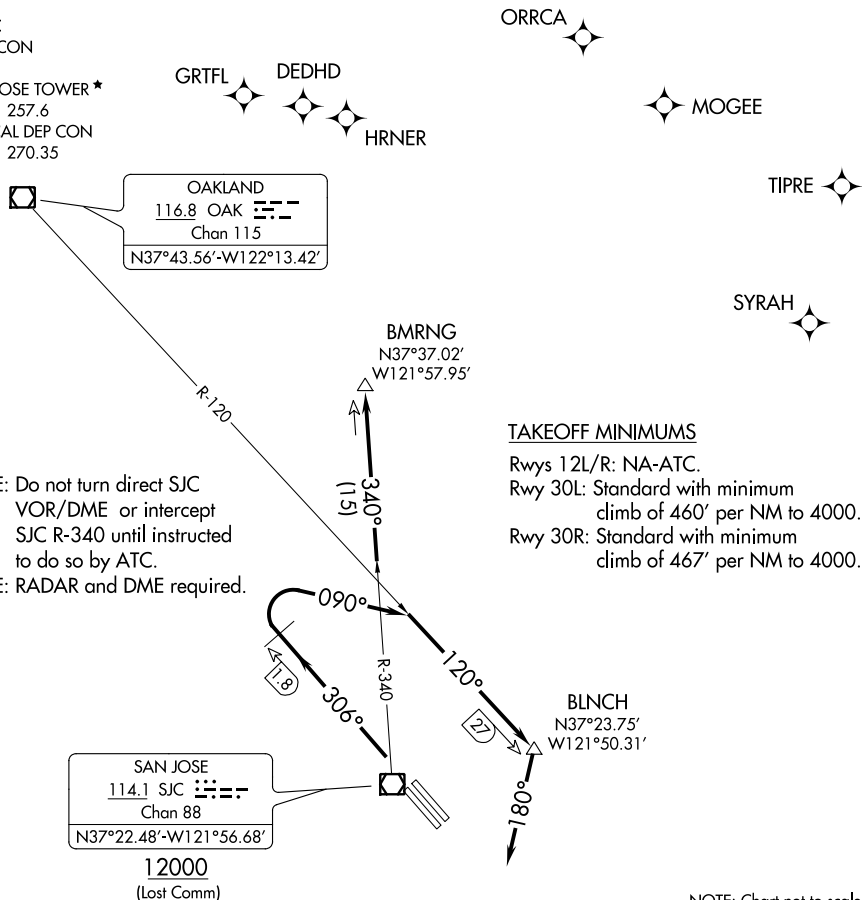
(LOUPE5.BMRNG) 19143  
**LOUPE FIVE DEPARTURE**

AL-693 (FAA)

NORMAN Y MINETA SAN JOSE INTL (SJC)  
 SAN JOSE, CALIFORNIA

D-ATIS  
 126.95  
 CLNC DEL  
 118.0  
 CPDLC  
 GND CON  
 121.7  
 SAN JOSE TOWER ★  
 124.0 257.6  
 NORCAL DEP CON  
 121.3 270.35

**TOP ALTITUDE:  
 5000**



NOTE: Do not turn direct SJC VOR/DME or intercept SJC R-340 until instructed to do so by ATC.  
 NOTE: RADAR and DME required.

TAKEOFF MINIMUMS

Rwys 12L/R: NA-ATC.  
 Rwy 30L: Standard with minimum climb of 460' per NM to 4000.  
 Rwy 30R: Standard with minimum climb of 467' per NM to 4000.

SAN JOSE  
 114.1 SJC  
 Chan 88  
 N37°22.48'-W121°56.68'

**12000**  
 (Lost Comm)

NOTE: Chart not to scale.



**DEPARTURE ROUTE DESCRIPTION**

TAKEOFF RUNWAYS 30L/R: Climb heading 306°, at SJC VOR/DME 1.8 DME northwest turn right heading 090° to intercept OAK R-120 to BLNCH, then turn right heading 180° for RADAR vectors to SJC VOR/DME, then on SJC R-340 to BMRNG INT. Maintain 5000, expect filed altitude 10 minutes after departure.

LOST COMMUNICATIONS

RUNWAYS 30L/R: If not in contact with departure control upon reaching BLNCH, depart BLNCH heading 180°. When able turn right direct SJC VOR/DME, cross SJC VOR/DME at or above 12000, then on SJC R-340 to BMRNG INT before proceeding on course.

**LOUPE FIVE DEPARTURE**  
 (LOUPE5.BMRNG) 25APR19

SAN JOSE, CALIFORNIA  
 NORMAN Y MINETA SAN JOSE INTL (SJC)

SW-2, 09 SEP 2021 to 07 OCT 2021

SW-2, 09 SEP 2021 to 07 OCT 2021