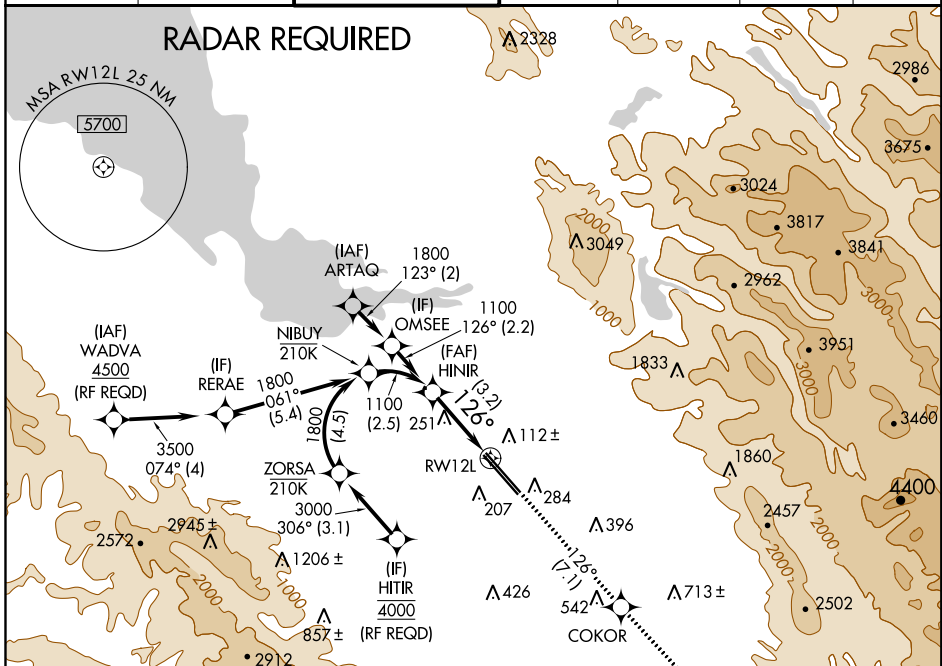


APP CRS	Rwy Idg	<b>8831</b>
<b>126°</b>	TDZE	<b>44</b>
	Apt Elev	<b>62</b>

# RNAV (RNP) Z RWY 12L

NORMAN Y MINETA SAN JOSE INTL (SJC)

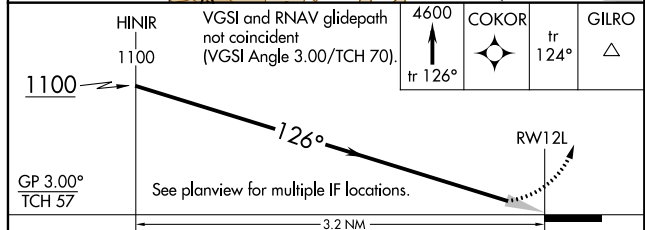
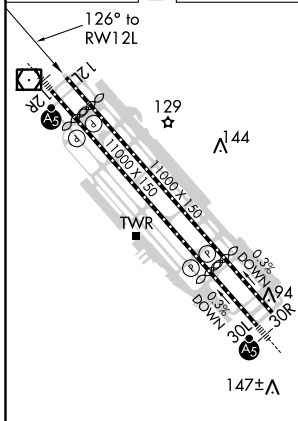
<p>For uncompensated Baro-VNAV systems, procedure NA below 0°C (32°F) or above 54°C (130°F). GPS required.</p>			<p>MISSED APPROACH: Climb to 4600 on track 126° to COKOR and on track 124° to GILRO and hold.</p>			
D-ATIS	NORCAL APP CON	SAN JOSE TOWER *	GND CON	CLNC DEL	CPDLC	UNICOM
<b>126.95</b>	<b>120.1 290.25</b>	<b>124.0 (CTAF) 257.6</b>	<b>121.7</b>	<b>118.0</b>		<b>122.95</b>



SW-2, 09 SEP 2021 to 07 OCT 2021

SW-2, 09 SEP 2021 to 07 OCT 2021

ELEV	<b>62</b>	<b>D</b>	TDZE	<b>44</b>
------	-----------	----------	------	-----------



CATEGORY	A	B	C	D
RNP 0.18 DA		385-1 $\frac{1}{8}$	341 (400-1 $\frac{1}{8}$ )	
RNP 0.30 DA		451-1 $\frac{3}{8}$	407 (400-1 $\frac{3}{8}$ )	

REIL Rwy 12L  
HIRL Rwy 12L-30R and 12R-30L

**AUTHORIZATION REQUIRED**