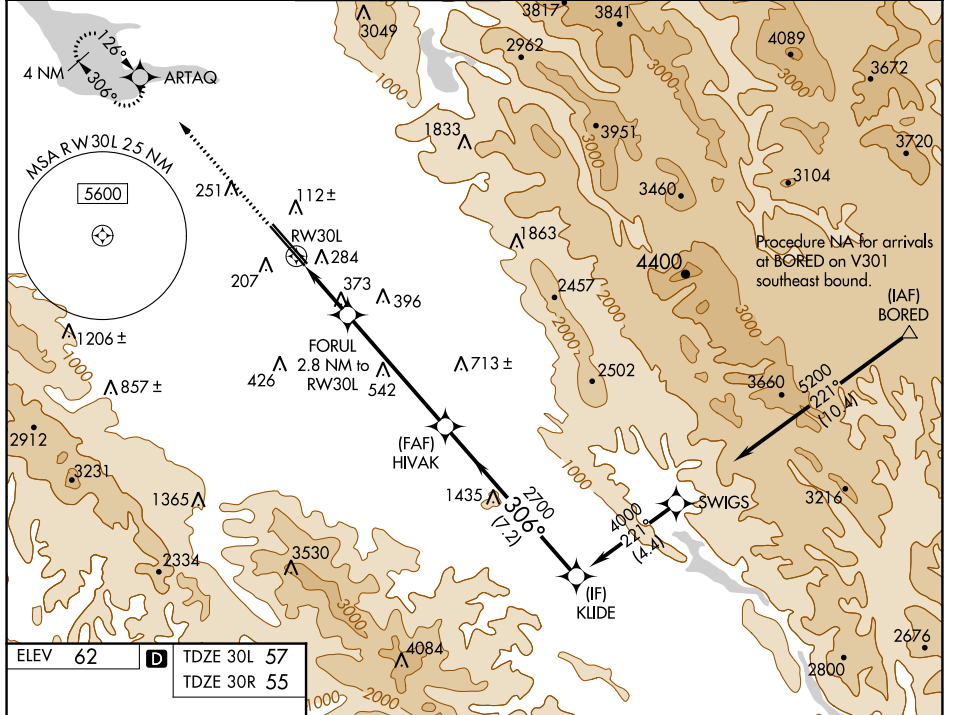


WAAS CH 97306 W30A	APP CRS 306°	Rwy Idg 30L 7614 30R 7597	TDZE 57 55	Apt Elev 62 62
--	------------------------	---	--------------------------------	------------------------------------

RNAV (GPS) Y RWY 30L

NORMAN Y MINETA SAN JOSE INTL (SJC)

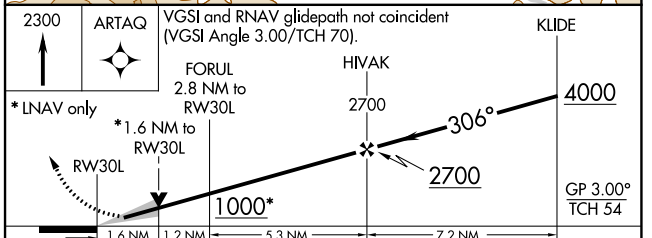
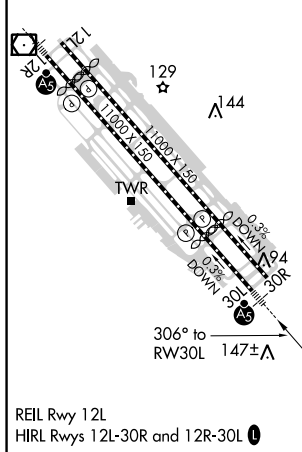
<p>For uncompensated Baro-VNAV systems, LNAV/VNAV NA below -1°C (31°F) or above 54°C (130°F). DME/DME RNP-0.3 NA. # RVR 1800 authorized with use of FD or AP or HUD to DA.</p>				<p>MALSR Rwy 30L </p>	<p>MISSED APPROACH: Climb to 2300 direct ARTAQ and hold.</p>		
D-ATIS 126.95	NORCAL APP CON 120.1	290.25	SAN JOSE TOWER * 124.0 (CTAF) 257.6	GND CON 121.7	CLNC DEL 118.0	CPDLC	UNICOM 122.95



SW-2, 09 SEP 2021 to 07 OCT 2021

SW-2, 09 SEP 2021 to 07 OCT 2021

ELEV 62	D	TDZE 30L 57	TDZE 30R 55
---------	----------	-------------	-------------



CATEGORY	A	B	C	D
LPV DA #		257/24	200 (200-½)	
LNAV/VNAV DA		540/60	483 (500-1¼)	
LNAV MDA	640/24	583 (600-½)	640-1¼	583 (600-1¼)
SIDESTEP 30R	640-1 585 (600-1)			