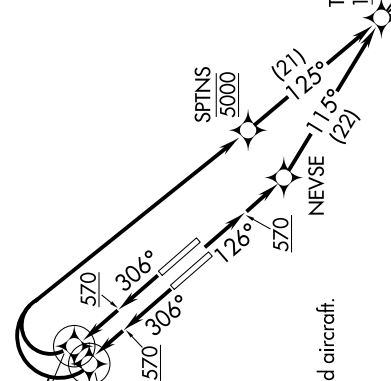


TECKY THREE DEPARTURE (RNAV)

SW-2, 09 SEP 2021 to 07 OCT 2021

D-ATIS 126.95
CLNC DEL 118.0
CPDLC 118.0
GND CON 121.7
SAN JOSE TOWER* 124.0 257.6
NORCAL DEP CON 121.3 270.35

MLPTS 900 230K
STCLR 900 230K



TOP ALTITUDE:
FL190

TAKEOFF MINIMUMS

Rwys 12L/R: Standard with a minimum climb of 500' per NM to 570.

Rwys 30L/R: Standard with a minimum climb of 500' per NM to 700.

NOTE: RNAV 1

NOTE: RADAR required for non-GPS equipped aircraft.

NOTE: DME/DME/IRU or GPS required.

NOTE: Rwys 12L/R: LOSHN transition NA.

DEPARTURE ROUTE DESCRIPTION

TAKEOFF RUNWAYS 12L, 12R: Climb heading 126° to 570, then direct NEVSE, then on track 115° to cross TECKY at or above 13000, thence. . . .

TAKEOFF RUNWAY 30L: Climb heading 306° to 570, then direct to cross STCLR at or above 900 at or below 230K, then right turn direct to cross SPTNS at 5000, then on track 125° to cross TECKY at or above 13000, thence. . . .

TAKEOFF RUNWAY 30R: Climb heading 306° to 570, then direct to cross MLPTS at or above 900 at or below 230K, then right turn direct to cross SPTNS at 5000, then on track 125° to cross TECKY at or above 13000, thence. . . .

. . . on (transition), maintain FL190. Expect filed altitude 10 minutes after departure.

EBAYE TRANSITION (TECKY3.EBAYE)
LOSHN TRANSITION (TECKY3.LOSHN)

NOTE: Chart not to scale.

SW-2, 09 SEP 2021 to 07 OCT 2021