

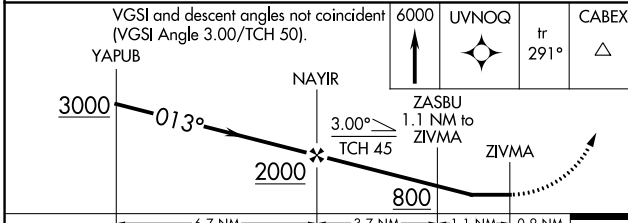
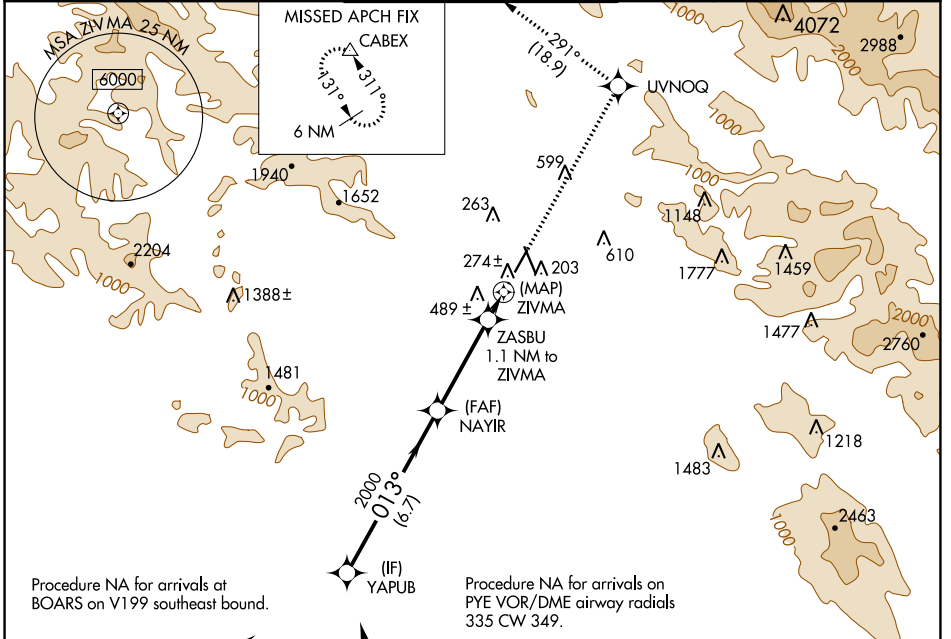
WAAS CH 69230 W02A	APP CRS 013°	Rwy Idg TDZE 129 Apt Elev 129	4802
--	------------------------	---	-------------

RNAV (GPS) RWY 2

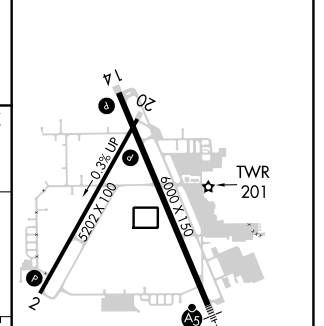
CHARLES M SCHULZ-SONOMA COUNTY (STS)

RNP APCH.	MISSED APPROACH: Climb to 6000 direct UVNOQ and on track 291° to CABEX and hold, continue climb-in-hold to 6000.
▼ ▲ Rwy 2 helicopter visibility reduction below ¾ SM NA.	

ATIS 120.55	OAKLAND CENTER 127.8 353.5	SANTA ROSA TOWER★ 118.5 (CTAF) 0 363.0	GND CON 121.9	UNICOM 122.95
-----------------------	--------------------------------------	--	-------------------------	-------------------------



ELEV 129	D	TDZE 129
----------	---	----------



CATEGORY	A	B	C	D
LP MDA	500-1 371 (400-1)			
LNAV MDA	660-1	531 (600-1)	660-1½	531 (600-1½)
CIRCLING	660-1 531 (600-1)	680-1 551 (600-1)	1080-3 951 (1000-3)	1420-3 1291 (1300-3)

MIRL Rwy 2-20	1
HIRL Rwy 14-32	1

SW-2, 09 SEP 2021 to 07 OCT 2021

SW-2, 09 SEP 2021 to 07 OCT 2021