

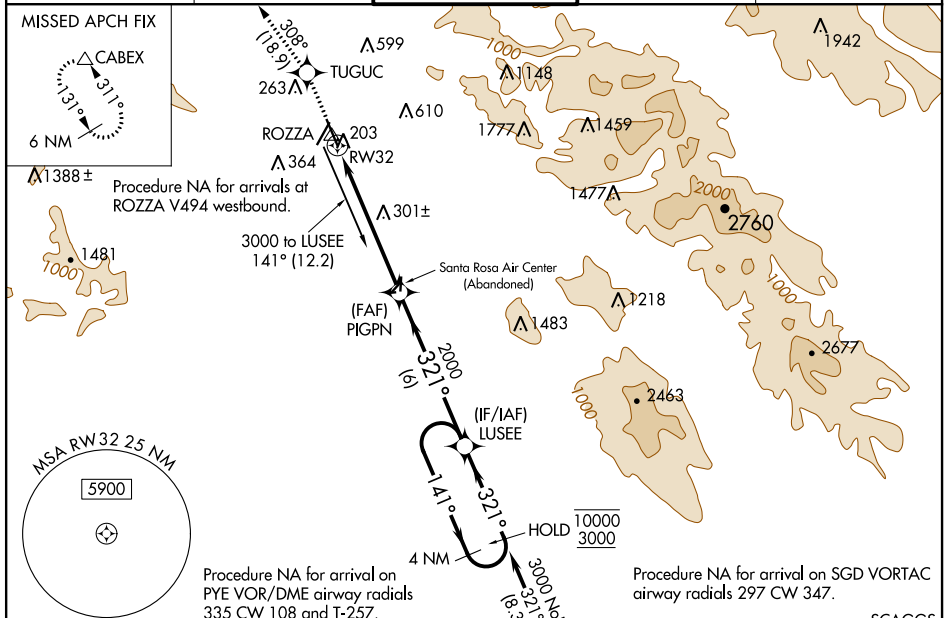
WAAS CH 72611 W32A	APP CRS 321°	Rwy Idg TDZE Apt Elev	6000 122 129
--	------------------------	-----------------------------	---

RNAV (GPS) RWY 32

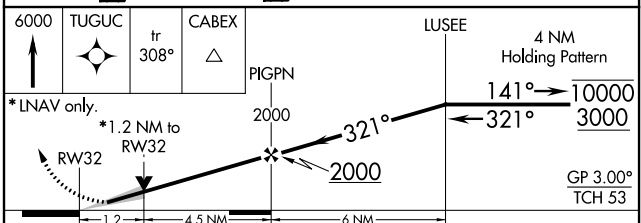
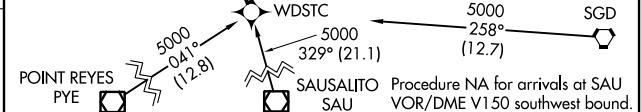
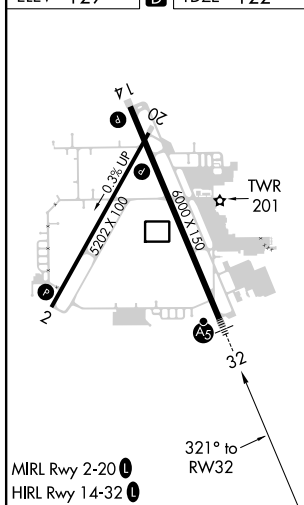
CHARLES M SCHULZ-SONOMA COUNTY (STS)

RNP APCH-GPS.	MALSRL 	MISSED APPROACH: Climb to 6000 direct TUGUC and on track 308° to CABEX and hold, continue climb-in-hold to 6000.
<p> For uncompensated Baro-VNAV systems, LNAV/VNAV NA below -4°C or above 54°C. #RVR 1800 authorized with use of FD or AP or HUD to DA.</p>		

ATIS 120.55	OAKLAND CENTER 127.8 353.5	SANTA ROSA TOWER* 118.5 (CTAF) 0 363.0	GND CON 121.9	UNICOM 122.95
-----------------------	--------------------------------------	--	-------------------------	-------------------------



ELEV 129	D	TDZE 122
----------	----------	----------



CATEGORY	A	B	C	D
LPV DA#	322/24 200 (200-½)			
LNAV/VNAV DA	570/50 448 (500-1)			
LNAV MDA	560/24 438 (500-½)		560/40 438 (500-¾)	
CIRCLING	600-1 471 (500-1)		680-1 551 (600-1)	
	1080-3 951 (1000-3)		1420-3 1291 (1300-3)	

SW-2, 09 SEP 2021 to 07 OCT 2021

SW-2, 09 SEP 2021 to 07 OCT 2021