

WAAS CH <b>78216</b> <b>W18A</b>	APP CRS <b>182°</b>	Rwy Idg <b>8000</b> TDZE <b>407</b> Apt Elev <b>407</b>
--	------------------------	---

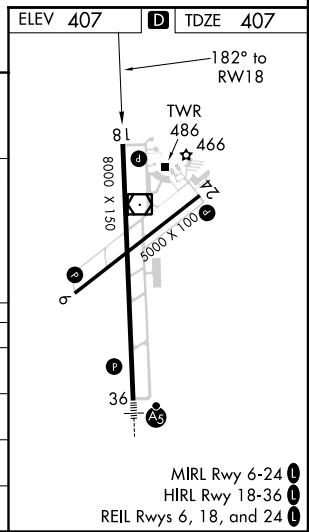
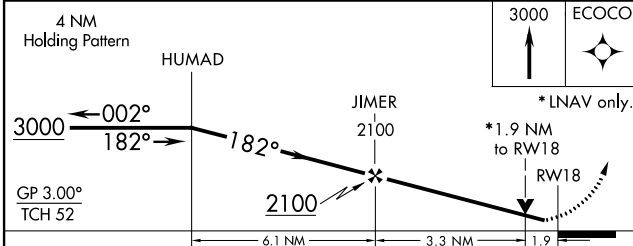
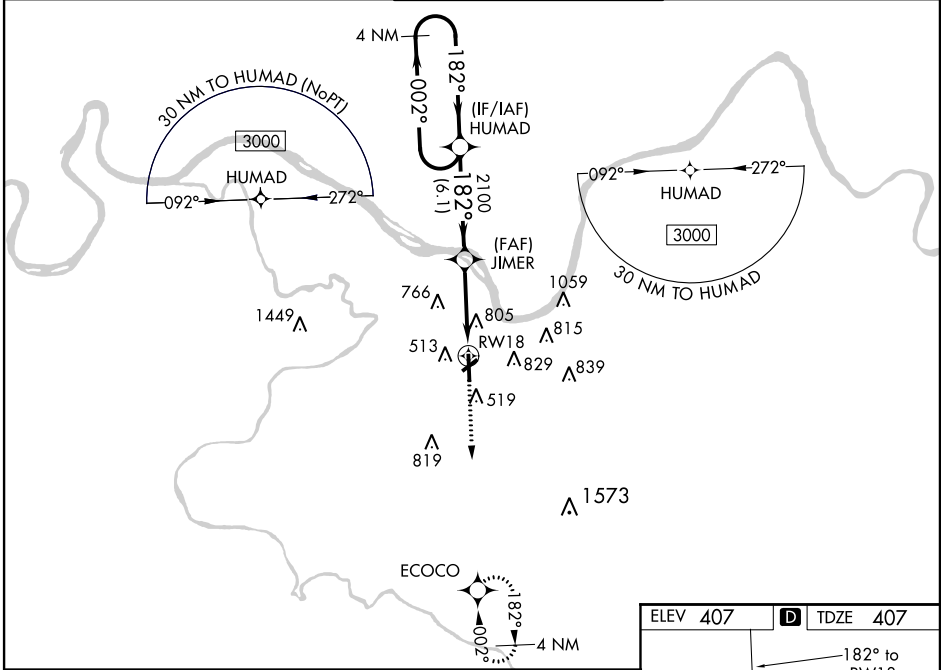
# RNAV (GPS) RWY 18

OWENSBORO-DAVIESS COUNTY RGNL (OWB)

**⚠** For uncompensated Baro-VNAV systems, LNAV/VNAV NA below -15° C (5°F) or above 54°C (130°F). DME/DME RNP-0.3 NA. Rwy 18 helicopter visibility reduction below 3/4 SM NA. When local altimeter setting not received, use Evansville altimeter setting: increase LPV DA to 666 feet; increase LNAV/VNAV DA to 1204 feet and all Cats visibility 1/4 mile; increase all MDA 60 feet and LNAV Cats C/D visibility 1/8 mile and Circling Cats C/D visibility 1/4 mile. Baro-VNAV and VDP NA when using Evansville altimeter setting.

**MISSED APPROACH:**  
Climb to 3000 direct ECOCO and hold.

AWOS-3PT <b>119.025</b>	EVANSVILLE APP CON * <b>124.025 290.9</b>	OWENSBORO TOWER * <b>120.7 (CTAF) 251.15</b>	GND CON <b>121.7</b>	UNICOM <b>122.95</b>
----------------------------	--	---	-------------------------	-------------------------



CATEGORY	A	B	C	D
LPV DA	607-3/4 200 (200-3/4)			
LNAV/ VNAV DA	1145-2 1/2 738 (800-2 1/2)			
LNAV MDA	1060-1	653 (700-1)	1060-1 7/8 653 (700-1 7/8)	
CIRCLING	1060-1 653 (700-1)	1120-1 713 (800-1)	1140-2 733 (800-2)	1140-2 1/4 733 (800-2 1/4)

MIRL Rwy 6-24  
HIRL Rwy 18-36  
REIL Rwy 6, 18, and 24

SE-1, 09 SEP 2021 to 07 OCT 2021

SE-1, 09 SEP 2021 to 07 OCT 2021