

WAAS CH 49116 W24A	APP CRS 236°	Rwy Idg 5000 TDZE 403 Apt Elev 407
--	------------------------	---

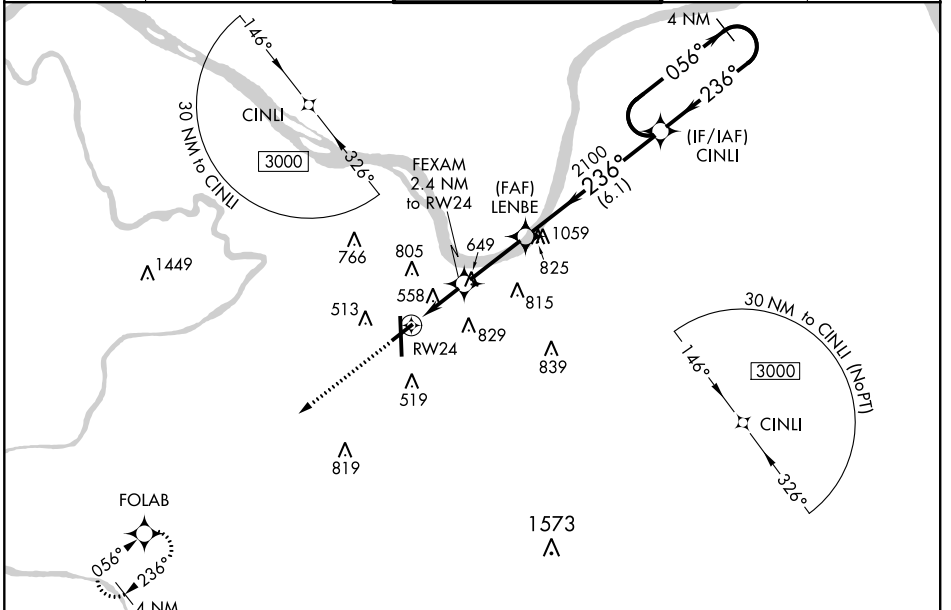
RNAV (GPS) RWY 24

OWENSBORO-DAVIESS COUNTY RGNL (OWB)

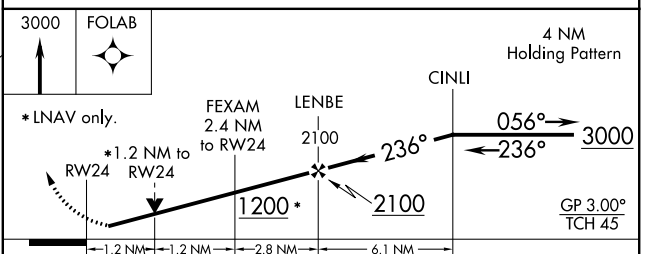
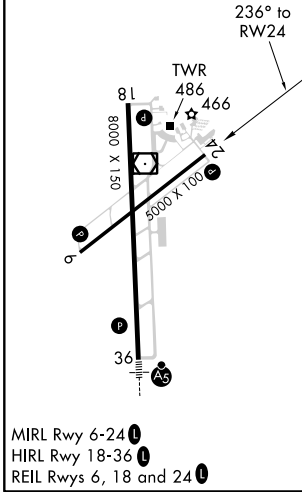
⚠ For uncompensated Baro-VNAV systems, LNAV/VNAV NA below -15°C (5°F) or above 54°C (130°F). DME/DME RNP-0.3 NA. Rwy 24 helicopter visibility reduction below 3/4 SM NA. When local altimeter setting not received, use Evansville altimeter setting: increase LPV DA to 712 feet and all Cats visibility 1/4 mile; increase LNAV/VNAV DA to 902 feet and all Cats visibility 1/4 mile; increase all MDA 60 feet and LNAV Cats C/D and Circling Cats C/D visibility 1/4 mile. Baro-VNAV and VDP NA when using Evansville altimeter setting.

MISSED APPROACH:
Climb to 3000 direct FOLAB and hold.

AWOS-3PT 119.025	EVANSVILLE APP CON * 124.025 290.9	OWENSBORO TOWER * 120.7 (CTAF) 251.15	GND CON 121.7	UNICOM 122.95
----------------------------	--	---	-------------------------	-------------------------



ELEV 407	D	TDZE 403
-----------------	----------	-----------------



CATEGORY	A	B	C	D
LPV DA		653-3/4	250 (300-3/4)	
LNAV/VNAV DA		843-1 1/2	440 (500-1 1/2)	
LNAV MDA	820-1	417 (500-1)	820-1 1/2 417 (500-1 1/2)	
CIRCLING	860-1 453 (500-1)	1120-1 713 (800-1)	1140-2 733 (800-2)	1140-2 1/4 733 (800-2 1/4)

SE-1, 09 SEP 2021 to 07 OCT 2021

SE-1, 09 SEP 2021 to 07 OCT 2021