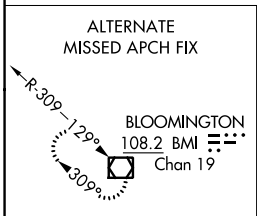
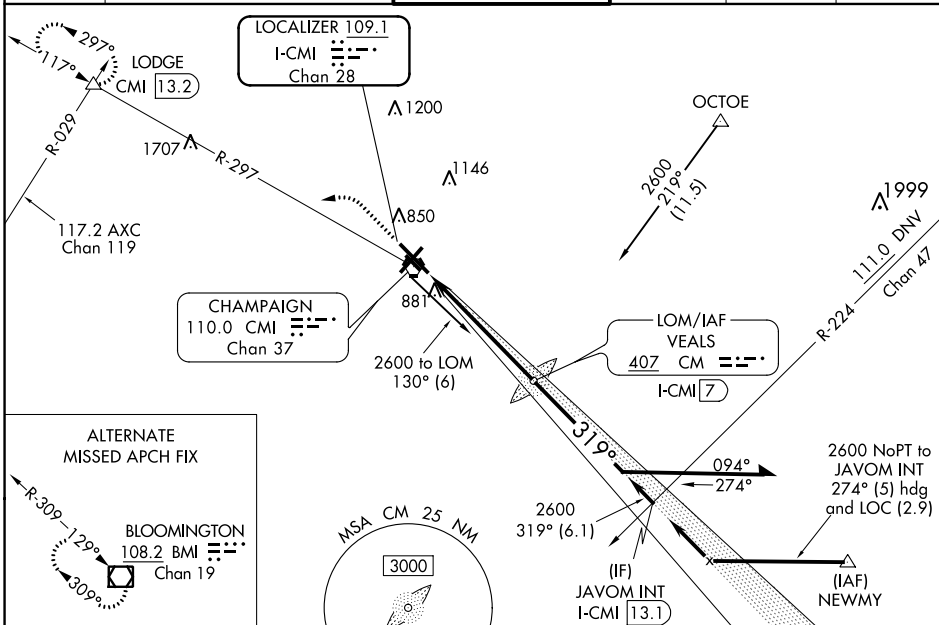


LOC/DME I-CMI <b>109.1</b> Chan 28	APP CRS <b>319°</b>	Rwy Idg <b>8101</b> TDZE <b>750</b> Apt Elev <b>755</b>
--	------------------------	---

**ILS or LOC RWY 32R**  
UNIVERSITY OF ILLINOIS-WILLARD (CMI)

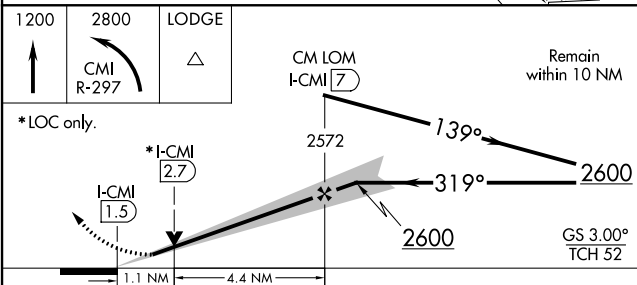
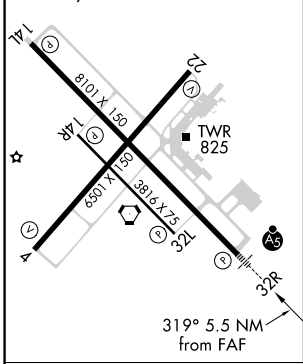
For inop ALS, increase S-LOC 32R Cat C and D visibility to RVR 6000. **RVR 1800 authorized with use of FD or AP or HUD to DA. ASR	MALS AS	MISSED APPROACH: Climb to 1200 then climbing left turn to 2800 on CMI VORTAC R-297 to LODGE INT/CMI VORTAC 13.2 DME and hold.
---	------------	---

ATIS <b>124.85</b>	CHAMPAIGN APP CON * <b>121.35 285.65</b> (319°-138°) <b>132.85 290.225</b> (139°-318°)	CHAMPAIGN TOWER * <b>120.4 (CTAF) 0 229.4</b>	GND CON <b>121.8</b>	CLNC DEL <b>128.75</b>	UNICOM <b>122.95</b>
-----------------------	--	--	-------------------------	---------------------------	-------------------------



ELEV 755	<b>D</b>	TDZE 750
----------	----------	----------

HIRL Rwy 14L-32R  
MIRL Rwy 4-22  
MIRL Rwy 14R-32L



CATEGORY	A	B	C	D
S-ILS 32R **	950/24 200 (200-½)			
S-LOC 32R	1160/24	410 (500-½)	1160/40	410 (500-¾)
<b>C</b> CIRCLING	1240-1	485 (500-1)	1500-2¼ 745 (800-2¼)	1500-2½ 745 (800-2½)

FAF to MAP 5.5 NM					
Knots	60	90	120	150	180
Min:Sec	5:30	3:40	2:45	2:12	1:50

EC-3, 09 SEP 2021 to 07 OCT 2021

EC-3, 09 SEP 2021 to 07 OCT 2021