

LOM CM <b>407</b>	APP CRS <b>319°</b>	Rwy Idg TDZE Apt Elev	<b>8101</b> <b>750</b> <b>755</b>
----------------------	------------------------	-----------------------------	---

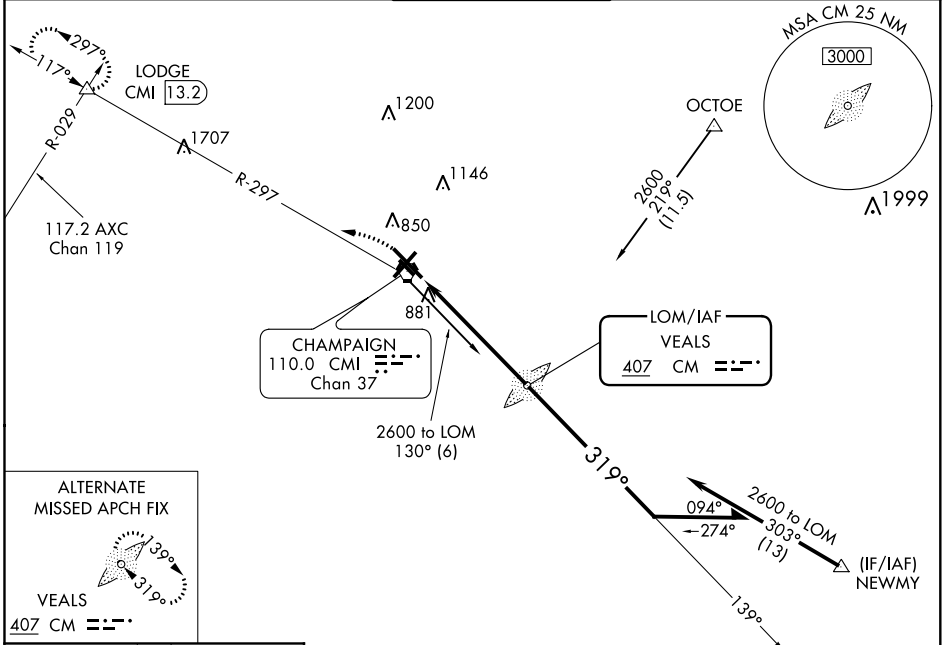
# NDB RWY 32R

UNIVERSITY OF ILLINOIS-WILLARD (CMI)

**ASR** When local altimeter setting not received, use Rantoul altimeter setting and increase all MDA 60 feet. Increase S-32R Cat C visibility to RVR 5000 and Cat D visibility to 1½ mile.

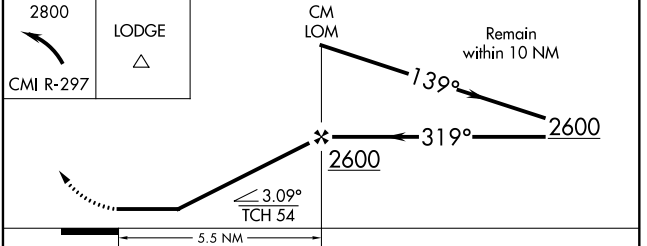
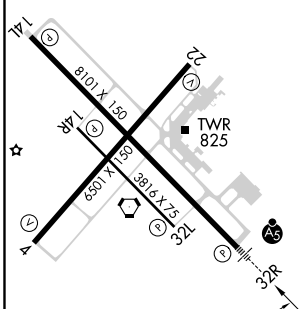
**MALS** MISSED APPROACH: Climbing left turn to 2800 on CMI VORTAC R-297 to LODGE INT/CMI 13.2 DME and hold.

ATIS <b>124.85</b>	CHAMPAIGN APP CON * <b>121.35 285.65</b> (319°-138°) <b>132.85 290.225</b> (139°-318°)	CHAMPAIGN TOWER * <b>120.4 (CTAF) 229.4</b>	GND CON <b>121.8</b>	CLNC DEL <b>128.75</b>	UNICOM <b>122.95</b>
-----------------------	--	--	-------------------------	---------------------------	-------------------------



ELEV 755	<b>D</b>	TDZE 750
----------	----------	----------

HIRL Rwy 14L-32R  
MIRL Rwy 4-22  
MIRL Rwy 14R-32L



CATEGORY	A	B	C	D
S-32R	1240/40 490 (500-¾)			1240/60 490 (500-1¼)
<b>C</b> CIRCLING	1240-1 485 (500-1)		1500-2¼ 745 (800-2¼)	1500-2½ 745 (800-2½)

CHAMPAIGN-URBANA, ILLINOIS  
Amdt 11A 05MAR15

40°02'N-88°17'W

# UNIVERSITY OF ILLINOIS-WILLARD (CMI) NDB RWY 32R

EC-3, 09 SEP 2021 to 07 OCT 2021

EC-3, 09 SEP 2021 to 07 OCT 2021