

VORTAC CMI 110.0 Chan 37	APP CRS 207°	Rwy Idg TDZE Apt Elev 6501 750 755
--	------------------------	--

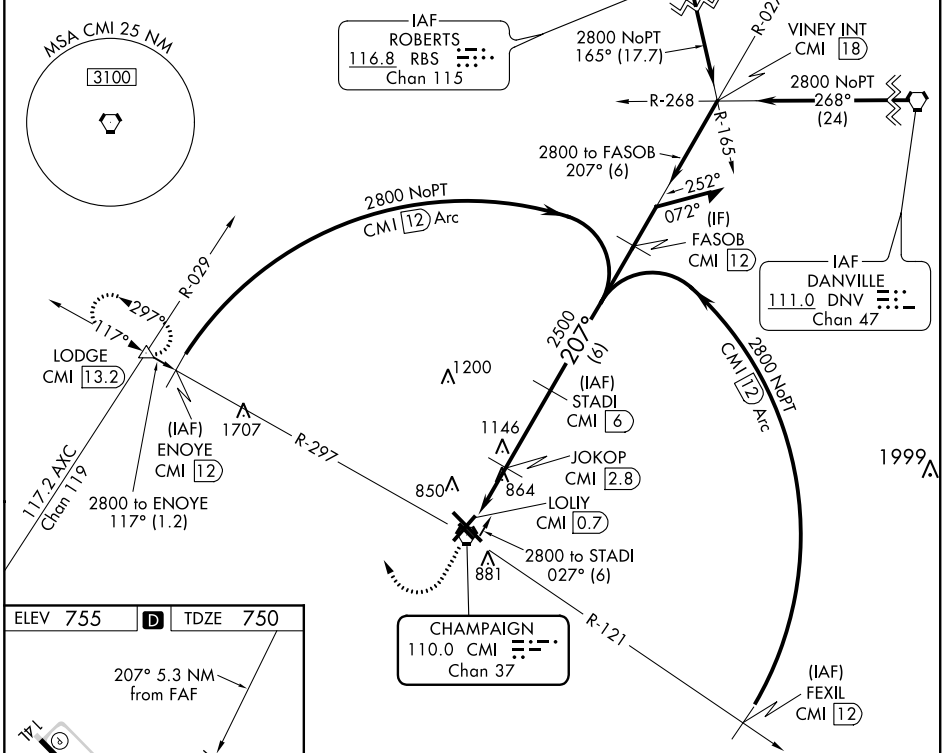
VOR RWY 22

UNIVERSITY OF ILLINOIS-WILLARD (CMI)

DME required.		MISSED APPROACH: Climb to 2800 then right turn heading 340° and CMI VOR R-297 to LODGE INT/CMI 13.2 DME and hold.			
Rwy 22 helicopter visibility reduction below 3/4 SM NA.					

ATIS 124.85	CHAMPAIGN APP CON * 121.35 285.65 (319°-138°) 132.85 290.225 (139°-318°)	CHAMPAIGN TOWER * 120.4 (CTAF) 229.4	GND CON 121.8	CLNC DEL 128.75	UNICOM 122.95
-----------------------	--	---	-------------------------	---------------------------	-------------------------

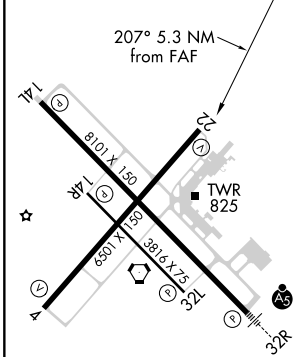
Procedure NA for arrivals at RBS VOR/DME on V191 northeast bound.



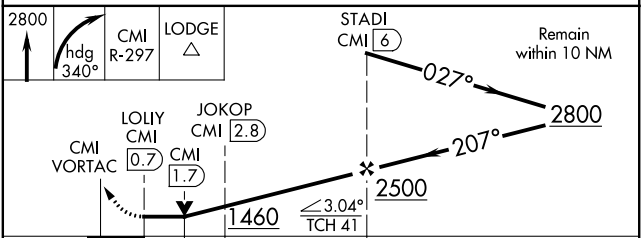
EC-3, 09 SEP 2021 to 07 OCT 2021

EC-3, 09 SEP 2021 to 07 OCT 2021

ELEV 755	D	TDZE 750
----------	----------	----------



HIRL Rwy 14L-32R 1
MIRL Rwy 4-22 1
MIRL Rwy 14R-32L



CATEGORY	A	B	C	D
S-22	1120-1	370 (400-1)		1120-1 1/4 370 (400-1 1/4)
C CIRCLING	1240-1	485 (500-1)	1500-2 1/4 745 (800-2 1/4)	1500-2 1/2 745 (800-2 1/2)