

KUSSO EIGHT DEPARTURE (RNAV)

SC-2, 09 SEP 2021 to 07 OCT 2021

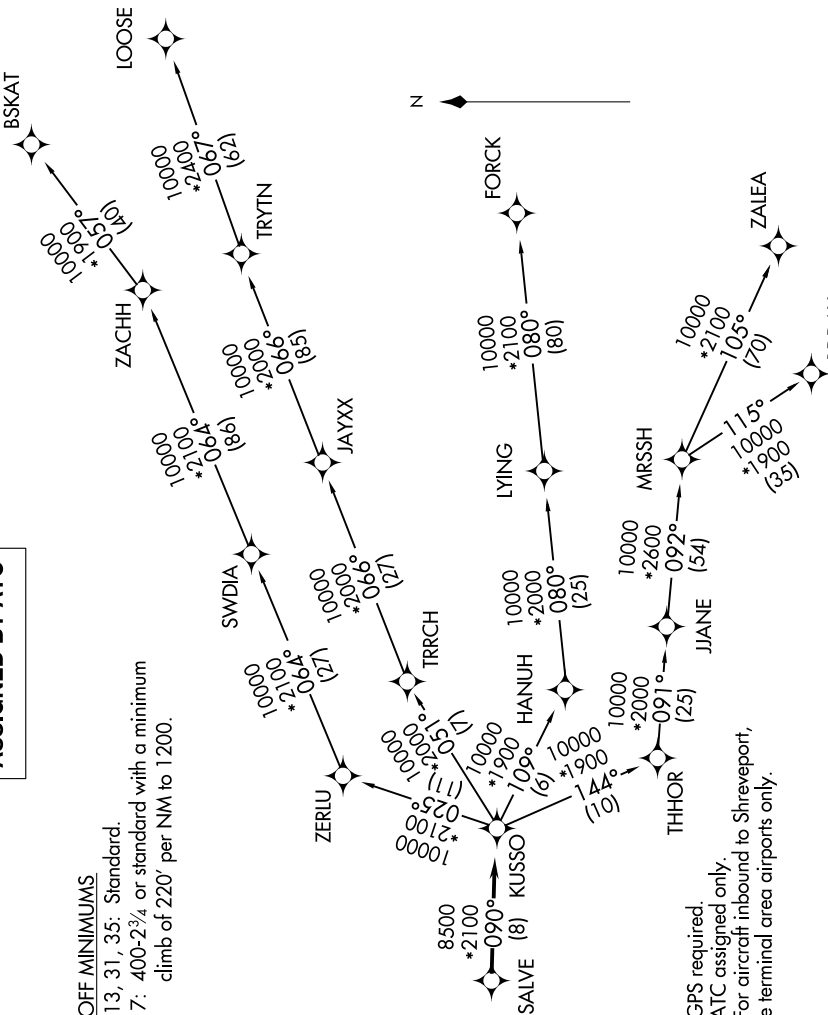
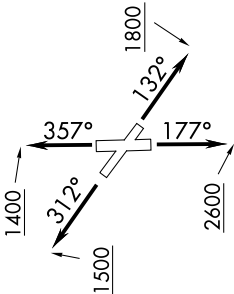
**TOP ALTITUDE:  
ASSIGNED BY ATC**

ATIS  
126.35  
CLINC DEL  
118.625  
GND CON  
119.475  
EXECUTIVE TOWER \*  
127.25 (CTAF)  
REGIONAL DEP CON  
125.2343.65

TAKEOFF MINIMUMS

Rwys 13, 31, 35: Standard.

Rwy 17: 400-2<sup>3</sup>/<sub>4</sub> or standard with a minimum climb of 220' per NM to 1200.



NOTE: RADAR required.  
NOTE: RNAV 1.  
NOTE: DME/DME/IRU or GPS required.  
NOTE: BDDAY transition: ATC assigned only.  
NOTE: MRSSH transition: For aircraft inbound to Shreveport, Jackson and Monroe terminal area airports only.

(NARRATIVE ON FOLLOWING PAGE)

NOTE: Chart not to scale.

SC-2, 09 SEP 2021 to 07 OCT 2021

KUSSO EIGHT DEPARTURE (RNAV)