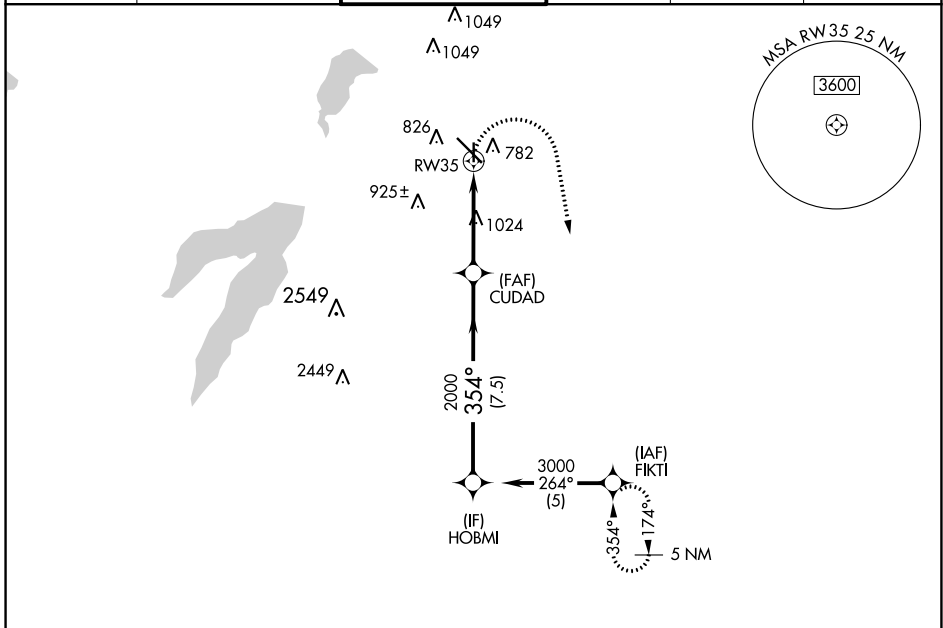


APP CRS 354°	Rwy Idg 3800
	TDZE 659
	Apt Elev 661

RNAV (GPS) RWY 35

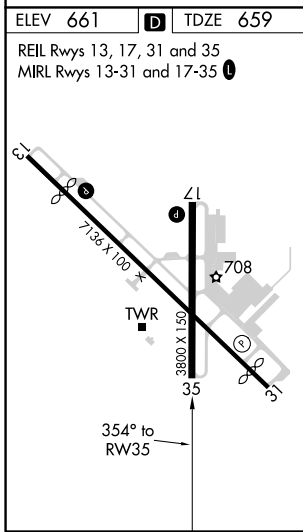
DALLAS EXEC (RBD)

RADAR required for procedure entry. RNP APCH.		MISSED APPROACH: Climbing right turn to 3000 direct FIKTI and hold.			
ATIS 126.35	REGIONAL APP CON 125.2 343.65	EXECUTIVE TOWER ★ 127.25 (CTAF) 0	GND CON 119.475	CLNC DEL 118.625	UNICOM 122.95



SC-2, 09 SEP 2021 to 07 OCT 2021

SC-2, 09 SEP 2021 to 07 OCT 2021



	3000	FIKTI		HOBMI
			CUADAD	
	1.8	2.2 NM	7.5 NM	
			2000	3000
			1.8 NM to RWY 35	
			3.04° TCH 45	
CATEGORY	A	B	C	D
LNAV MDA	1280-1	621 (700-1)	1280-1¾ 621 (700-¾)	1280-2 621 (700-2)
C CIRCLING	1280-1	619 (700-1)	1340-2 679 (700-2)	1400-2½ 739 (800-2½)