

APP CRS	Rwy Idg	3751
181°	TDZE	534
	Apt Elev	537

RNAV (GPS) RWY 18

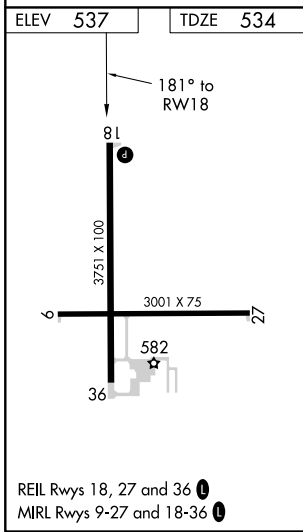
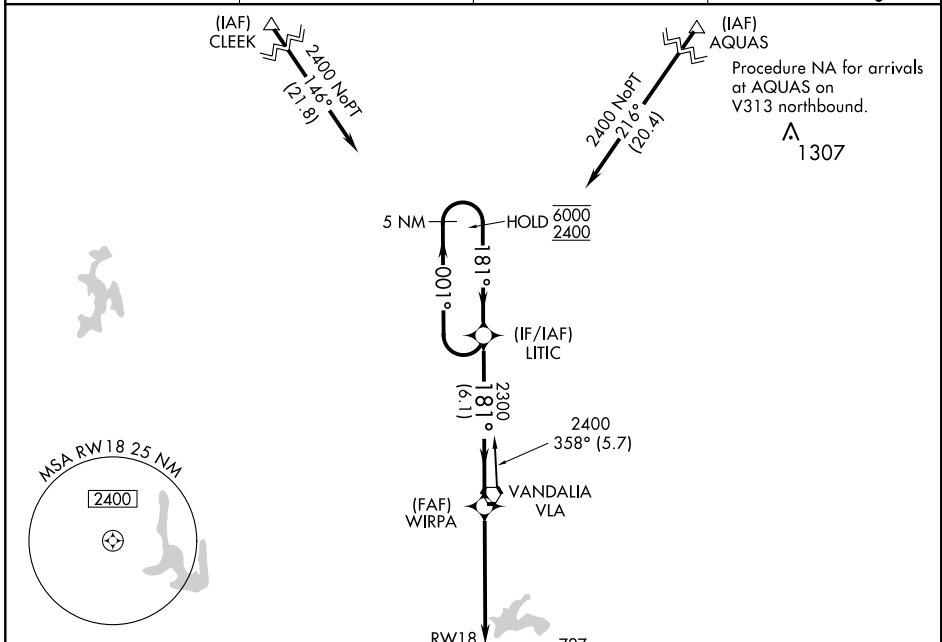
VANDALIA MUNI (VLA)

RNP APCH.

⚠ Rwy 18 helicopter visibility reduction below 3/4 SM NA. When local altimeter setting not received, use Salem altimeter setting and increase all MDAs 60 feet, increase LNAV Cats C/D and Circling Cat C visibility 1/4 SM.

MISSED APPROACH: Climb to 2400 direct SEYRO and hold.

AWOS-AV 122.8	SLO AWOS-3 118.525	KANSAS CITY CENTER 124.3 269.15	UNICOM 122.8 (CTAF) 0
-------------------------	------------------------------	---	---------------------------------



2400	SEYRO	VCSI and descent angles not coincident (VCSI Angle 3.00/TCH 20).	5 NM Holding Pattern	
↑	✦			
1.6 NM	3.8 NM	6.1 NM		
1.6 NM to RWY 18	WIRPA	LITIC		
181°	001°	6000	2400	
3.05° TCH 40	2300			
181°				
6000	2400			
CATEGORY	A	B	C	D
LNAV MDA	1060-1	526 (600-1)	1060-1½	526 (600-1½)
CIRCLING	1060-1	523 (600-1)	1060-1½	1140-2 523 (600-1½) 603 (700-2)

EC-3, 09 SEP 2021 to 07 OCT 2021

EC-3, 09 SEP 2021 to 07 OCT 2021