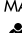



WAAS CH <b>69219</b> <b>W04A</b>	APP CRS <b>041°</b>	Rwy Idg TDZE Apt Elev	<b>5001</b> <b>270</b> <b>288</b>
--	------------------------	-----------------------------	---

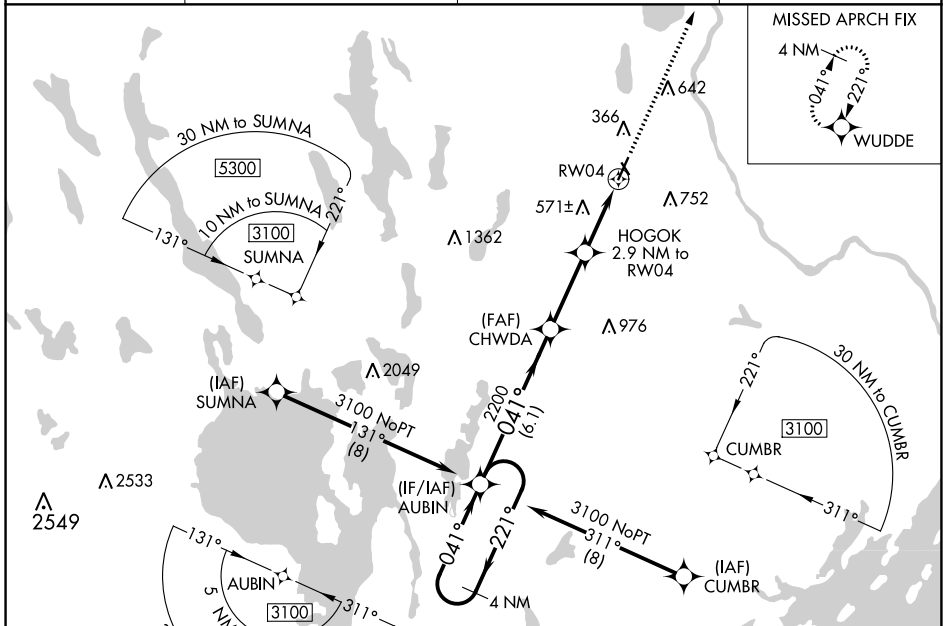
# RNAV (GPS) RWY 4

AUBURN/LEWISTON MUNI (LEW)


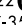

**⚠** Circling to Rwy 17, 22, 35 NA at night. For uncompensated Baro-VNAV systems, LNAV/VNAV NA below -16°C (4°F) or above 54°C (130°F). DME/DME RNP-0.3 NA. For inop ALS, increase visibility LNAV/VNAV all Cats to 1½ SM, LNAV Cat A/B to 1 SM and Cat C/D to 1½ SM. Rwy 04 helicopter visibility reduction below ¾ SM NA.

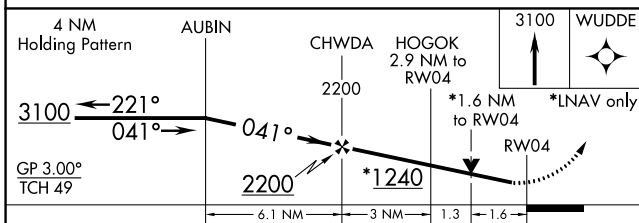
**MALS**  **MISSED APPROACH:**  
Climb to 3100 direct WUDDC and hold.

AWOS-3PT <b>118.025</b>	PORTLAND APP CON ★ <b>125.5 353.9</b>	PORTLAND CLNC DEL <b>124.05</b>	UNICOM <b>122.8 (CTAF)</b> 
----------------------------	--	------------------------------------	---

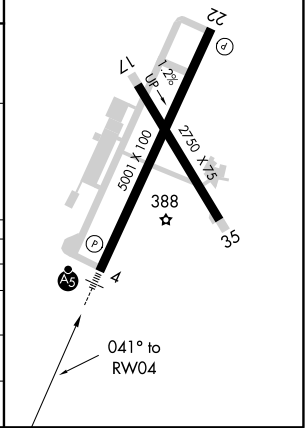


ELEV <b>288</b>	TDZE <b>270</b>
-----------------	-----------------

- REIL Rwy 22 
- HIRL Rwy 4-22 
- MIRL Rwy 17-35 



CATEGORY	A	B	C	D
LPV DA		470-½	200 (200-½)	
LNAV/VNAV DA		780-1	510 (500-1)	
LNAV MDA	840-¾	570 (600-¾)	840-1¼	570 (600-1¼)
<b>C</b> CIRCLING	840-1 552 (600-1)	920-1 632 (700-1)	1060-2¼ 772 (800-2¼)	1120-2¾ 832 (900-2¾)



NE-1, 09 SEP 2021 to 07 OCT 2021

NE-1, 09 SEP 2021 to 07 OCT 2021