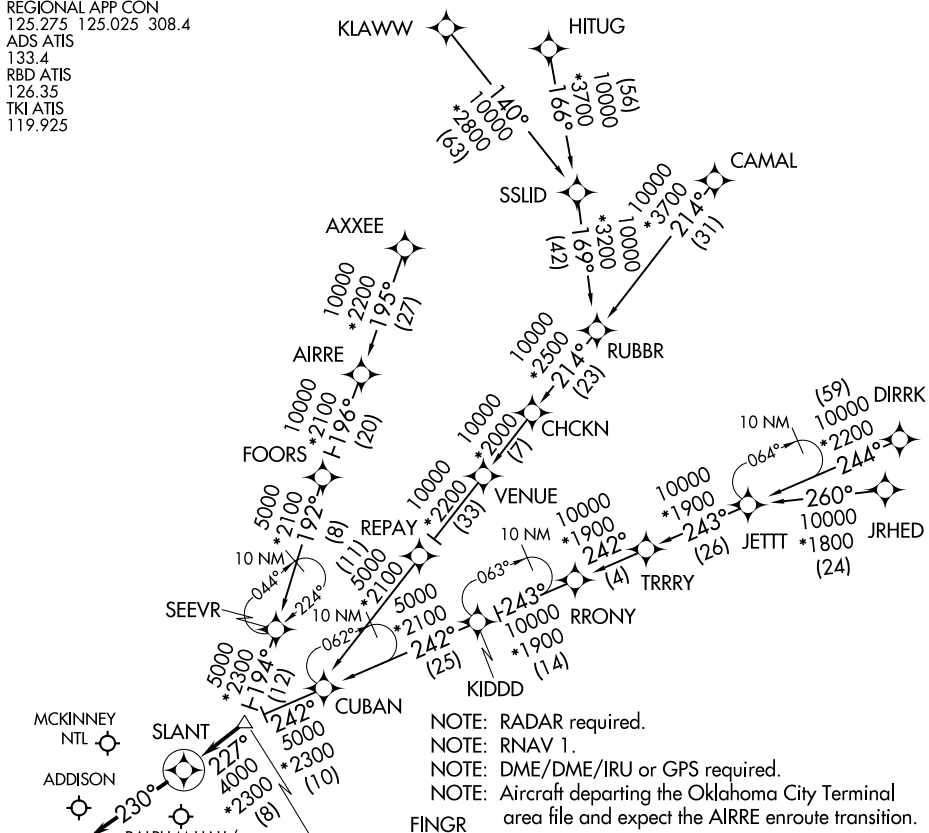


# SLANT THREE ARRIVAL (RNAV)

DALLAS, TEXAS

REGIONAL APP CON  
 125.275 125.025 308.4  
 ADS ATIS  
 133.4  
 RBD ATIS  
 126.35  
 TKI ATIS  
 119.925



NOTE: RADAR required.  
 NOTE: RNAV 1.  
 NOTE: DME/DME/IRU or GPS required.  
 NOTE: Aircraft departing the Oklahoma City Terminal area file and expect the AIRRE enroute transition.

**VERTICAL NAVIGATION**  
**PLANNING INFORMATION**  
 TURBOJETS: Expect 8000  
 PROPS: Expect 6000 or 7000

NOTE: Chart not to scale.

**ARRIVAL ROUTE DESCRIPTION**  
AIRRE TRANSITION (AIRRE.SLANT3): (For traffic filing FL190 and below.)  
AXXEE TRANSITION (AXXEE.SLANT3): (For aircraft filing FL230 and below.)  
CAMAL TRANSITION (CAMAL.SLANT3)  
DIRRK TRANSITION (DIRRK.SLANT3)  
HITUG TRANSITION (HITUG.SLANT3)  
JRHED TRANSITION (JRHEd.SLANT3): (ATC assigned only.)  
KLAWW TRANSITION (KLAWW.SLANT3)  
RRONY TRANSITION (RRONY.SLANT3): (For aircraft filing FL230 and below.)

From FINGR on track 227° to SLANT, then on track 230°.  
 Expect RADAR vectors to final approach course.

SC-2, 09 SEP 2021 to 07 OCT 2021

SC-2, 09 SEP 2021 to 07 OCT 2021

# SLANT THREE ARRIVAL (RNAV)

DALLAS, TEXAS