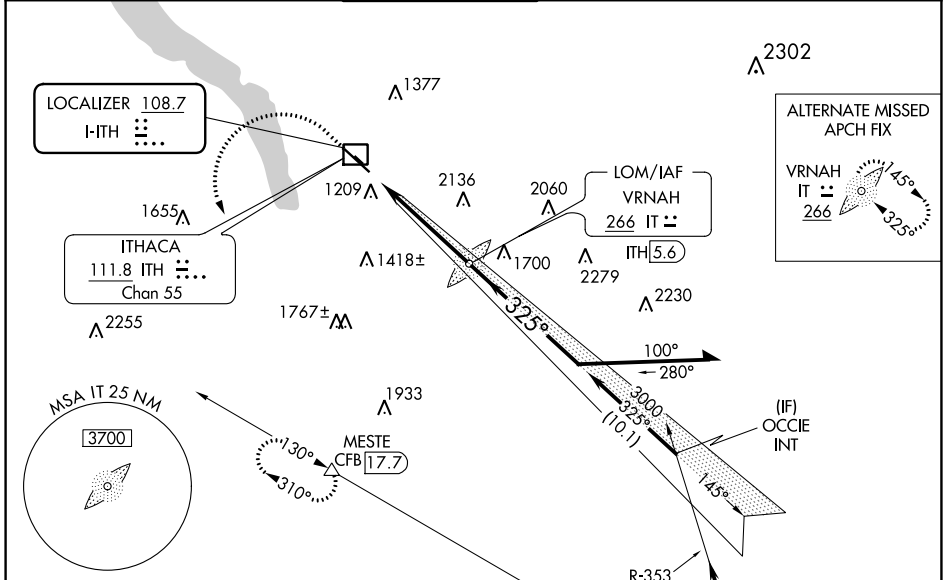


LOC I-ITH <b>108.7</b>	APP CRS <b>325°</b>	Rwy Idg TDZE Apt Elev	<b>6602</b> <b>1099</b> <b>1099</b>
---------------------------	------------------------	-----------------------------	---

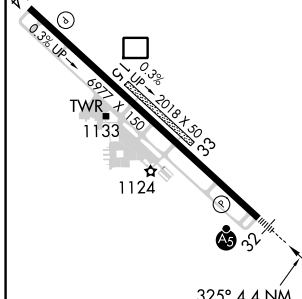
# ILS or LOC RWY 32

ITHACA TOMPKINS INTL (ITH)

DME required.		<p><b>MISSED APPROACH:</b> Climb to 2600 then climbing left turn to 4000 on heading 180° and CFB VOR/DME R-310 to MESTE/CFB VOR/DME 17.7 DME and hold.</p>	
<p><b>ILS</b> Circling NA to Rws 15 and 33. Inop table does not apply to S-ILS 32. When local altimeter setting not received, use Elmira altimeter setting and increase S-ILS 32 DA to 1433 feet and all MDA 100 feet; increase S-LOC 32 Cat C/D visibility ½ SM. DME from ITH DME. Simultaneous reception of I-ITH LOC and ITH DME required. For inop ALS when using Elmira altimeter setting increase S-ILS 32 all Cats visibility to RVR 5000.</p>		<p><b>MALSR</b> AS</p>	
ATIS <b>125.175</b>	ELMIRA APP CON ★ <b>124.3 257.8</b>	ITHACA TOWER ★ <b>119.6</b> (CTAF) <b>0</b>	GND CON <b>121.8</b>
CLNC DEL <b>121.8</b>		UNICOM <b>122.95</b>	



ELEV 1099	<b>D</b>	TDZE 1099
-----------	----------	-----------



<p>Procedure NA for arrival on CFB VOR/DME airway radials 275 CW 015 and V374 northwest bound.</p>	<p>2600 ↑ hdg 180°</p>	<p>4000 hdg 180°</p>	<p>CFB R-310</p>	<p>MESTE</p>	<p>VRNAH LOM ITH 5.6</p>	<p>3500</p>	<p>2835</p>	<p>145°</p>	<p>3400</p>	<p>Remain within 10 NM</p>
<p>*LOC only.</p>										
<p>ITH 3.6</p>										
<p>3000</p>										
<p>GS 3.20° TCH 54</p>										
<p>2.9 NM      2 NM</p>										
CATEGORY	A		B		C		D			
S-ILS 32			1349/40		250 (300-¾)					
S-LOC 32	2140/40 1041 (1100-¾)		2140/55 1041 (1100-1)		2140-2½		1041 (1100-2½)			
<b>C</b> CIRCLING	2140-1¼ 1041 (1100-1¼)		2140-1½ 1041 (1100-½)		2140-3		2440-3			

NE-2, 09 SEP 2021 to 07 OCT 2021

NE-2, 09 SEP 2021 to 07 OCT 2021