

WAAS CH 62815 W32A	APP CRS 325°	Rwy Idg 6602 TDZE 1099 Aprt Elev 1099
--	------------------------	--

RNAV (GPS) RWY 32

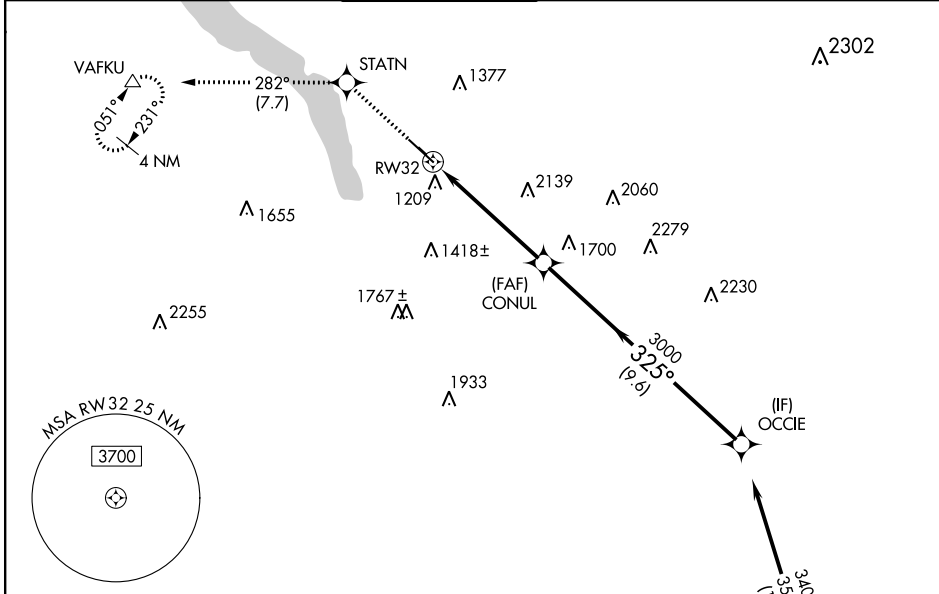
ITHACA TOMPKINS INTL (ITH)

RNP APCH

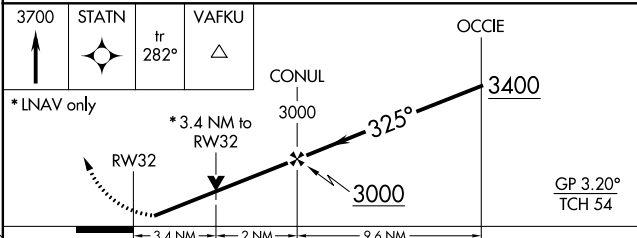
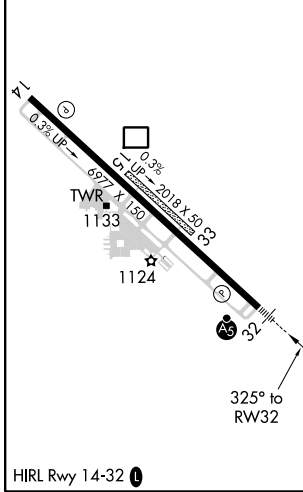
▼ Circling NA to Rwy 15 and 33. Inop table does not apply to LNAV Cat A. Rwy 32 helicopter visibility reduction below $\frac{3}{4}$ SM NA. When local altimeter setting not received, use **282°** -19°C Elmira altimeter setting and increase all DA 84 feet and all MDA 100 feet. For inop MALS, increase LNAV Cat B visibility $\frac{1}{4}$ mile. For inop MALS, when using Elmira altimeter setting, increase LPV all Cats visibility to RVR 6000, and increase LNAV Cat B visibility to $\frac{1}{2}$ mile.

MALS
AS
MISSED APPROACH:
Climb to 3700 direct STATN and on track 282° to VAFKU and hold.

ATIS 125.175	ELMIRA APP CON ★ 124.3 257.8	ITHACA TOWER ★ 119.6 (CTAF) 0	GND CON 121.8	CNCL DEL 121.8	UNICOM 122.95
------------------------	--	--	-------------------------	--------------------------	-------------------------



ELEV 1099	D	TDZE 1099
-----------	----------	-----------



CATEGORY	A	B	C	D
LPV DA	1385/40		286 (300- $\frac{3}{4}$)	
LNAV MDA	2300/60 1201 (1300-1 $\frac{1}{4}$)		2300-2 $\frac{1}{2}$ 1201 (1300-2 $\frac{1}{2}$)	
C CIRCLING	2300-1 $\frac{1}{4}$ 1201 (1300-1 $\frac{1}{4}$)		2300-3 1341 (1400-3)	

NE-2, 09 SEP 2021 to 07 OCT 2021

NE-2, 09 SEP 2021 to 07 OCT 2021