

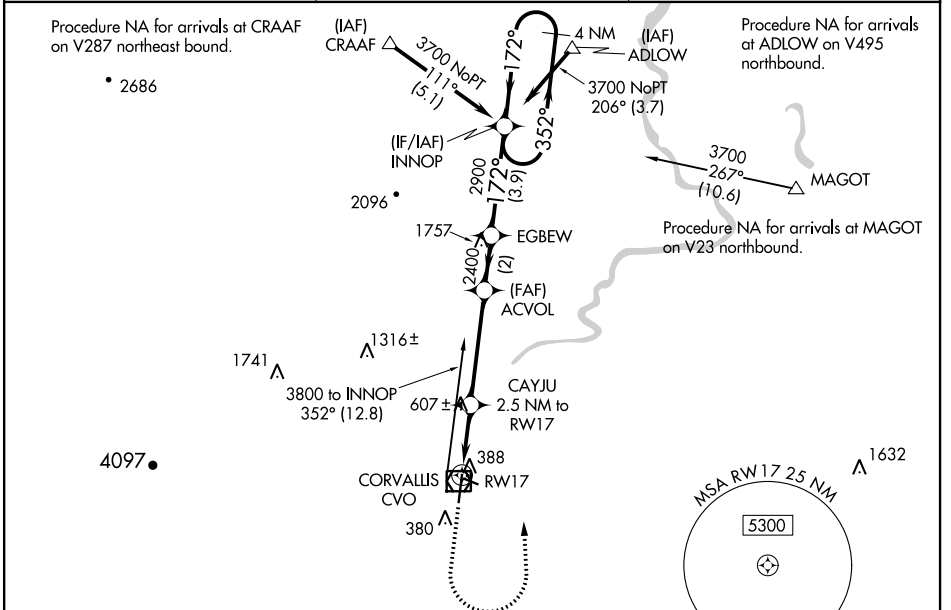
WAAS CH 78311 W17A	APP CRS 172°	Rwy Idg TDZE 248 Apt Elev 250
--	------------------------	---

RNAV (GPS) RWY 17

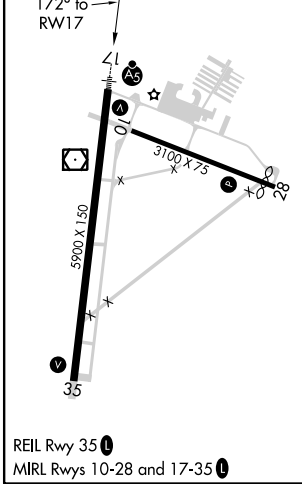
CORVALLIS MUNI (CVO)

<p>NA For uncompensated Baro-VNAV systems, LNAV/VNAV NA below -15°C (5°F) or above 54°C (130°F). DME/DME RNP-0.3 NA. For inop ALS, increase LNAV/VNAV all Cats visibility to 1 SM and increase LNAV Cat C/D visibility to 1½ mile.</p>	<p>MALSR</p>	<p>MISSED APPROACH: Climb to 1100 then climbing left turn to 3700 direct INNOP and hold, continue climb-in-hold to 3700.</p>
---	--------------	--

AWOS-3PT 135.775	CASCADE APP CON * 127.5 348.7	UNICOM 123.075 (CTAF)
----------------------------	---	---------------------------------



ELEV 250	D	TDZE 248
----------	----------	----------



1100	3700	INNOP	VGSi and RNAV glidepath not coincident (VGSi Angle 3.00/TCH 45).			
*LNAV only	CAYJU 2.5 NM to RWY17	ACVOL	EGBEW	INNOP	4 NM Holding Pattern	
1.8 NM to RWY17	1080	2400	2900	3700	GP 3.00° TCH 45	
1.8 NM	0.7	4.1 NM	2 NM	3.9 NM		
CATEGORY	A	B	C	D		
LPV DA		448-½	200 (200-½)			
LNAV/VNAV DA		571-5/8	323 (400-5/8)			
LNAV MDA	860-½	612 (700-½)	860-13/8	612 (700-13/8)		
C CIRCLING	860-1	610 (700-1)	920-13/4 670 (700-13/4)	1080-23/4 830 (900-23/4)		

NW-1, 09 SEP 2021 to 07 OCT 2021

NW-1, 09 SEP 2021 to 07 OCT 2021