

WAAS CH <b>69517</b> <b>W35A</b>	APP CRS <b>352°</b>	Rwy Idg TDZE Apt Elev	<b>5900</b> <b>250</b> <b>250</b>
----------------------------------------	------------------------	-----------------------------	-----------------------------------------

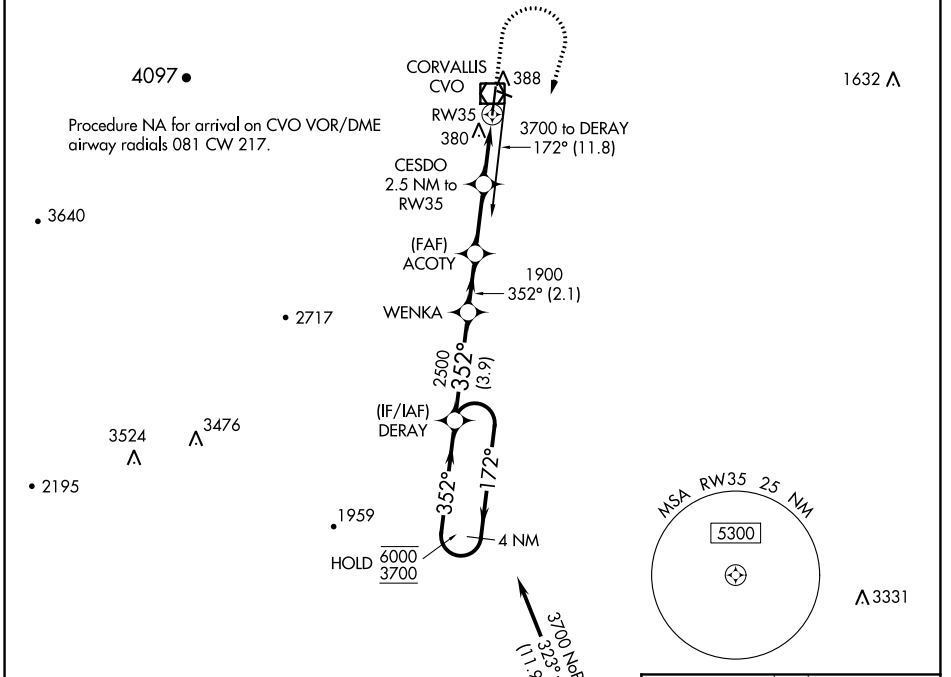
# RNAV (GPS) RWY 35

CORVALLIS MUNI (CVO)

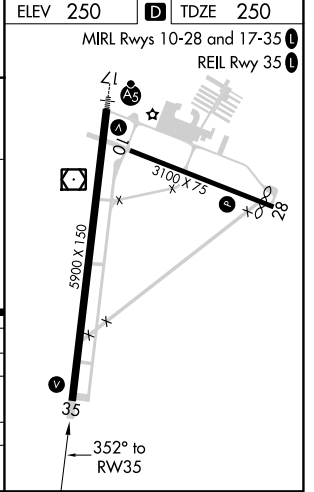
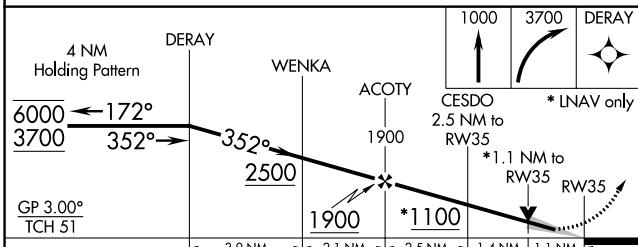
RNP APCH. For uncompensated Baro-VNAV systems, LNAV/VNAV NA below -1.5°C or above 54°C. When local altimeter setting not received, procedure NA.

MISSED APPROACH: Climb to 1000 then climbing right turn to 3700 direct DERAY and hold, continue climb-in-hold to 3700.

AWOS-3PT <b>135.775</b>	CASCADE APP CON * <b>127.5 348.7</b>	UNICOM <b>123.075 (CTAF) ①</b>
----------------------------	-----------------------------------------	-----------------------------------



Procedure NA for arrival on EUG VORTAC airway radials 292 CW 015.



CATEGORY	A	B	C	D
LPV DA	500-¾		250 (300-¾)	
LNAV/VNAV DA	551-⅞		301 (400-⅞)	
LNAV MDA	640-1 390 (400-1)		640-1½ 390 (400-1½)	
CRCLING	720-1 470 (500-1)		920-1¾ 1080-2¾ 670 (700-1¾) 830 (900-2¾)	

NW-1, 09 SEP 2021 to 07 OCT 2021

NW-1, 09 SEP 2021 to 07 OCT 2021