

|  |                        |   |             |
|--|------------------------|---|-------------|
| WAAS<br>CH <b>97421</b><br><b>W05A</b> | APP CRS<br><b>053°</b> | Rwy Idg<br>TDZE <b>124</b><br>Apt Elev <b>125</b> | <b>5342</b> |
|--|------------------------|---|-------------|

# RNAV (GPS) RWY 5

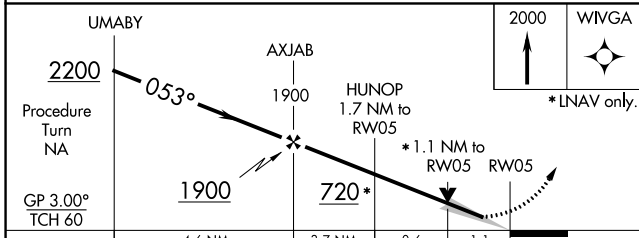
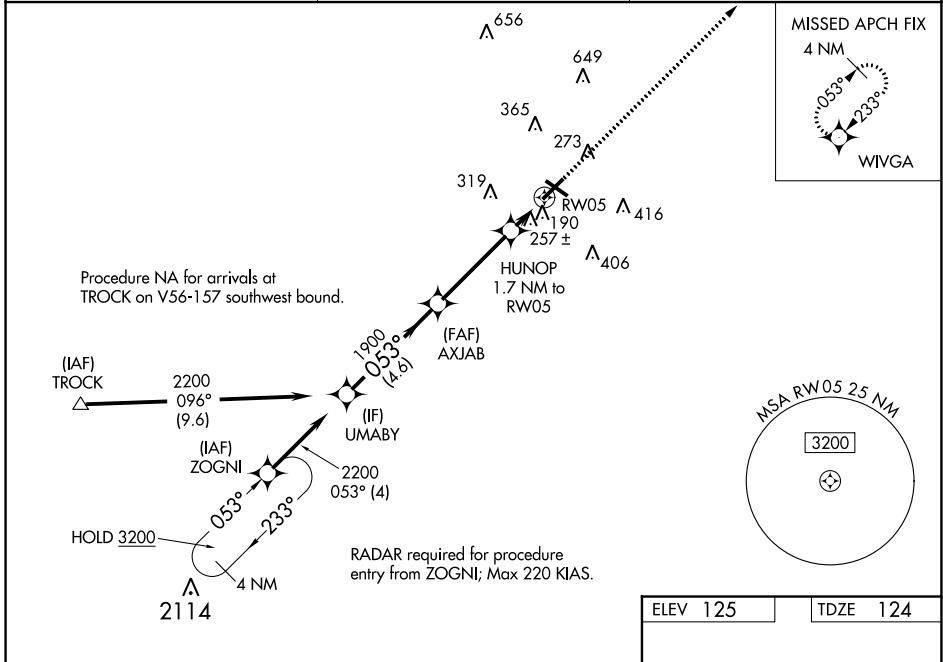
LUMBERTON RGNL (LBT)

RNP APCH - GPS.

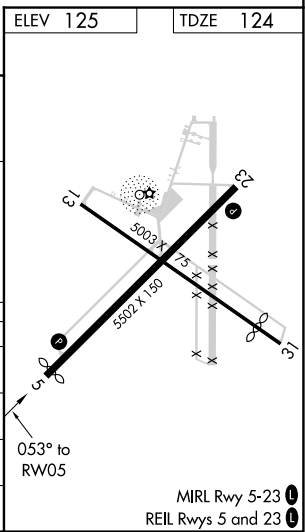
**⚠** When local altimeter setting not received, use Maxton altimeter setting: increase LPV DA to 383 feet; LNAV/VNAV DA to 594 feet and all visibility  $\frac{1}{4}$  SM; increase all MDAs 60 feet and LNAV visibility Cat C and Circling Cat C  $\frac{1}{4}$  SM. Baro-VNAV and VDP NA when using Maxton altimeter setting. Circling Rwy 13, 31 NA at night. For uncompensated Baro-VNAV systems, LNAV/VNAV NA below -15°C or above 54°C.

**MISSED APPROACH:**  
Climb to 2000 direct WIVGA and hold.

|                        |   |                               |
|------------------------|---|-------------------------------|
| ASOS<br><b>134.775</b> | FAYETTEVILLE APP CON<br><b>133.0 290.25</b> | UNICOM<br><b>122.8 (CTAF)</b> |
|------------------------|---|-------------------------------|



| CATEGORY     | A                   | B                          | C   | D  |
|--------------|---------------------|----------------------------|---|----|
| LPV DA       | 327- $\frac{3}{4}$  | 203 (300- $\frac{3}{4}$ )  |   | NA |
| LNAV/VNAV DA | 538-1 $\frac{1}{8}$ | 414 (500-1 $\frac{1}{8}$ ) |   | NA |
| LNAV MDA     | 520-1               | 396 (400-1)                | 520-1 $\frac{1}{8}$<br>396 (400-1 $\frac{1}{8}$ ) | NA |
| CIRCLING     | 660-1               | 535 (600-1)                | 720-1 $\frac{1}{2}$<br>595 (600-1 $\frac{1}{2}$ ) | NA |



SE-2, 09 SEP 2021 to 07 OCT 2021

SE-2, 09 SEP 2021 to 07 OCT 2021