

LOC I-GGG	APP CRS	Rwy Idg	<b>9200</b>
<b>109.5</b>	<b>131°</b>	TDZE	<b>358</b>
		Apt Elev	<b>365</b>

# ILS or LOC RWY 13

EAST TEXAS RGNL (GGG)

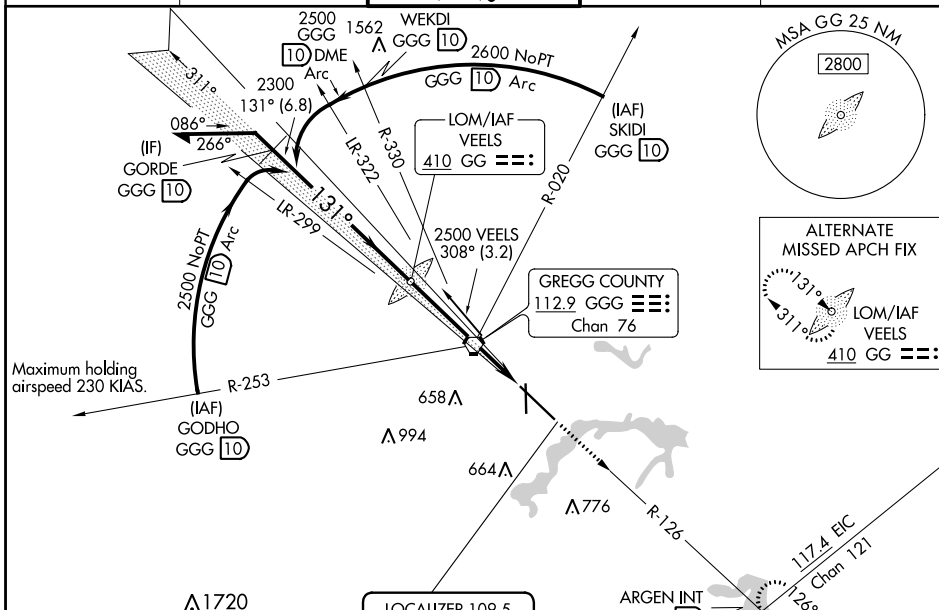
ADF or DME required for procedure entry.

▼ For inop ALS, increase S-ILS 13 Cat E visibility to RVR 4000, S-LOC 13 Cat C/D/E visibility to 1 3/8 SM. When local altimeter setting not received use Gilmer altimeter setting and increase DA 59 feet, all MDA 60 feet, increase LOC and Circling Cat C/D/E visibility 1/4 SM. For inop ALS when using Gilmer altimeter setting increase S-ILS 13 all Cats to RVR 4500, S-LOC 13 Cat C/D/E visibility to 1 3/8 SM. \* RVR 1800 authorized with the use of FD or AP or HUD to DA (NA when using Gilmer altimeter setting).

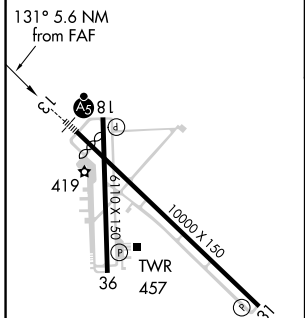


MISSED APPROACH:  
Climb to 3000 via GGG VORTAC R-126 to ARGEN Int/GGG 14 DME and hold.

ATIS	LONGVIEW APP CON *	EASTEX TOWER *	GND CON	UNICOM
<b>119.65</b>	<b>128.75 379.15</b>	<b>119.2 (CTAF) 0377.05</b>	<b>121.6</b>	<b>122.95</b>



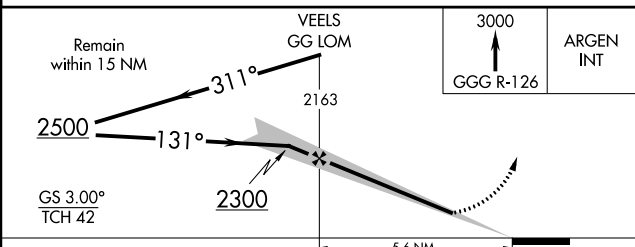
ELEV	<b>365</b>	TDZE	<b>358</b>
------	------------	------	------------



HIRL Rwy 13-31  
MIRL Rwy 18-36

FAF to MAP 5.6 NM

Knots	60	90	120	150	180
Min:Sec	5:36	3:44	2:48	2:14	1:52



CATEGORY	A	B	C	D	E
S-ILS 13	*558/24				558/24 200 (200-1/2)
S-LOC 13	860/24	502 (500-1/2)	860/50	502 (500-1)	860/60 502 (500-1/4)
CIRCLING	860-1	495 (500-1)	980-1 3/4 614 (700-1 3/4)	1080-2 1/4 714 (800-2 1/4)	1080-2 1/2 715 (800-2 1/2)

SC-2, 09 SEP 2021 to 07 OCT 2021

SC-2, 09 SEP 2021 to 07 OCT 2021