

WAAS CH <b>53504</b> <b>W31A</b>	APP CRS <b>311°</b>	Rwy Idg TDZE Apt Elev	<b>9200</b> <b>354</b> <b>365</b>
--	------------------------	-----------------------------	---

# RNAV (GPS) RWY 31

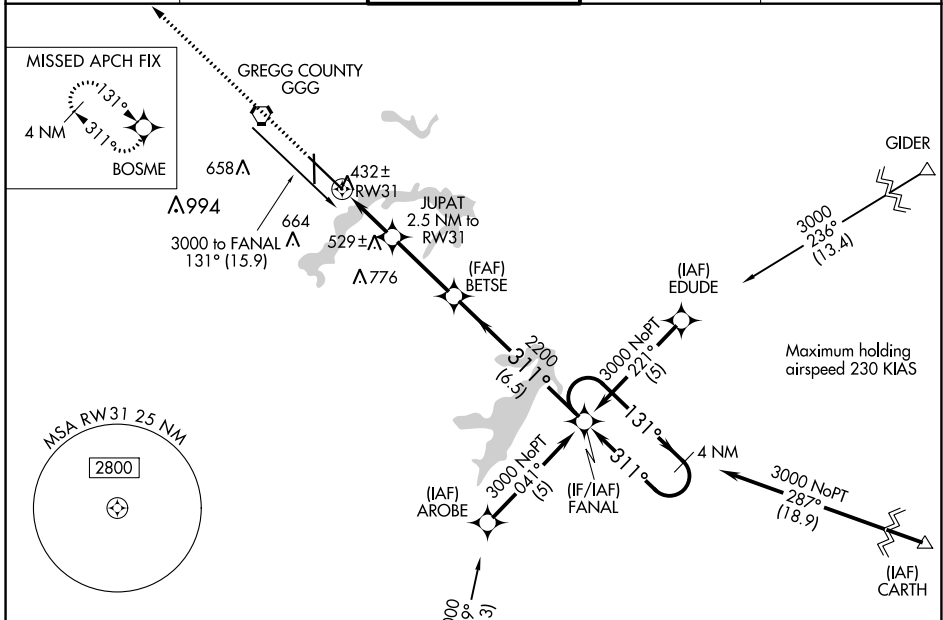
EAST TEXAS RGNL (GGG)

RNP APCH - GPS

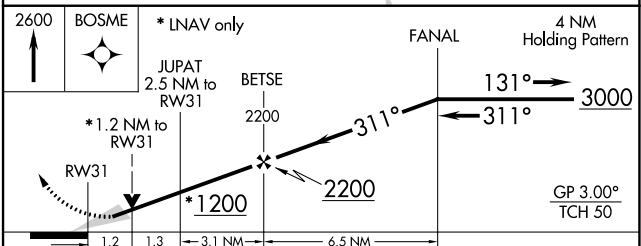
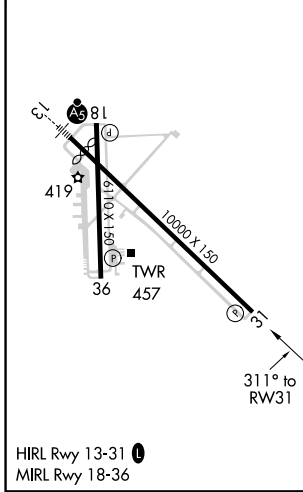
▼ Baro-VNAV NA when using Gilmer altimeter setting. For uncompensated Baro-VNAV systems, LNAV/VNAV NA below -15°C or above 48°C. VDP NA when using Gilmer altimeter setting. When local altimeter setting not received, use Gilmer altimeter setting and increase all DA 59 feet, all MDA 60 feet. Increase all LPV and LNAV/VNAV visibilities 1/8 SM and Circling Cats C/D/E visibilities 1/4 SM.

MISSED APPROACH: Climb to 2600 direct BOSME and hold.

ATIS <b>119.65</b>	LONGVIEW APP CON* <b>128.75 379.15</b>	EASTEX TOWER* <b>119.2 (CTAF) 0377.05</b>	GND CON <b>121.6</b>	UNICOM <b>122.95</b>
-----------------------	---	--	-------------------------	-------------------------



ELEV 365	<b>D</b>	TDZE 354
----------	----------	----------



CATEGORY	A	B	C	D	E
LPV DA		604-3/4		250 (300-3/4)	
LNAV/VNAV DA	682-1/4 328 (400-1/4)				
LNAV MDA	800-1	446 (500-1)	800-1/4 446 (500-1/4)	800-1/2 446 (500-1/2)	
CIRCLING	860-1	495 (500-1)	980-1/4 614 (700-1/4)	1080-2/4 714 (800-2/4)	1080-2/2 715 (800-2/2)

SC-2, 09 SEP 2021 to 07 OCT 2021

SC-2, 09 SEP 2021 to 07 OCT 2021