

VOR/DME OTB <b>109.8</b> Chan <b>35</b>	APP CRS <b>023°</b>	Rwy Idg TDZE Apt Elev	<b>N/A</b> <b>N/A</b> <b>347</b>
-----------------------------------------------	------------------------	-----------------------------	----------------------------------------

# COPTER VOR 023°

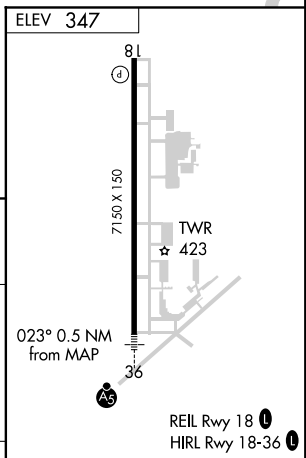
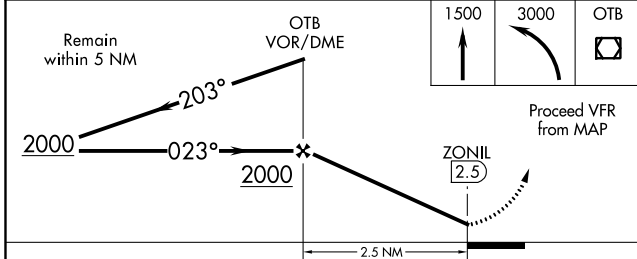
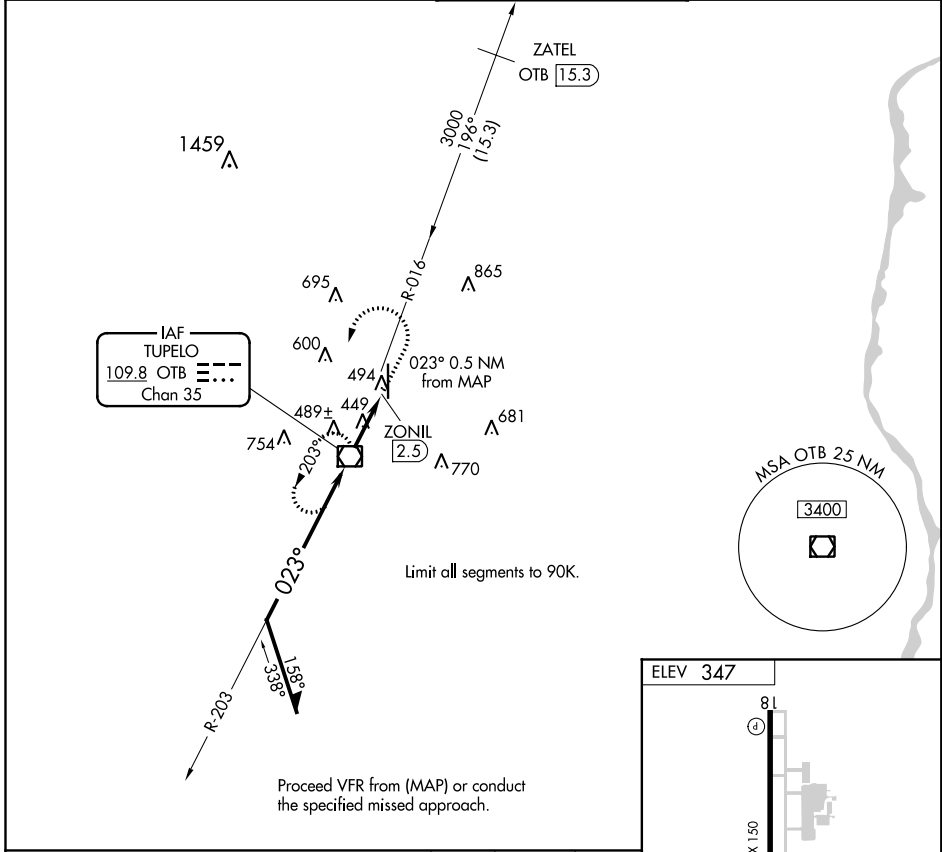
TUPELO RGNL (TUP)

RADAR required for procedure entry. DME required.

When local altimeter setting not received, use Columbus AFB altimeter setting and increase MDA 120 feet.

MISSED APPROACH: Climb to 1500 then climbing left turn 3000 direct OTB VOR/DME and hold.

ASOS <b>133.525</b>	MEMPHIS CENTER <b>128.5 279.55</b>	TUPELO TOWER* <b>118.775</b> (CTAF) <b>0 254.275</b>	GND CON <b>121.825 254.275</b>
------------------------	---------------------------------------	---------------------------------------------------------	-----------------------------------



CATEGORY	COPTER		FAF to MAP 2.5 NM					
H-023	700-1	353 (400-1)	Knots	45	60	75	90	105
			Min:Sec	3:20	2:30	2:00	1:40	1:26

SC-4, 09 SEP 2021 to 07 OCT 2021

SC-4, 09 SEP 2021 to 07 OCT 2021