

ROME, GEORGIA

AL-855 (FAA)

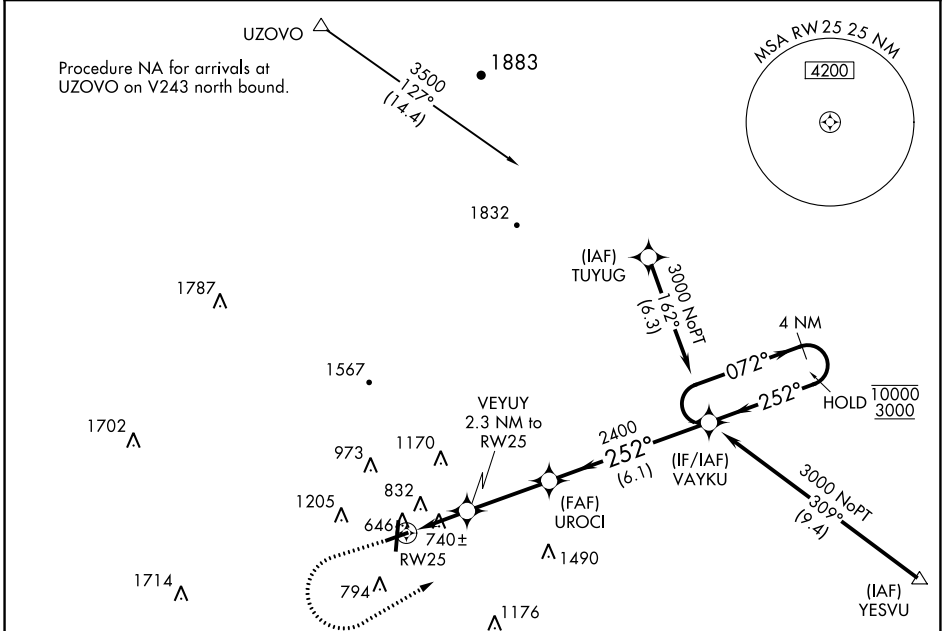
21168

WAAS CH <b>56542</b> <b>W25A</b>	APP CRS <b>252°</b>	Rwy Idg TDZE Apt Elev	<b>4495</b> <b>638</b> <b>644</b>
--	------------------------	-----------------------------	---

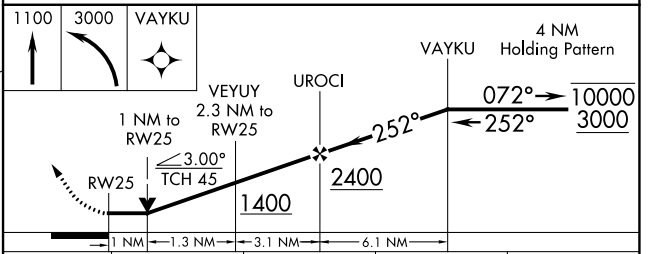
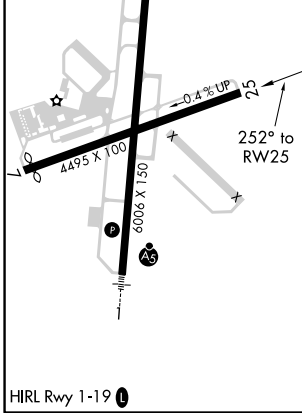
# RNAV (GPS) RWY 25

RICHARD B RUSSELL RGNL - J H TOWERS FLD (RMG)

RNP APCH.			MISSED APPROACH: Climb to 1100 then climbing left turn to 3000 direct VAYKU and hold.
<p>▼ Rwy 25 helicopter visibility reduction below ¼ SM NA.          ▲ Straight in minimums NA at night.          Circling NA northwest of Rwy 7 and 19.</p>			
ASOS <b>119.925</b>	ATLANTA CENTER <b>124.5 270.325</b>	GCO <b>121.725</b>	UNICOM <b>123.0 (CTAF) 0</b>



ELEV <b>644</b>	TDZE <b>638</b>
-----------------	-----------------



CATEGORY	A	B	C	D
LP MDA	1000-1 362 (400-1)			
LNAV MDA	1100-1	462 (500-1)	1100-1 <sup>3</sup> / <sub>8</sub>	462 (500-1 <sup>3</sup> / <sub>8</sub> )
CIRCLING	1140-1 496 (500-1)	1200-1 556 (600-1)	1480-2 <sup>1</sup> / <sub>2</sub> 836 (900-2 <sup>1</sup> / <sub>2</sub> )	1860-3 1216 (1300-3)

ROME, GEORGIA  
Amdt 1 13SEP18

RICHARD B RUSSELL RGNL - J H TOWERS FLD (RMG)

34°21'N-85°10'W

# RNAV (GPS) RWY 25

SE-4, 09 SEP 2021 to 07 OCT 2021

SE-4, 09 SEP 2021 to 07 OCT 2021