

APP CRS	Rwy Idg	<b>4380</b>
<b>057°</b>	TDZE	<b>644</b>
	Apt Elev	<b>644</b>

# RNAV (GPS) RWY 7

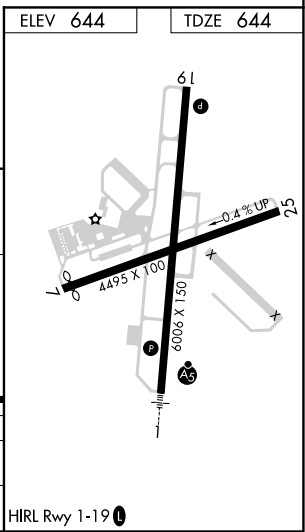
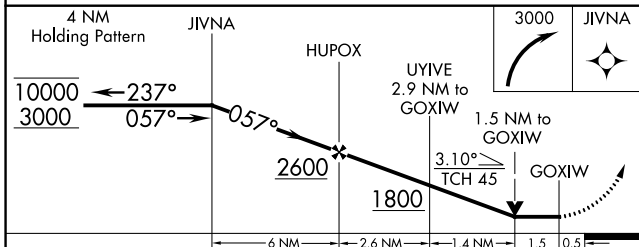
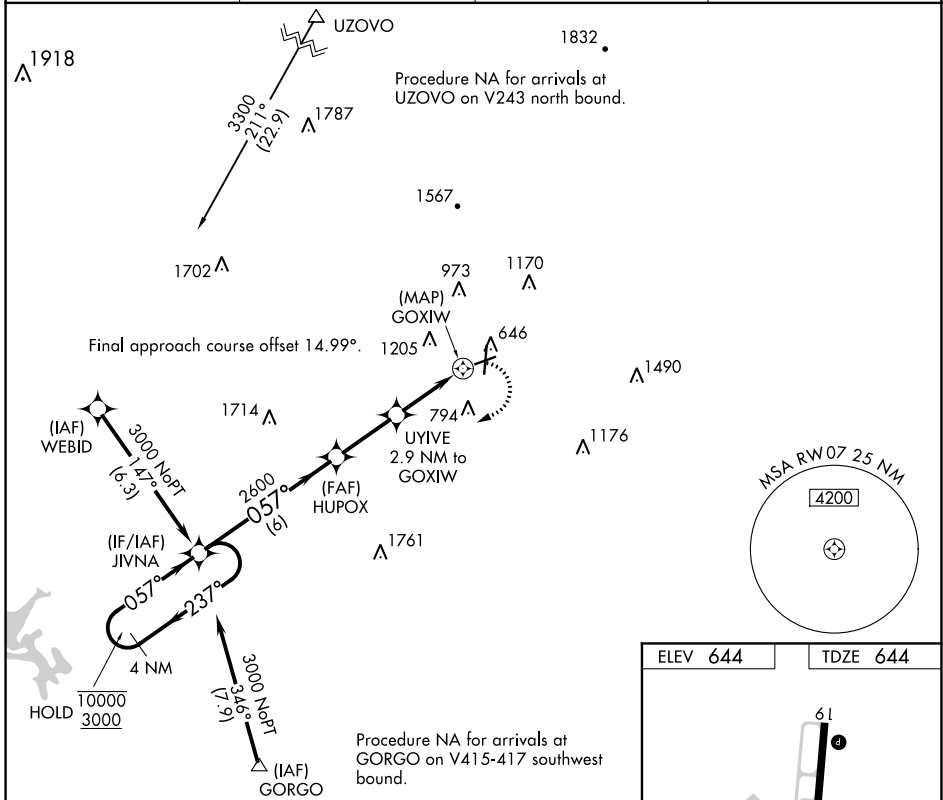
RICHARD B RUSSELL RGNL - J H TOWERS FLD (RMG)

RNP APCH.

**▼** Rwy 7 helicopter visibility reduction below 3/4 SM NA.  
**▲** Straight-in minimums NA at night.  
 Circling NA northwest of Rwys 7 and 19.

MISSED APPROACH: Climbing right turn to 3000 direct JIVNA and hold.

ASOS <b>119.925</b>	ATLANTA CENTER <b>124.5 270.325</b>	GCO <b>121.725</b>	UNICOM <b>123.0 (CTAF) 0</b>
------------------------	--	-----------------------	---------------------------------



CATEGORY	A	B	C	D
LNNAV MDA	1340-1	696 (700-1)	1340-2	696 (700-2)
<b>C</b> CIRCLING	1340-1	696 (700-1)	1480-2 1/2 836 (900-2 1/2)	1860-3 1216 (1300-3)

# RNAV (GPS) RWY 7

SE-4, 09 SEP 2021 to 07 OCT 2021

SE-4, 09 SEP 2021 to 07 OCT 2021