

WAAS CH <b>62901</b> <b>W05A</b>	APP CRS <b>051°</b>	Rwy Idg TDZE Apt Elev	<b>6002</b> <b>758</b> <b>782</b>
--	------------------------	-----------------------------	---

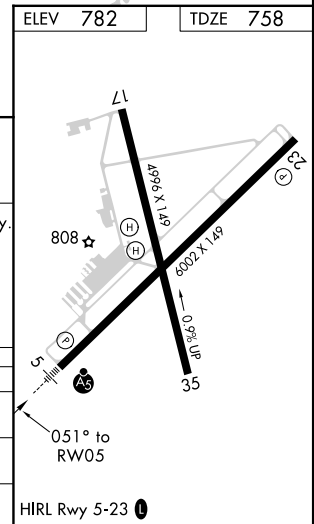
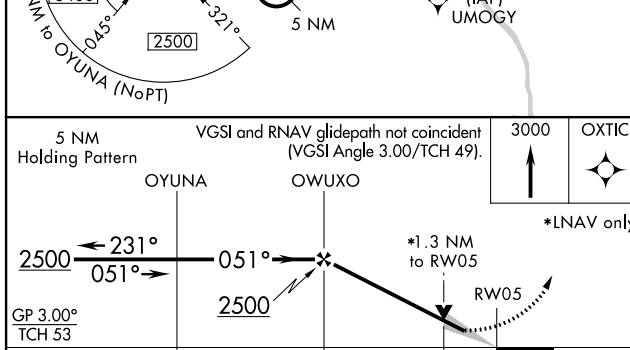
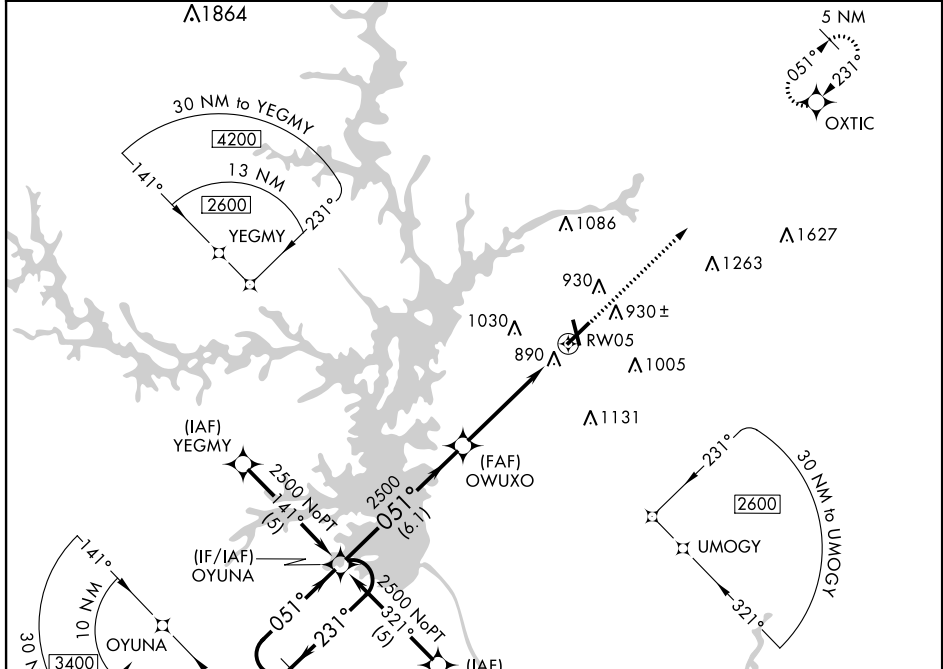
# RNAV (GPS) RWY 5

ANDERSON RGNL (A.ND)

**▼** If local altimeter setting not received, use Clemson altimeter setting and increase all DAs/MDAs 60 feet. DME/DME RNP-0.3 NA. Circling Rwy 17, 35 NA at night. 17, 35 helicopter visibility reduction below 1 SM NA.

**MALS**  MISSED APPROACH: Climb to 3000 direct OXTIC and hold.

ASOS <b>120.675</b>	GREER APP CON* <b>118.8 270.275</b>	CTAF <b>123.60</b>
------------------------	--	-----------------------



GP 3.00° TCH 53	5 NM Holding Pattern	VGSI and RNAV glidepath not coincident (VGSI Angle 3.00/TCH 49).	3000 OXTIC	
	OYUNA	OWUXO	*LNAV only.	
	← 231°	→ 051°		
	← 2500	→ 2500		
	← 6.1 NM	← 4 NM	← 1.3 NM	
CATEGORY	A	B	C	D
LPV DA	958-1/2		200 (200-1/2)	
LNAV MDA	1200-1/2	442 (500-1/2)	1200-3/4	1200-1
	478 (500-1)	538 (600-1)	442 (500-3/4)	442 (500-1)
<b>C</b> CIRCLING	1260-1	1320-1	1440-1 3/4	1500-2 1/4
	478 (500-1)	538 (600-1)	658 (700-1 3/4)	718 (800-2 1/4)

SE-2, 09 SEP 2021 to 07 OCT 2021

SE-2, 09 SEP 2021 to 07 OCT 2021