


VORTAC ELW <b>108.6</b> Chan 23	APP CRS <b>039°</b>	Rwy Idg 6002 TDZE 758 Apt Elev 782
---------------------------------------	------------------------	---

# VOR RWY 5

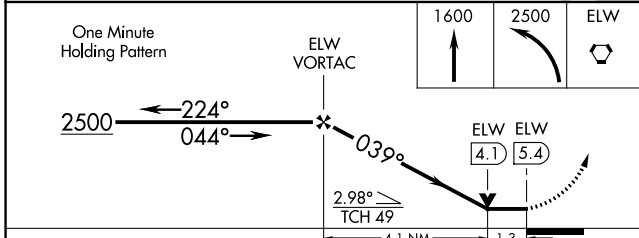
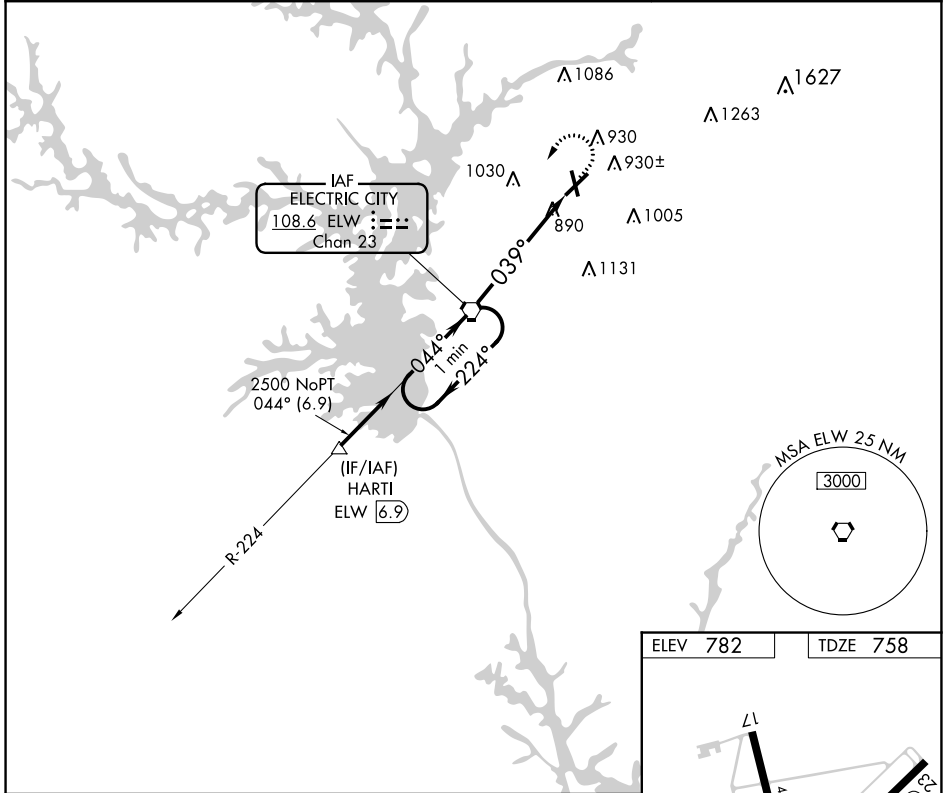
ANDERSON RGNL (A.ND)

⚠ If local altimeter setting not received, use Clemson altimeter setting and increase all MDAs 60 feet. VDP NA when using Clemson altimeter setting.  
 ⚠ Circling Rwy 17, 35 NA at night. 17, 35 helicopter visibility reduction below 1 SM NA.

MALSR  


MISSED APPROACH: Climb to 1600 then climbing left turn to 2500 direct ELW VORTAC and hold.

ASOS <b>120.675</b>	GREER APP CON ★ <b>118.8 270.275</b>	CTAF <b>123.6 0</b>
------------------------	---	------------------------



ELEV 782	TDZE 758
----------	----------

FAF to MAP 5.4 NM	Knots	60	90	120	150	180
Min:Seq	5:24	3:36	2:42	2:10	1:48	

SE-2, 09 SEP 2021 to 07 OCT 2021

SE-2, 09 SEP 2021 to 07 OCT 2021