

LOC/DME I-RAP <b>109.3</b> Chan <b>30</b>	APP CRS <b>324°</b>	Rwy Idg <b>8701</b> TDZE <b>3160</b> Apt Elev <b>3204</b>
---	------------------------	---

# ILS or LOC RWY 32

RAPID CITY RGNL (RAP)

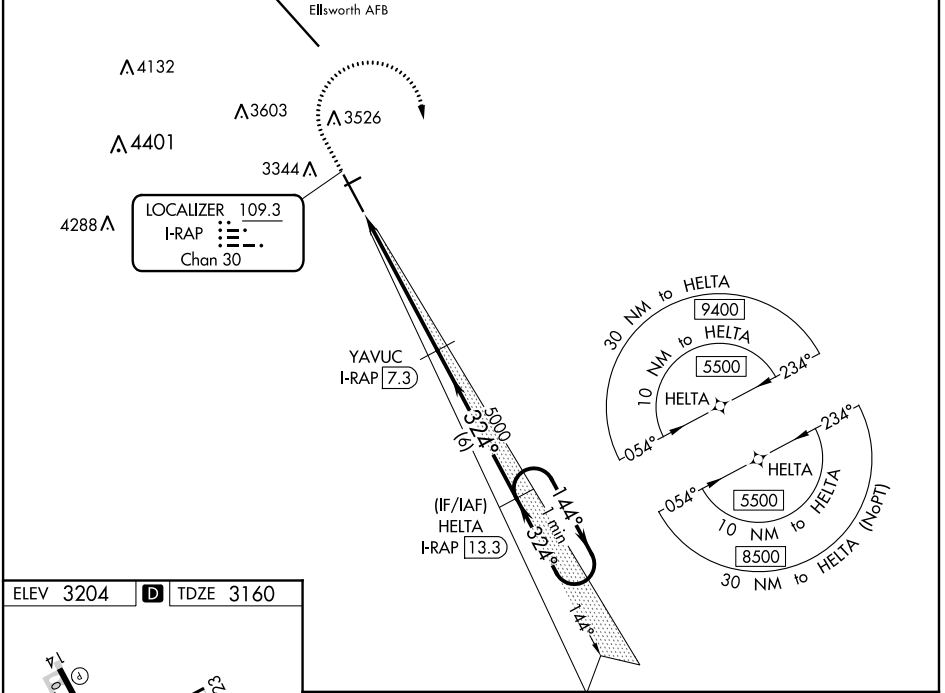
**⚠** DME and RNAV 1-GPS required. ILS glideslope unusable for coupled approaches below 3360. For inop ALS, increase S-ILS Cat E visibility to RVR 4000 and S-LOC Cat E visibility to 1 3/8 SM. # RVR 1800 authorized with use of FD or AP or HUD to DA.



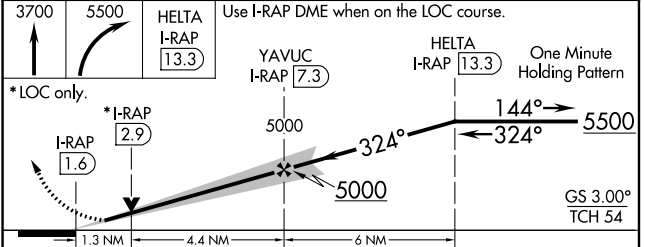
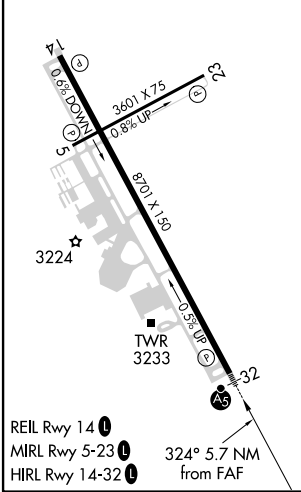
**MISSED APPROACH:** Climb to 3700 then climbing right turn to 5500 direct HELTA and hold.

ASOS <b>118.525</b>	ELLSWORTH APP CON ★ <b>119.5 259.1</b>	RAPID CITY TOWER ★ <b>125.85 (CTAF) 257.8</b>	GND CON <b>121.9</b>	UNICOM <b>122.95</b>
------------------------	---	--	-------------------------	-------------------------

## RNAV 1-GPS or RADAR REQUIRED



ELEV <b>3204</b>	<b>D</b>	TDZE <b>3160</b>
------------------	----------	------------------



3700	5500	HELTA I-RAP [13.3]	Use I-RAP DME when on the LOC course.		
*LOC only.		*I-RAP [2.9]	YAVUC I-RAP [7.3]	HELTA I-RAP [13.3]	One Minute Holding Pattern
*LOC only.		I-RAP [1.6]	5000	5000	5500
1.3 NM		4.4 NM	6 NM	GS 3.00° TCH 54	
CATEGORY	A	B	C	D	E
S-ILS 32 #	3360/24 200 (200-1/2)				
S-LOC 32	3620/24	460 (500-1/2)	3620/45	460 (500-7/8)	
<b>C</b> CIRCLING	3660-1 456 (500-1)	3840-1 636 (700-1)	3860-1 3/4 656 (700-1 3/4)	3940-2 1/4 736 (800-2 1/4)	3960-2 3/4 756 (800-2 3/4)

NC-1, 09 SEP 2021 to 07 OCT 2021

NC-1, 09 SEP 2021 to 07 OCT 2021