

WAAS CH <b>93717</b> <b>W32A</b>	APP CRS <b>324°</b>	Rwy Idg TDZE Apt Elev	<b>8701</b> <b>3160</b> <b>3204</b>
--	------------------------	-----------------------------	---

# RNAV (GPS) RWY 32

RAPID CITY RGNL (R.A.P)

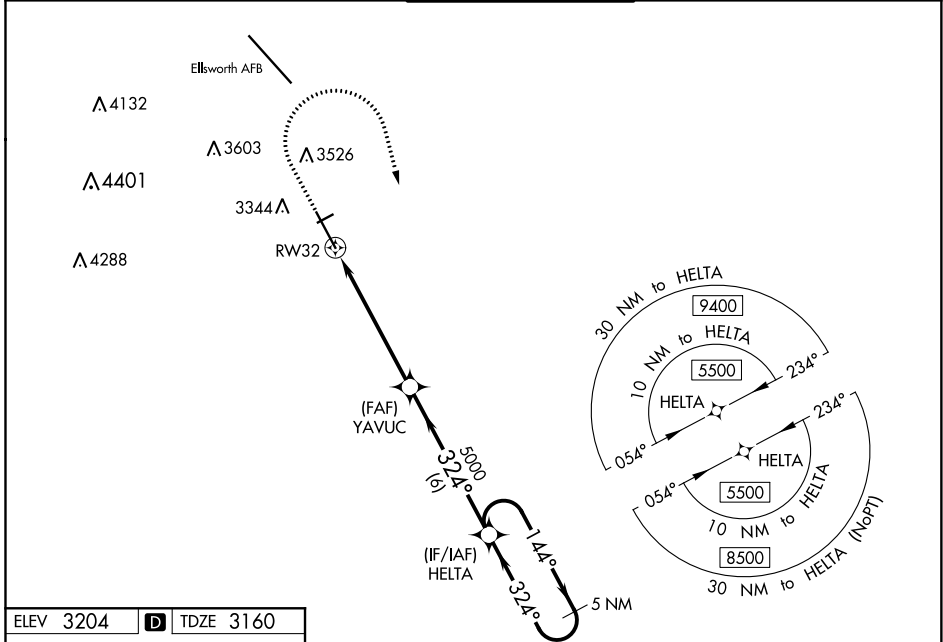
**⚠** For uncompensated Baro-VNAV systems, LNAV/VNAV NA below -24°C (-11°F) or above 51°C (125°F). DME/DME RNP-0.3 NA. For inop ALS, increase LPV Cat E visibility to RVR 4000, LNAV/VNAV all Cats to RVR 4500 and LNAV Cat E to 1 3/8 SM. # RVR 1800 authorized with use of FD or AP or HUD to DA.

MALSR

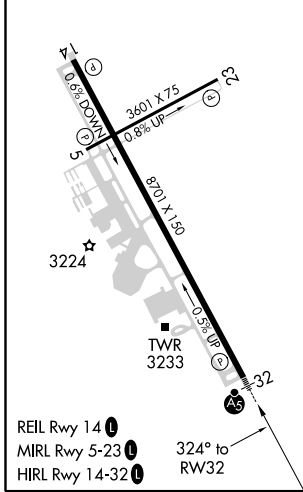


**MISSED APPROACH:** Climb to 3700 then climbing right turn to 5500 direct HELTA and hold.

ASOS <b>118.525</b>	ELLSWORTH APP CON * <b>119.5 259.1</b>	RAPID CITY TOWER * <b>125.85 (CTAF) 0 257.8</b>	GND CON <b>121.9</b>	UNICOM <b>122.95</b>
------------------------	---	--	-------------------------	-------------------------



ELEV 3204	<b>D</b>	TDZE 3160
-----------	----------	-----------



3700	5500	HELTA			
↑	↷	✧			
* LNAV only			HELTA 5 NM Holding Pattern		
* 1.3 NM to RW32			YAVUC 5000	144°	5500
↖			↖ 324°	← 324°	
↖ 1.3 NM			↖ 4.4 NM	↖ 6 NM	
CATEGORY	A	B	C	D	E
LPV DA#	3360/24		200 (200-1/2)		
LNAV/VNAV DA	3410/24		250 (300-1/2)		
LNAV MDA	3620/24		3620/45		460 (500-7/8)
CIRCLING	3660-1	3840-1	3860-1 3/4	3940-2 1/4	3960-2 3/4
	456 (500-1)	636 (700-1)	656 (700-1 3/4)	736 (800-2 1/4)	756 (800-2 3/4)
GP 3.00° TCH 54					

NC-1, 09 SEP 2021 to 07 OCT 2021

NC-1, 09 SEP 2021 to 07 OCT 2021